

**EAST AYRSHIRE COUNCIL****CABINET MEETING – 4 DECEMBER 2019****Report by Depute Chief Executive, Safer Communities**

---

**SUBJECT: EAST AYRSHIRE LEISURE AUDIT AND COMMUNITY CONSULTATION**

---

**PURPOSE OF REPORT**

1. The purpose of this report is to present to Cabinet an audit of leisure facilities across East Ayrshire and to seek approval for a programme of community consultation and engagement that will inform a Leisure Facility Plan.

**RECOMMENDATIONS**

2. **It is recommended that Cabinet:-**
  - (i) **approve the programme of community consultation and engagement; and**
  - (ii) **otherwise, to note the contents of the report.**

**BACKGROUND**

3. East Ayrshire Leisure has been working with colleagues in East Ayrshire Council's Transformation, Vibrant Communities and Facility and Property Management teams to carry out an audit of all leisure facilities available to communities across East Ayrshire (Appendix 1). This has been done on a community by community basis.
4. The audit has identified facilities under the following headings:
  - Parks and community open spaces
  - Paths
  - Schools
  - East Ayrshire Leisure Managed Facilities
  - Community Led Facilities
  - Privately Run Facilities
  - Other issues opportunities
5. One of our strategic themes that East Ayrshire Leisure will focus on over the 10 year period of our Strategic Document is to continue to provide high quality leisure facilities that are relevant and modern. However, we also have made a commitment to support other leisure providers in ensuring that leisure is truly

at the heart of every community regardless of who the provider is. In order to achieve this theme we will:

- Work with community, local authority and private providers to develop a Leisure Facility Plan that identifies all leisure provision throughout East Ayrshire and maximises the opportunities for our communities to participate in leisure activity
- Engage with partners to develop funding opportunities for refurbishment and development of leisure facilities regardless of who the provider is.

## COMMUNITY CONSULTATION AND ENGAGEMENT PROGRAMME

6. To ensure that leisure is truly at the heart of every community, it is essential that communities, stakeholders and partners are given the opportunity to feed into the Leisure Facility Plan. The Facility Audit will form the basis of this consultation and engagement and the following questions have been developed to ensure feedback can be given in a meaningful way that links directly to the 6 key themes within the East Ayrshire Leisure Strategic Vision. It should be noted that these questions will be tailored for each community and for each consultation mechanism to allow consultation at both local and local authority wide level.
- a. We have carried out an audit of the leisure facilities in each community across East Ayrshire regardless of who manages them. These facilities are listed in the consultation document. From your local knowledge, have we missed anything?
  - b. East Ayrshire Leisure strives to be an organisation that is widely recognised as a leisure provider that is firmly committed to listening. How do you think we could better **Share Our Vision** to ensure that leisure facilities and services meet the needs of our communities, visitors and partners?
  - c. Whilst East Ayrshire Leisure will continue to develop and provide high quality leisure facilities that are relevant and modern, we also aim to support other providers in ensuring that **Leisure is at the Heart of Every Community** regardless of who the provider is. How do you think we could ensure that our facilities meet the needs of the community, whilst avoiding duplication and competition?
  - d. Our vision is to “focus on continuous improvement to deliver inclusive, sustainable and accessible services that enable our communities and visitors to **Live their Best Life**” This is about how we can contribute to improving the enjoyment, quality of life, health and wellbeing of communities and visitors to East Ayrshire through an innovative, welcoming and ambitious programme of cultural, sport and outdoor activities. What type of leisure events, activities and programmes would

you like here in East Ayrshire and what do you think East Ayrshire Leisure's role should be in organising them?

- e. **Investing in our People and Embracing our Values** is fundamental in ensuring that our employees and volunteers are fully engaged in the operation and development of our organisation. What opportunities do you think there might be for volunteers, work placements and apprenticeships in the development of leisure services and facilities and how do you think we could add value to their experience?
- f. In order for future investment in leisure facilities, we need to focus the next few years on **Creating a Solid Foundation for Growth**. We are looking at embracing digital technology, developing collaborative approaches to services that are offered and exploring commercial opportunities. What activities do you think we should be focus on?
- g. We are an organisation that is committed to **Protecting our Environment** and we will monitor and evaluate what we do through an annual Climate Change Declaration. What measures do you think we could adopt to ensure our facilities and services are sustainable and environmentally efficient?

7. The following programme is being proposed:

Nov/Dec 2019	Development of Digital Consultation Package in partnership with East Ayrshire Council Transformation Team that will allow consultation community by community
Nov/Dec 2019	In partnership with East Ayrshire Council Vibrant Communities, identify key groups for targeted engagement. Groups to include specific sport and cultural interest groups, community action plan steering groups, residents' panel and other community representatives and groups
Nov/Dec 2019	Development of a 'Community Roadshow' that include community engagement and consultation workshops
Jan/Feb 2020	Undertake community and staff consultation and engagement
March 2020	Prepare a consultation and engagement report
Summer 2020	Present the draft Leisure Facility Plan to East Ayrshire Leisure
Summer 2020	Present the draft Leisure Facility Plan to East Ayrshire Council for approval

## LEGAL/RISK IMPLICATIONS

7. None arising directly from this report

**POLICY/HR/EQUALITY/FINANCIAL IMPLICATIONS**

8. None arising directly from this report. The community consultation and engagement programme will inform the development of a Leisure Facility Plan which will be presented to East Ayrshire cabinet in September 2020.

**COMMUNITY PLANNING/TRANSFORMATION IMPLICATIONS**

9. The aim of the Facility Audit is to engage local communities and stakeholders in the development of leisure facilities and services to ensure that they meet the needs of local people and visitors, therefore contributing to wellbeing and economic development.

**CONCLUSIONS**

10. The Leisure Facility Audit will for the first time provide a comprehensive overview of leisure provision in the area, regardless of who the provider is. Community consultation and engagement will allow for the development of a Strategy which ensures leisure activities meet the needs of the community, reduces duplication and competition and is innovative in service and facility design.

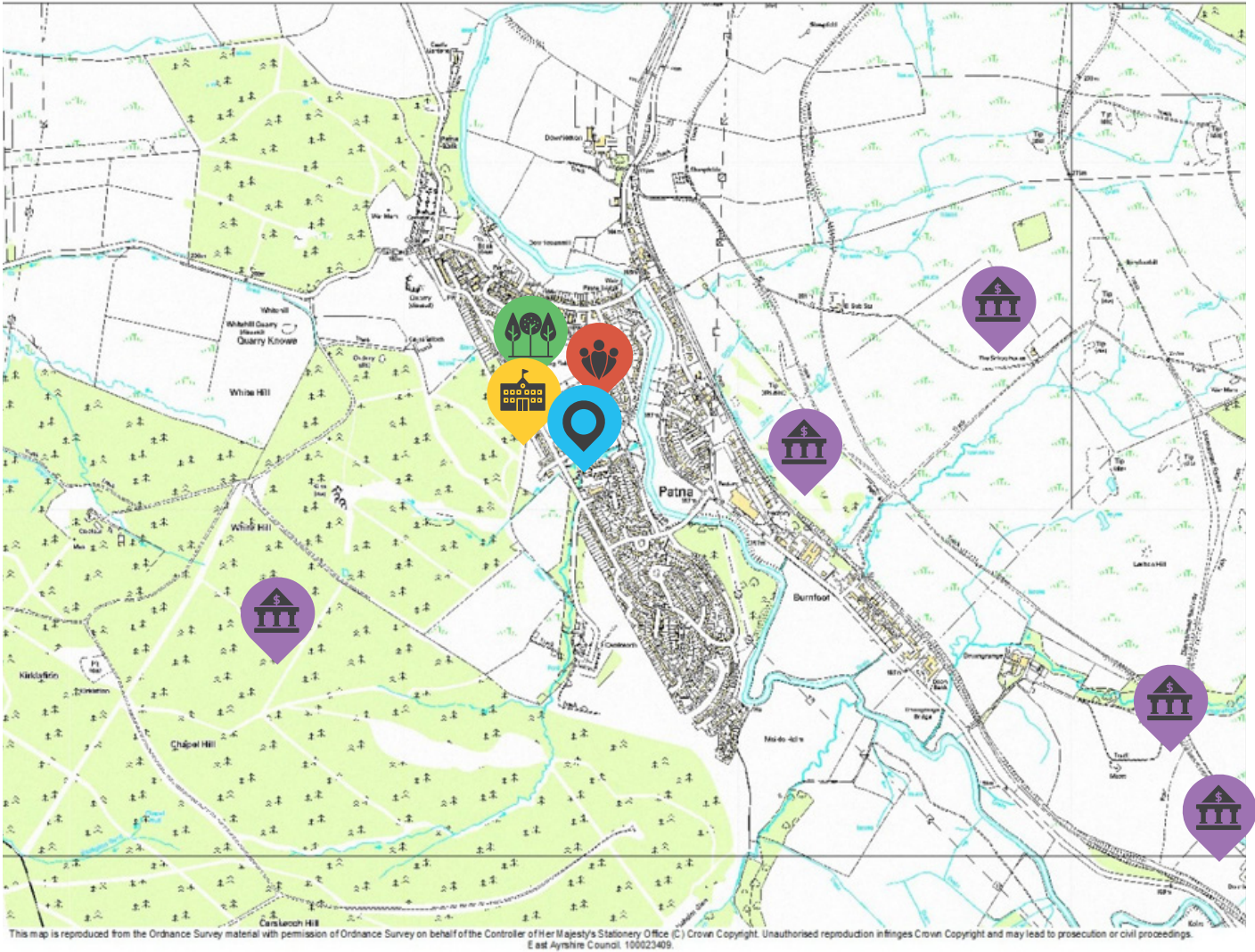
**Background Papers:** Settlement Leisure Audits 2019

**Person to Contact:** Anneke Freel, Chief Officer, East Ayrshire Leisure  
Tel: 01563 554720  
Email: [anneke.freel@eastayrshireleisure.com](mailto:anneke.freel@eastayrshireleisure.com)

**Implementation Officer:** Anneke Freel, Chief Officer, East Ayrshire Leisure  
Tel: 01563 554720  
Email: [anneke.freel@eastayrshireleisure.com](mailto:anneke.freel@eastayrshireleisure.com)

AF/RMcC  
3 November 2019

# FACILITY AUDIT



## PATNA

## MANAGED PARKS AND OPENSACES



The dominant feature in terms of open space would be the green corridor which runs along the River Doon spanning a large area; this space covers the semi-natural river corridor but also has more maintained section which feeds into the town centre and which forms an attractive green wedge within the settlement. The only other notable space would be the large sports pitch and playing fields which are situated adjacent to the school and residential area, other than these spaces are resigned to being grass sections in housing estates or strips along the roadside.

## SCHOOLS



**Patna Primary and St Xavier Primary Schools** are on a shared campus. The campus is also shared with the library and a community gym. Whilst community use of the schools is minimal and lets out with core school hours is predominantly for school activities, the gym hall is managed out with school hours by Patna Community Association.

## EAST AYRSHIRE LEISURE FACILITIES



**Patna Library** is a full time facility open from Tuesday to Saturday. It is based in a shared campus with the local schools, community centre and a community run gym. There are various workshops and clubs that are run from the library including Book bug, Craft Club, Lego Club and digi-classes

## COMMUNITY LED FACILITIES



**Dunaskin Heritage Centre** sits on the outskirts of the village. It is a visitor and heritage centre managed and operated by the Scottish Industrial Railway Heritage Group. The centre is opened on advertised days from May until August. The centre has a small café, a museum and offers short rides on a brake van hauled by a steam locomotive.

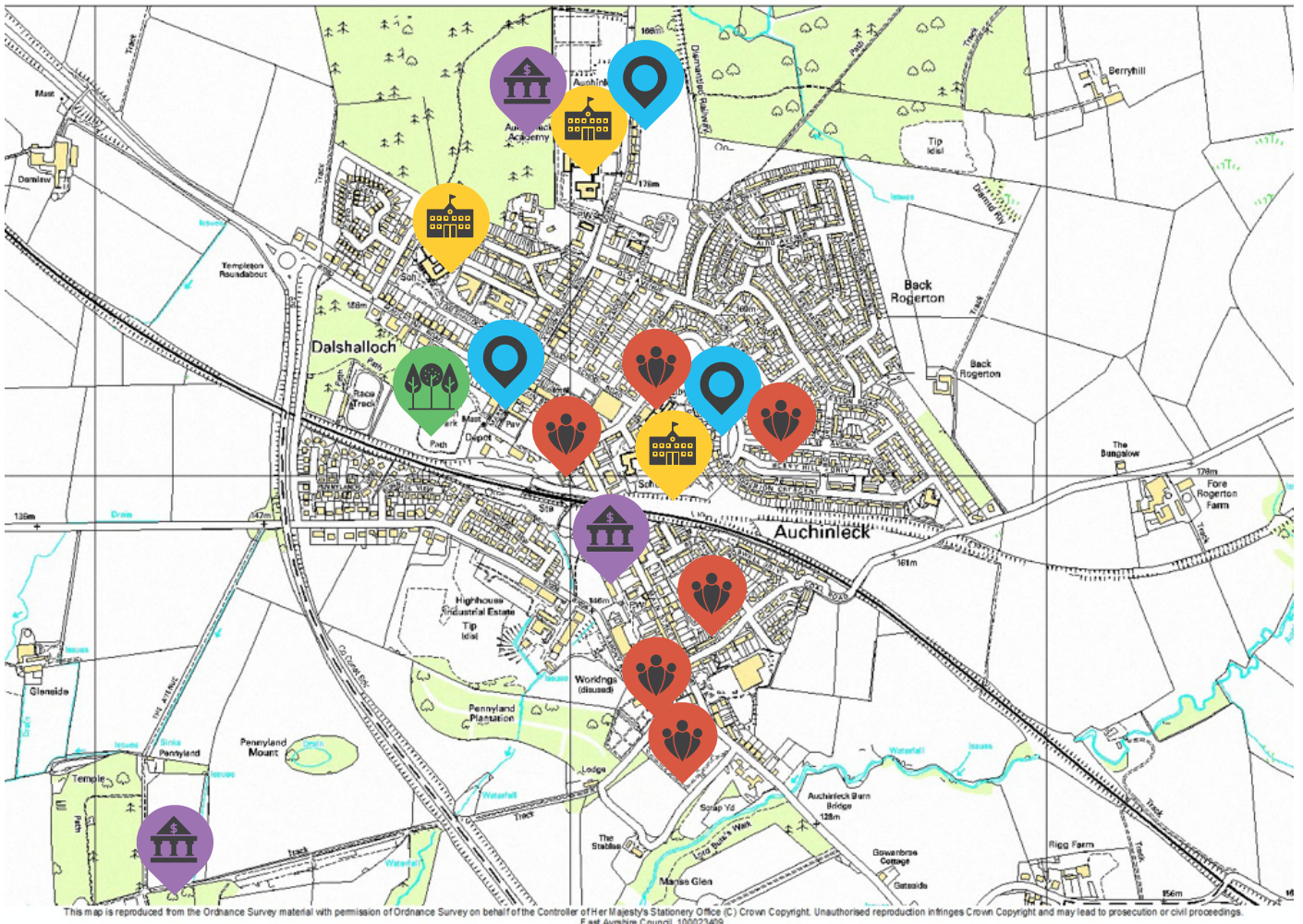
**Patna Community Centre and Patna Primary School gym hall** are managed by Patna Community Association who co-ordinates lets for community events and programmes including regular digital engagement and employability courses.

## PRIVATELY RUN FACILITIES



Within the shared school campus, there is a small gym with a range of cardiovascular and strengthening equipment. This is operated as a private members gym.

# FACILITY AUDIT



## AUCHINLECK

## MANAGED PARKS AND OPENSACES



Whilst Auchinleck has access to large areas of natural greenspaces along its boundary and according to the 2015 openspace audit has a surplus of openspaces in relation to its population, it only has 1 managed recreational or amenity openspace. This is Merlin Park which includes a grass football pitch and playpark.

## SCHOOLS



Auchinleck currently has 1 secondary school and 2 primary schools; Auchinleck Academy, Auchinleck Primary School and St. Patrick's Primary School. The schools in Auchinleck are predominantly used out with school hours for school events only including parent council meetings, parents' evenings, school shows and prizegivings as well as school fundraising events. They are not used for other community activities.

## EAST AYRSHIRE LEISURE FACILITIES



East Ayrshire Leisure manages 3 facilities in Auchinleck:

1. **Auchinleck Leisure Centre** is within the Auchinleck Academy campus and is available for community use from 5.30pm until 9.30pm, Monday to Friday and from 9am until 5pm on a Saturday and Sunday. It is recognised as a Community Sports Hub under the SportsScotland National Community Sports Hubs Initiative. The venue offers a 20m swimming pool, a 3 court sports hall, a gym hall and a synthetic grass pitch. Auchinleck Leisure Centre is used by 15 different sports clubs, community groups and local organisations including Auchinleck Talbot junior Football Club, Cumnock Dolphins Swimming Club and Doon Valley Sub-Aqua Club.

2. **Auchinleck Boswell Resource Centre** is home to Auchinleck Library and Community Community Centre. The community centre has a range of rooms and halls available to hire which are suitable for meetings, events, presentations and a variety of leisure classes. The Main Hall can accommodate 150 people and is ideal for hosting large-scale events. It has a music surround system, projector and a 5m x 4m screen available for use and retractable seating if for a cinema screening/show. The Lesser Hall can accommodate 50 people and is fully equipped with an adjoining kitchen which can also be used if required. There is a partition into the lesser hall which can be removed to provide additional space if needed. There is a further 2 two multi-purpose rooms which can accommodate 20 people. Auchinleck Library offers a range of reader development events and activities for all ages, as well as safe computer use, internet and free wifi access, printing services and DVD hire.

3. **Auchinleck Community Development Initiative** are based in the Auchinleck Boswell Resource Centre. Merlin Park Grass Football Pitches and Pavilion includes 2 full size grass pitches. The pavilion is purpose built and has changing facilities for 4 teams with separate rooms for match officials.

## COMMUNITY LED FACILITIES



**Beechwood Park** is the home to Auchinleck Talbot Junior Football Club. The Beechwood Regeneration Committee was formed in 2013 to oversee and continually explore opportunities for upgrade and development. The stadium was refurbished in 2017 and now has a capacity of 4000, catering facilities and a shop.

**Auchinleck Outdoor Bowling Club** is a private members club. However, it has a refurbished main hall that is available for private functions including weddings and birthday parties. The Club organises a programme of community events and activities.

**Auchinleck Indoor Bowling Club** has 7 bowling rinks within an indoor stadium that was opened in 1980. The building is owned by East Ayrshire Council and leased to the Club. The Club hosts national and international championships. The facilities within the stadium include a function suite suitable for private parties, meetings, sports classes and other community events. It has a capacity of 80. It also has a café which is open to the public between 10am and 3pm, Monday to Friday and 10am to 7pm on Saturdays and Sundays. Lunches are served between 12 noon and 2pm daily. The café includes a bar which is open most evenings.

The Boswell Trust was formed in 2010 to promote the heritage, literacy arts and education and to specifically restore **James Boswell's Mausoleum in Auchinleck** churchyard and to create a visitor attraction in the adjoining 17th century Boswell Aisle. The heritage of James Boswell attracts visitors from all over the world.

**The Knowe Garden Centre** has been developed and is managed by Auchinleck Community Development Initiative. It is a community led activity which organises gardening events and workshops throughout the year and provides gardening services for people in the community. Any profits from the garden services are reinvested into the garden centre and community activities.

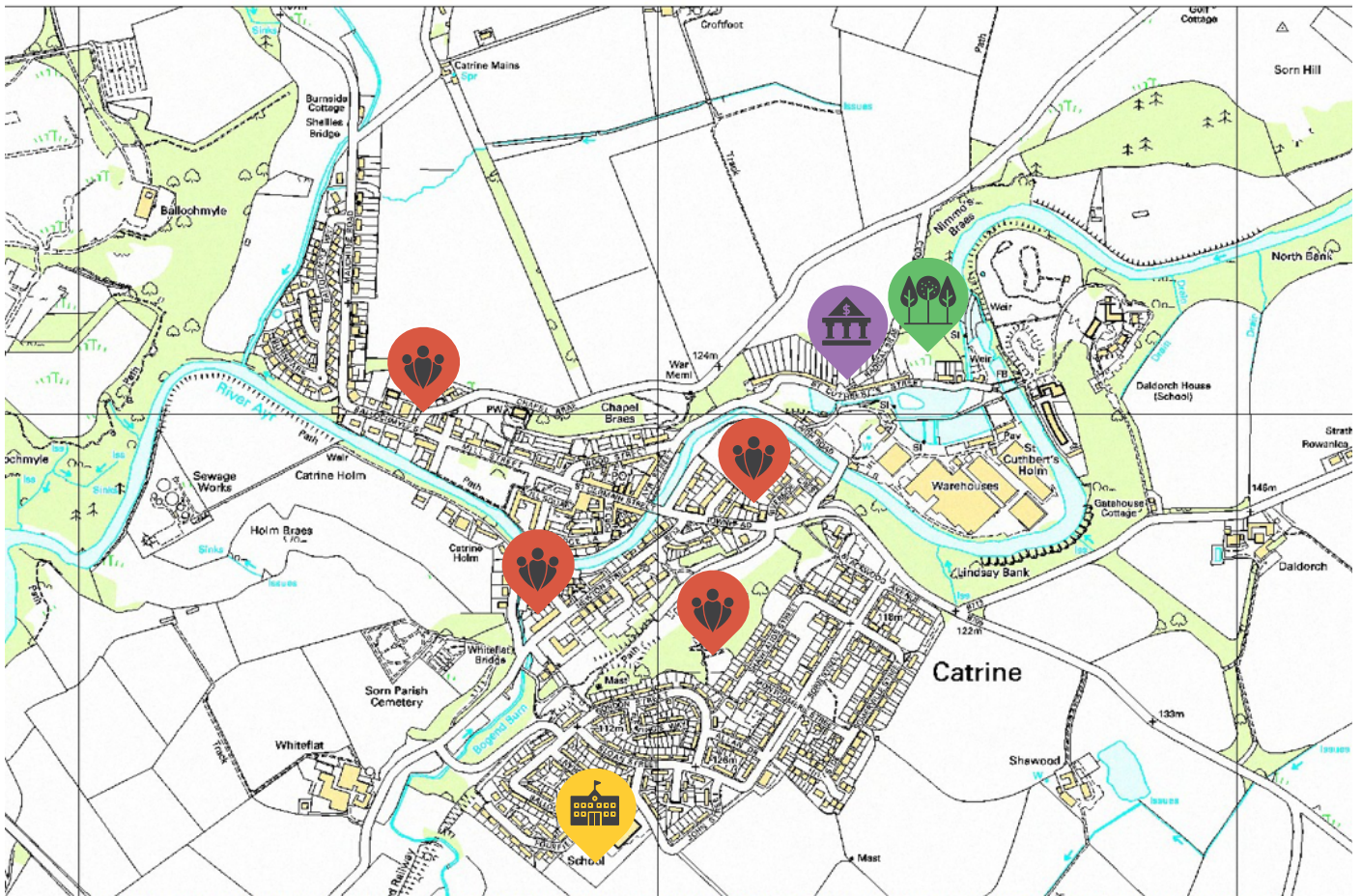
## PRIVATELY RUN FACILITIES



**Dumfries House and Estate** sits on the outskirts of Auchinleck. It is one of Britain's finest stately homes, set amidst 2000 acres of woodland, parkland and designed landscapes. The Estate provides a range of walks, outdoor learning and volunteering opportunities, playparks and gardens, a gift shop and restaurant, as well as regular tours of the house and its collections.

**Shapeshifters Fitness Studio** is a private member only centre which offers a wide range of fitness classes and nutritional advice seminars for all ages and abilities.

# FACILITY AUDIT



## CATRINE

## MANAGED PARKS AND OPENSACES



In relation to population size, just over 10 hectares of useable, public open space is deemed appropriate for Catrine. The actual existing open space figure is just under 23 hectares resulting in a surplus in terms of quantity of openspace. However, these open spaces are dispersed throughout the town with no distinct pattern and predominantly adjacent to the B705 and the River Ayr.

**Catrine Voes Local Nature Reserve** is the only Local Nature Reserve in East Ayrshire and lies at the northern edge of the settlement with ponds and mature landscape features. It includes Chapelbraes Community Woodland that has a series of local paths.

## SCHOOLS



**Catrine Primary School and Early Childhood Centre** is the only school within Catrine. Out with school hours, it is used predominantly for school activities including parents' nights, parent council meetings and school fundraising events. It is not used for wider community use.

## EAST AYRSHIRE LEISURE FACILITIES



**The River Ayr Way** is Scotland's first Source to Sea medium to long distance routes. It is included in the national family of 'Scotland's Great Trails and is used by over 120,000 people each year who either do the route in its entirety or explore individual sections of the route. The River Ayr Way goes through the middle of Catrine.

## COMMUNITY LED FACILITIES

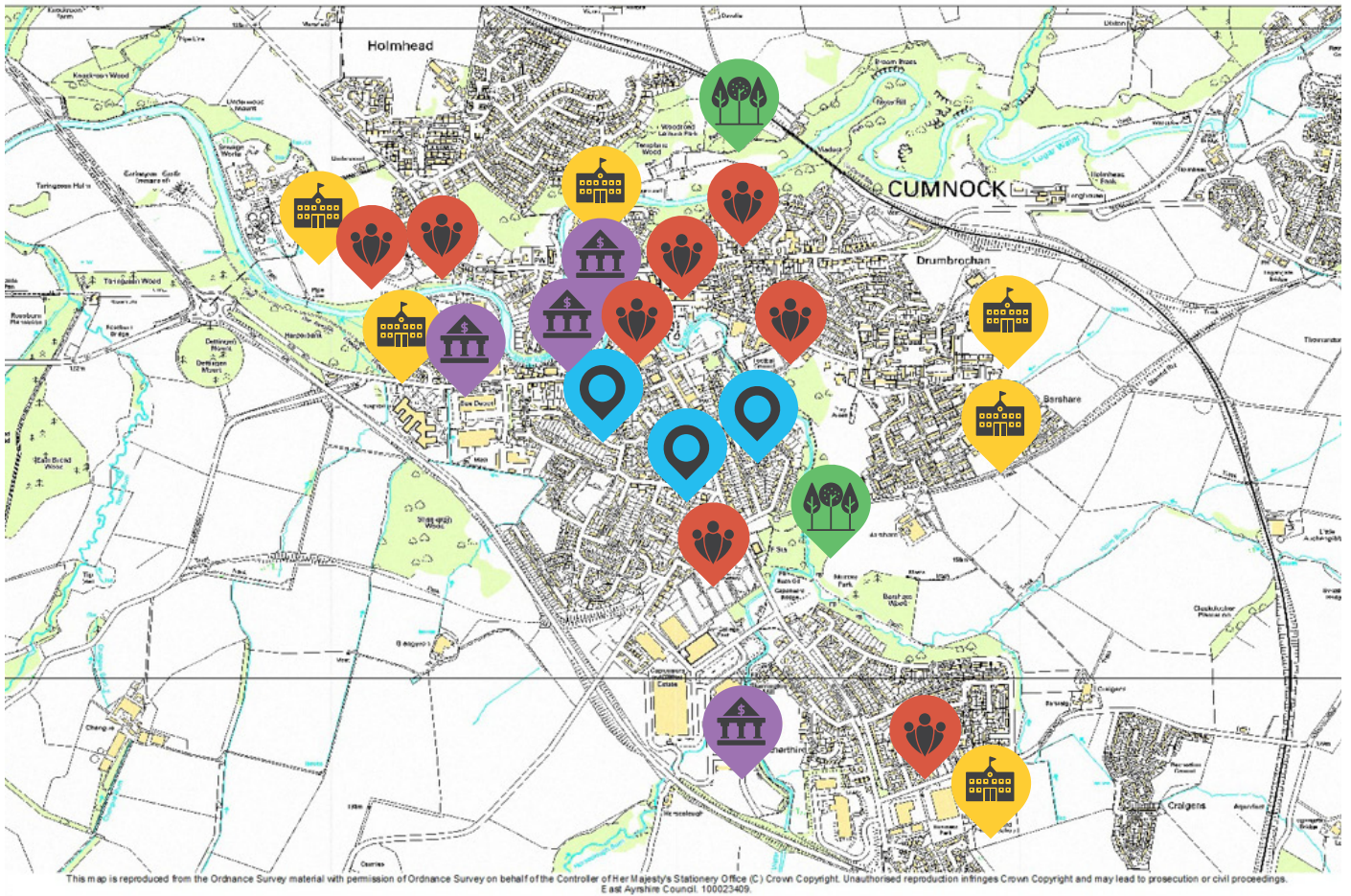


Catrine Community Trust manages several facilities in the village that offer leisure opportunities for the community. The **AM Institute** is in the heart of Catrine and is used regularly for community events and activities. It has a large main hall, a smaller hall and full kitchen facilities.

The Trust also took on responsibility for **Catrine Games Hall** through a Community Asset Transfer. The games hall is open from 2pm until 9pm weekdays and from 10am until 5pm at weekends. It has a 2 court games hall, a squash court and a gym. The games hall offers a range of activities including badminton coaching and children's activities.

The **playing fields in Catrine** are also managed by Catrine Community Trust. Regular football games and coaching activities take place on the grass pitches.

# FACILITY AUDIT



## CUMNOCK

## MANAGED PARKS AND OPENSACES



Four open spaces within Cumnock form green corners to the settlement at **Shankston Wood, Glaisnock / Holm Burn** and the open spaces associated with the **Lugar Water**. The river corridors are large spaces, which offer varied functions and usage, providing valuable green networks and walking routes with varied landscape elements and habitats. Some smaller neighbourhood open spaces exist within the settlement, these are mostly play parks and sports pitches.

The proportion of open space within Cumnock is high and well distributed throughout the town. There is a surplus of open space in Cumnock in terms of the population requirements.

**Woodroad Park** is the main public park in Cumnock with a network of walking routes, a play park and other facilities for leisure.

## SCHOOLS



The Barony Campus in Cumnock is scheduled to open in 2020. The new Campus will incorporate:

- **Barshare Primary School, Supported Learning Centre and Early Childhood Centre**
- **Greenmill Primary School and Early Childhood Centre**
- **Hillside ASN School**
- **Auchinleck Academy**
- **Cumnock Academy and Supported Learning Centre**

The Barony will be an inclusive learning environment where state-of-the-art facilities are provided for its children, young people and members of the community. A further focus on health and wellbeing will ensure this commitment extends to the outdoor facilities and these will provide enhanced leisure and recreational facilities for all members of the community. The facilities include extensive sports hall provision, a dance studio, a 500 seat auditorium, music and art studios, a community café and a hydrotherapy pool.

## EAST AYRSHIRE LEISURE FACILITIES



**Cumnock Library** sits within Rothesay House which is a shared facility with East Ayrshire Council and includes local offices, the marriage suite and rooms that are available for meetings. The library is open from Tuesday to Saturday. It has a computer suite and free public wifi and offers a range of regular activities including Bookbug sessions and a weekly Chit Chat group.

**Cumnock Town Hall** was designed by Robert Ingram and built in 1883/4. This beautiful town hall has undergone extensive restoration to restore it to its former glory using traditional materials whilst incorporating updated facilities. The refurbished hall is now an arts and entertainment venue for shows, music, comedy clubs and more. It is also available to hire for weddings, parties, shows and meetings at any time. It has a large main hall with a capacity of 260 downstairs and a smaller hall upstairs which will hold 80 people. Both Halls have a small kitchen area for use by anyone hiring the venue. There is also a small meeting room downstairs. The venue is open from Wednesday to Saturday from 10am until 5pm, but can be hired out with these times by arrangement.

Cumnock Town Hall is a 4 star visitor attraction within the VisitScotland Accreditation Scheme.

## EAST AYRSHIRE LEISURE FACILITIES



**The Baird Institute** lies in the centre of the town of Cumnock and was opened in March 1891 to provide leisure facilities for local people and included a museum, billiard room and reading rooms. Nowadays, it holds collections of Mauchline Ware of world importance which are complimented by many items of Cumnock Pottery and a wide range of resources which relate to the history of Cumnock and the Doon Valley area. It holds museum collections, archives, photographs, audio visual materials, books, maps and newspapers. One room is also dedicated to James Keir Hardie, founder of the Labour Party and contains many of his personal belongings.

The Museum hosts a programme of contemporary art exhibitions and a range of events and workshops which take place throughout the year. It is a part time museum which is open Thursday, Friday and Saturday.

## COMMUNITY LED FACILITIES



**Visions Leisure Centre** is a state of the art leisure facility which offers a wide variety of leisure activities to suit all ages and fitness levels. Through the well-equipped cardio and strengthening gym, there are gym instructors who provide gym inductions and tailored fitness programmes. Visions also has a 25m, 4 lane swimming pool, sauna, steam room and spa bath. Group and individual swimming lessons and Rookie Lifeguard training is offered at Visions. The pool is also used regularly by Cumnock Academy as part of the PE Curriculum.

Visions also offers extensive range of fitness classes suited to all fitness levels including circuit training, zumba and aquafit. 17 classes are offered Monday to Friday each week. There is a range of 11 membership packages on offer including class only, family, teen, corporate and joint memberships

**Netherthird Community Centre** was a community asset transfer and is managed by a group of volunteers. It has a community gym (N-Fit Gym) which is open 7 days a week and includes a range of cardio and strengthening equipment. It also has a function room and meeting room which are available to hire, with regular lets from a range of community groups and organisations

**Cumnock Juniors football Club** has a newly renovated Social Club within their grounds which is available for private functions including weddings, birthday parties and fundraisers. It has a fully equipped kitchen to facilitate catering at any event.

**Cumnock Rugby Club** has their Clubhouse situated at Broomfield. The function room is an excellent facility to host a range of different events from christenings to weddings to retirement parties. The Clubhouse also has a gym which is stocked with Scottish rugby Union Approved Equipment for rugby focused Strength and Conditioning sessions for players.

**The Heart and Soul Hub** is a community facility in Cumnock run by Centrestage. It provides a range of activities with a focus on 'Arts at the Heart'. Activities include cooking, singing, and a programme for young people. The centre is open Monday to Friday with a late night every Thursday.

## PRIVATELY RUN FACILITIES

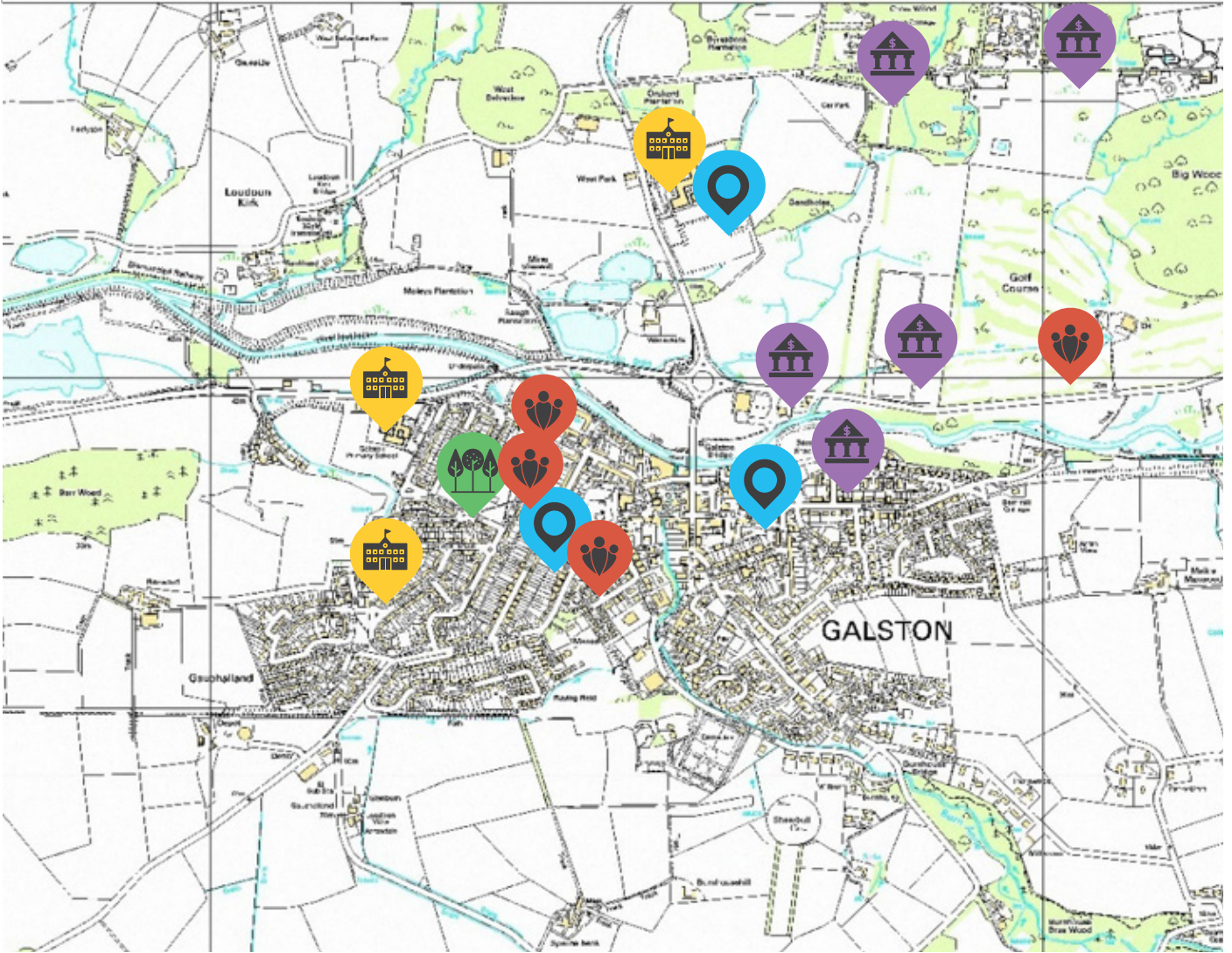


**The Dynamics Sports Gym** is strength and conditioning gym open daily from 6am until midnight

**J's Fitness Personal Training** offers personal training and fitness classes for all levels of fitness. They currently offer 92 classes a month morning and night. They offer 2 membership packages.

**The Fitness Box** provides a fully equipped gym and a range of fitness classes, sauna, personal training, sauna, boxing facilities and sunbed. They offer an adult and a junior membership.

# FACILITY AUDIT



# GALSTON

## MANAGED PARKS AND OPENSACES



The recommended useable public open space provision for Galston is 26 hectares. The actual openspace provision is just over 32 hectares. Large areas of open space are situated around the periphery of the settlement with none in the town centre these include some areas of semi-natural open space, sports pitches and grass verges along transport corridors.

The presence of the River Irvine on the northern boundary of the town offers informal path links from some of the existing open space along the river and to Loudoun Castle area. The quantity of open space within Galston has been increased by the inclusion of Cessnock Woodland. This is an important natural greenspace site in the area which provides opportunities for the biodiversity and recreation.

An additional two large open spaces are located out with the settlement boundary and consist of woodlands and river corridors including the Big Wood and Barr Wood plantations. Loudoun Castle Garden and Designed Landscape is located to the north west of Galston and is made up of policy woodland with walking routes.

As part of the Irvine Valley, the community of Galston have access to a 40 mile path network in and around the towns and villages. A very successful walking festival is held every year.

## SCHOOLS



There are 3 schools in Galston; **Galston Primary School and Early Education Centre, St. Sophia's Primary School and Early Education Centre and Loudoun Academy**. Outwith core hours, the primary schools are predominantly used for school activities including parent council meetings, school shows and parents nights. They are not used for community bookings. However, outwith core hours Loudoun Academy becomes Loudoun Leisure Centre and is managed by East Ayrshire Leisure.

## EAST AYRSHIRE LEISURE FACILITIES



Located within the **Loudoun Academy Campus**, the leisure centre's facilities are open in the evening and weekends. The fitness suite has a range of cardiovascular equipment, free weights and resistance machines as well as a programme of fitness classes.

There are a number of indoor areas available for hire including a 3 court sports hall and a gym hall, plus a floodlit 3G Synthetic Grass Pitch. The Centre has a 20m swimming pool and offers public swimming sessions, family fun swims, swimming lessons and more. The floodlit 3G synthetic grass pitch can be used for a kick about with friends, local team training or competitive matches.

**Galston Library** is a full time library which is open Tuesday to Sunday. The library also offers safe computer use, internet and free Wi-Fi access plus DVD hire, printing facilities and access to eBooks and e- magazines. A range of activities are offered at the library including digi-classes, Craft Club and drop in Bookbug sessions.

**Galston Community Centre** was refurbished as part of a £1m regeneration investment in 2015 and is now a fully accessible Centre with a range of facilities for the community. It is managed through agreement with Galston Community Association.

The main hall is a popular venue for weddings and medium scale events which can accommodate up to 100 people seated comfortably with access to kitchen facilities and a bar. It has a meeting room downstairs which can accommodate up to 20 people and two smaller rooms upstairs suitable for meetings or training sessions for up to 20 people. There are a number of different activities held within the Centre every week including mother and toddler groups, ballroom dancing, bingo and birthday parties.

## COMMUNITY LED FACILITIES



Galston Community Development Trust have secured over £1million for the restoration of the former **Portland Arms Hotel**. The community facilities include a large community room for events and activities. They currently have an after school club and a range of children's activities operating from 9am – 5pm, Monday to Friday.

**Portland Park** is the home ground of Galston United and Galston Boys Club

Galston Community Association manages **Galston Community Centre** through a management agreement as outlined above.

**Loudoun Gowf Club** is a community run, 18 hole private membership golf club. The Club offers season tickets, 'pay as you play' golf, coaching opportunities and it also has a pro golf shop.

## PRIVATELY RUN FACILITIES

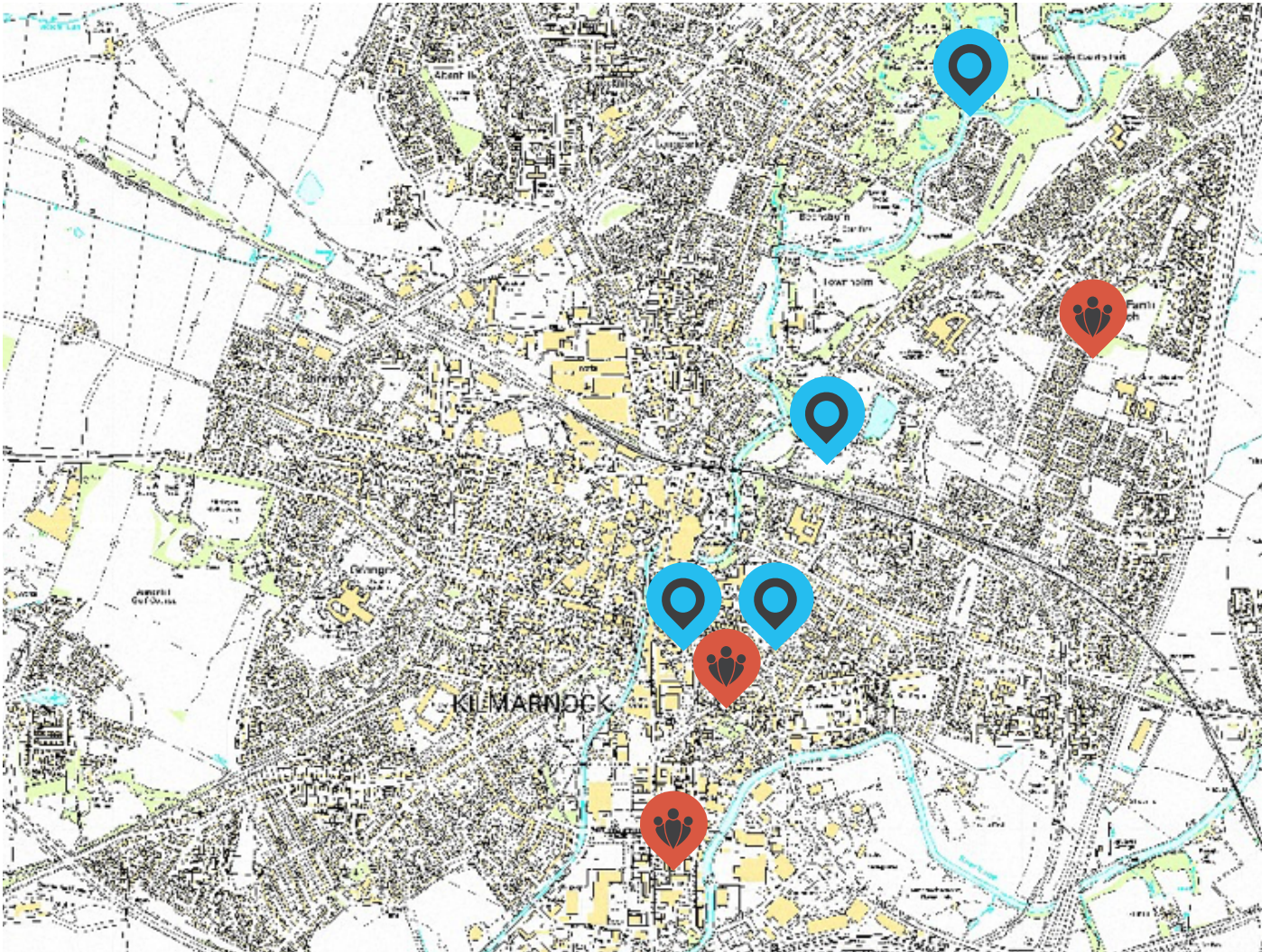


**Engage Fitness** is a personal fitness centre offering instructor led workout sessions at specific times on a Monday to Saturday.

**Loudoun Mains Country Club** on the outskirts of Galston has 2 gyms, a sauna and a swimming pool. The club offers swimming lessons for babies from 6 weeks old and graded swimming for 3-12 year olds. They also offer one to one coaching for adults. Loudoun Mains is a private members club.

**Loudoun Sports Centre** is in the location formally operated as a driving range. This facility is now operated by Scottish Assault Courses which is a national company operating out of 3 locations across Scotland but based in Kilmarnock. They offer assault course, paintball, airsoft, a shooting range and zorb football. They provide tailor made packages for schools, corporate days out and fundraising. They also have a private members gym. The facilities are open from 9am – 5pm, Monday to Sunday.

# FACILITY AUDIT



## KILMARNOCK - CULTURE

## EAST AYRSHIRE LEISURE FACILITIES



**Dean Castle** was the home and stronghold of the Boyd family for over 400 years. The Keep, dating to around 1350 houses outstanding displays that tell the story of the Boyd family and medieval life, as well as East Ayrshire's stunning collection of arms and armour.

The 15th century Palace was spectacularly rebuilt from ruins by the 8th Lord Howard de Walden in the 1930s. The result is a sensitive restoration in keeping with the interior design of the 16th and 17th centuries and even re-using original 17th century fixtures and fittings taken from Balfour House, Fife. This building tells the stories of the Howard de Walden family and showcases an internationally significant collection of medieval musical instruments

Opened in 1901, the **Dick Institute** is a 4 star attraction, attracting over 120,000 visitors each year. It houses the largest museum and gallery spaces in Ayrshire and East Ayrshire's central library. A recent refurbishment and the addition of a cafe has breathed new life into this stunning building ensuring it will continue to be enjoyed by a new generation of visitors.

It features a programme of nationally important exhibitions, permanent displays of the museum's diverse collections and innovative work by contemporary artists, film makers and young people from the area. It has been described by the Glasgow Herald as 'Scotland's finest municipal gallery' through hosting an ambitious range of temporary exhibitions and is regularly the only Scottish venue for significant shows.

Previous major exhibitions at the Dick Institute have included Quentin Blake, Wallace and Gromit, Bill Viola, Michael Morpurgo: A Lifetime in Stories, Robert Colquhoun, Abram Games, Pop Art in Print and Gerhard Richter, often in partnership with national institutions including the V&A, National Galleries Scotland and TATE Modern. Many of Scotland's leading contemporary artists including Christine Borland, Dalziel and Scullion, Nathan Coley, Rachel MacLean and Graham Fagan have been shown through creative commissioning programmes that support artistic talent by linking with major national initiatives.

The South Museum and Loom Room feature stories of the local and social history of the area, whilst the North Museum contains objects from our natural history sciences and archaeology collections. A separate Young People's Gallery is a dedicated space programmed for, and by, young people in East Ayrshire.

The lending library, housed on the ground floor, offers a vast range of resources as well as regular Bookbug sessions for youngsters, Little Explorer groups, adult and children's book groups, digi-classes, art classes, meet the author events and literary festivals.

The Dick Institute is open Tuesday – Saturday every week.

**The Burns Monument Centre** is a venue shared by East Ayrshire Leisure, East Ayrshire Council and Ayrshire Archives. The local and family history collections at the Centre are cared for by East Ayrshire Leisure. The collection includes items such as newspapers, maps, historic photographs, books and many other local and family history resources.

**The Palace Theatre** was originally opened as a corn exchange in 1863 and was converted to a theatre in 1903. Together with the Grand Hall, the Palace Theatre dominates a huge corner plot in the heart of the Town, The Palace boasts a 500 seat theatre and has a varied programme of events and shows on all year round. The Grand Hall, as well as hosting a number of large scale music events, can also be used for conferences, meetings and wedding receptions.

## COMMUNITY LED FACILITIES



**Centrestage Communities Ltd** is a leading charity in the field of the arts. The company's objects are (a) The advancement of the arts, heritage and culture, to provide aspirational, artistic and inclusive opportunities for anyone, regardless of age, background or experience; (b) The advancement of education; (c) The provision of recreational facilities and the organisation of recreational activities, to improve the conditions of life for the persons for whom the facilities or activities are primarily intended; (d) The relief of those in need by reason of age, ill-health, disability, financial hardship or other disadvantage. They are currently based in a purposely designed 'production house' facility in Kilmarnock that allows for the development of performing arts activities and shows. The facility also has a café which is open to the public.

In February 2019, Centrestage officially took responsibility of the former Kilmarnock Academy site, which was the largest asset transfer in Scotland to date.

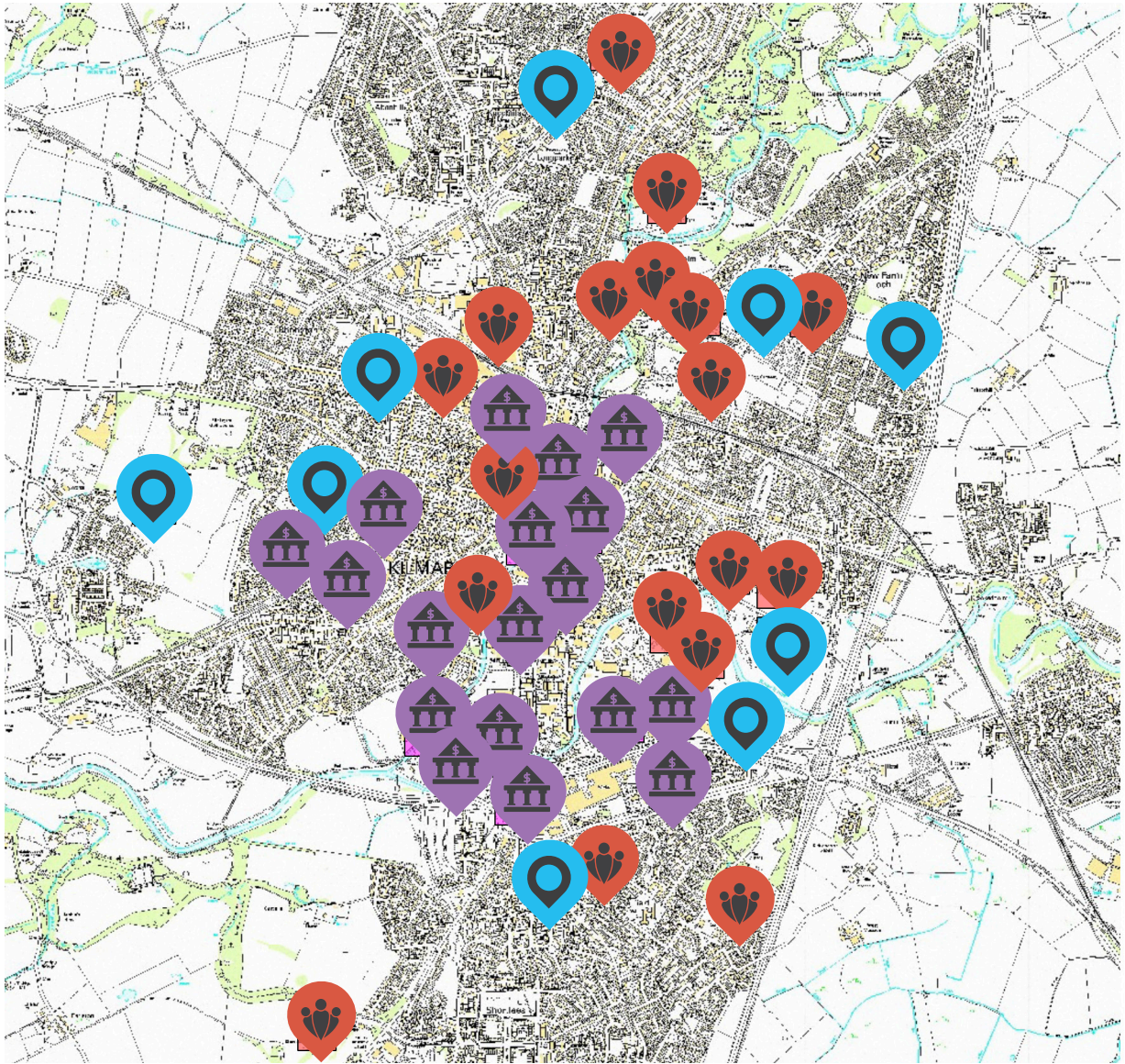
The historic landmark has formed part of the Towns skyline since 1898. The transfer to the Kilmarnock Village will allow Centrestage to continue to deliver their vision of 'building energetic and inclusive communities with the arts at the heart.' Not only will '**Centrestage Village**' become the new home of Centrestage, it will also allow their activities to grow and develop and to explore new opportunities for collaboration.

---

**Take a Bow** is a Kilmarnock based musical theatre and dance company for 2-16 year olds. Their aim is to introduce children to musical theatre with singing, dancing and acting through weekly term time classes leading to full scale productions on a fully professional working stage.

Take a Bow recently took over responsibility for the **New Farm Loch Community Centre** and have developed it as an 'Opportunity Centre' for community and performing arts engagement. They offer classes 3 nights a week from their new centre. The Centre is also available for community lets and provides function facilities across 2 storeys supporting by a full catering kitchen.

# FACILITY AUDIT



## KILMARNOCK - SPORT

## EAST AYRSHIRE LEISURE FACILITIES



**Grange Leisure Centre** provides community access to the Grange Academy Campus out with school hours. The centre is recognised as one of the Community Sports Hubs as part of the SportScotland National Initiative. The venue offers an 8 court sports hall, 2 gymnasiums, a small dance studio and a floodlit 3G synthetic grass pitch. The assembly hall and classrooms are also available to hire out with school hours.

Similarly, **St Joseph's Leisure Centre** provides community access to St. Joseph's Academy Campus when the facilities are not in use by the schools and is also recognised as a Community Sports Hub. The venue has a 4 court sports hall, 2 gymnasiums, a small drama studio and a 3G synthetic grass pitch. The assembly hall and classrooms are also available to hire out with school hours. St Joseph's Leisure Centre has been developed as a 'Club Hub' that focuses on regular use by particular sports clubs and organisations.

The newest sporting shared facility that is managed by East Ayrshire Leisure is the **William McIlvanney Leisure Centre**. The Centre is part of the William McIlvanney Campus and is open for community use in the evenings and at weekends. It is the only school facility with a fitness suite. The fitness suite has a range of cardiovascular and resistance equipment, as well as free weights. A gym instructor is on site to offer advice and guidance and tailored fitness programmes. The centre has a dance studio where a range of fitness classes are offered. William McIlvanney Leisure Centre also has 4, 3 and 2 court sports halls, 3G Synthetic Pitches and a grass football pitch.

**Hunter Fitness Centre** is included within the North West Area Centre. It has a 3 court badminton hall which is also used for fitness classes, birthday parties and various coaching sessions. The Centre also has a fitness suite with a selection of cardiovascular equipment, free weights and resistance machines.

**Ayrshire Athletics Arena** is a certified UKA Grade 1 outdoor athletics facility which is home to the Kilmarnock Harriers and regularly hosts the West District Championships. It also includes a 6 lane, 63m indoor running track with jump pits, throw nets and facilities for indoor cricket. The facility has a strength and conditioning suite, a general purpose meeting room and physiotherapy rooms. All of the facilities are available for hire for individual use, group training sessions and events.

**Annanhill Golf Course** is an 18-hole course situated on the outskirts of Kilmarnock is open to residents and visitors alike. Set in the scenic surroundings of Annanhill Estate, the 5954 yard parkland course has a par of 71. New to Annanhill, state of the art golf boards are available for hire. Annanhill is one of only 2 courses in Scotland to offer golf boards for hire. In 2019, a programme of 'golf camps' and golf pro sessions were introduced at Annanhill.

East Ayrshire leisure manages the bookings for a number of grass football pitches including **Scott Ellis Playing Fields, Riccarton** and **Bonnyton** grass pitches. Changing pavilions are available as part of the hire at Scott Ellis and Riccarton. Scott Ellis is also used regularly for large scale outdoor events.

## COMMUNITY LED FACILITIES



**Caprington Golf Course and Clubhouse** was transferred as part of a Community Asset Transfer in 2015 and is now known as Caprington Community Golf Club. The club offers an 18 hole parkland course. The club offers a range of youth programmes and events, as well as regular golf tournaments. Caprington also offers a separate 18 hole foot golf course.

**Kilmarnock Rugby Football Club** was founded in 1868 and is one of the oldest rugby union clubs in Scotland. They have played from the pitches and clubhouse at Bellsland in Kilmarnock for nearly 50 years. The club has 12 teams ranging from 8 year olds to adults. As well as their normal coaching programming, the club operates a Rugby Summer Camp each year. The Clubhouse has a function suite that is available for private parties or events. Kilmarnock rugby Football Club has been successful in raising funds for new changing facilities supported by Scottish Rugby Union, SportsScotland and East Ayrshire Council.

**Bonnyton Thistle Football Club** was founded in 1912 and has teams for 5 year olds to adults. They have 4 girls' teams and a support disability sport. The team manage 2 facilities in Kilmarnock. They opened the Bonnyton Thistle FC Community Football Development Centre in 2017 at Townholm. The Centre has a full sized synthetic grass pitch, a clubhouse and a community space. Bonnyton Thistle has also taken on responsibility for a 5 side synthetic grass pitch and clubhouse at Bonnyton in Kilmarnock.

**Dean Thistle Football Club** has responsibility for the grass pitches and pavilions at Dean Park in Kilmarnock. The club was formed in 1993 to develop child and youth football and has teams ranging from 3 year-olds playing with the mini-kickers through to the Under-16 team. They also have a very successful girls section. Arrangements are in place to open up the club to five other local teams who play on the grass pitches and there is also a partnership with local schools and the local sports hub.

**Kilmarnock Tennis Club**, formed in 1936, is situated near the centre of town and has four all-weather, floodlit synthetic grass courts. The club welcomes members of all ages and abilities. Social tennis is encouraged on Friday nights from 7pm, Saturdays from 2.30pm onwards and Sunday from 2pm. Saturday social play is immediately after Saturday adult coaching 1pm-2.30pm. Members and non-members are welcome to attend Saturday coaching

**Kilmarnock Cricket Club** is based at the Scott Ellis Playing Fields at New Mill Road. The facilities were upgraded in 2013 and include a square, running track, an artificial wicket and top of the range practice facilities. The Club also use the Ayrshire Athletics Arena for indoor training sessions.

The new Ayrshire College in the centre of the town has a variety of sport and fitness facilities that are available for both student and public use. The college facilities include a state of the art multi purpose sports hall, fitness centre and dance studio. In addition to these indoor facilities the college has a floodlit multi use sports pitch that is available for hire in the evening.

**The Galleon Leisure Centre** opened in 1987, replacing the Kilmarnock Baths on Titchfield Street. It is open 7 days a week from 6.30am until 10pm. The centre includes a 25m swimming pool with public swim times, group and individual swimming lessons and is the base for Kilmarnock Amateur Swimming Club and Kilmarnock Jets. It also has regular fun swim sessions. The centre also includes an ice rink, bowling hall, 4 court sports hall, squash courts, sauna and steam room and a large fitness room with a range of cardiovascular and strengthening equipment. The centre has a café, a function suite and a crèche. The Galleon offers over 70 fitness classes each week which are available to members and non-members. There are 10 different membership packages offered at the Galleon.

**Above Adventure** is an outdoor activity charity which has taken on responsibility for the Grange Church based on Woodstock Street. Working with East Ayrshire Council, they have secured funding to transform the church into a state of the art climbing centre. The first phase of the project is scheduled to open in 2020 with the full facility being complete by 2021.

## COMMUNITY LED FACILITIES



**Cluarankwai Judo Club (Kilmarnock)** is one of the oldest clubs in Scotland having formed in 1949. The Club moved to a new Dojo facility at New Mill Road in 2007. The Club has the largest purpose built Dojo in Scotland and some of the best facilities in the UK. The dojo is used for national and local events throughout the year and its facilities are used by other sports for training and seminars. There is a double mat area with seating, two large changing areas for women and men and a gymnasium for cardio and strength training. Although primarily a judo club, the facilities provide ideal training conditions for other sports including Gymnastic & Yoga classes.

There are 8 private member bowling clubs across Kilmarnock. Each Club has a function suite that is suitable for private hire.

## PRIVATELY RUN FACILITIES



**Personal Training Ayrshire** is a fitness centre based in Titchfield Street. They offer training sessions for small groups, including nutritional advice and personal coaching. They also offer group metabolic training and one to one training.

**WG2 Gym** is a unique Fitness & Martial Arts Educational facility that welcomes all ages. They offer a range of activities and facilities including a weights gym, fitness area, cross training, free & machine weights, cardio, diet advice, lean body programs, fitness programs, personal training, martial arts studio, boxing ring and strike zone. The gym is open 7 days a week from 9am until 10pm, offering a range of martial art and boxing classes. They also offer various membership packages as well as 'pay as you train'.

**Curves Kilmarnock** is based in Low Glencairn Street. It is an international company which offers 30 minute full body workouts, one to one coaching and nutritional advice. Their programme is aimed at women only. The centre is open 6 days a week. Appointments are booked on line.

**Underground Fitness** is a family run gym offering one-to-one, two-to-one and group personal training sessions. They have a range of equipment including lifting platforms, squat racks, cardio machines, resistance machines, and free weights. They also have a functional training area. They offer 7 different UFIT classes which are high intensity full body workouts. As well as classes, they offer a 60 minute weekly strength camp. The Underground Fitness offers 4 different memberships and 'Pay as you Go'.

**Crossfit BIA** is based in Loreny Industrial Estate. It is a private members gym that is open 7 days a week with equipment for building muscle strength and fitness.

**Fitness4her** is a woman only fitness centre in Douglas Street. It is open 7 days a week from 6am. It has a gym and aerobics studio and offers personal training, nutritional advice and weekly classes.

**True Fitness** is based in High Glencairn Street. They offer personal training plans which include one to one sessions, activity programmes to carry out on your own, nutritional plans and lifestyle advice. They also offer fitness classes and small group personal training sessions. They have 3 different membership packages.

**Soccerworld Kilmarnock** is an outdoor 5 a side football centre which features 6, 5 a side synthetic grass pitches, 2, 7 a side synthetic grass pitches, a sports bar, a function hall and a party room. All facilities are available to hire. Soccerworld also offers children's coaching sessions for 3 -12 year olds on a Wednesday, Friday and Saturday and school holiday soccer camps.

## PRIVATELY RUN FACILITIES



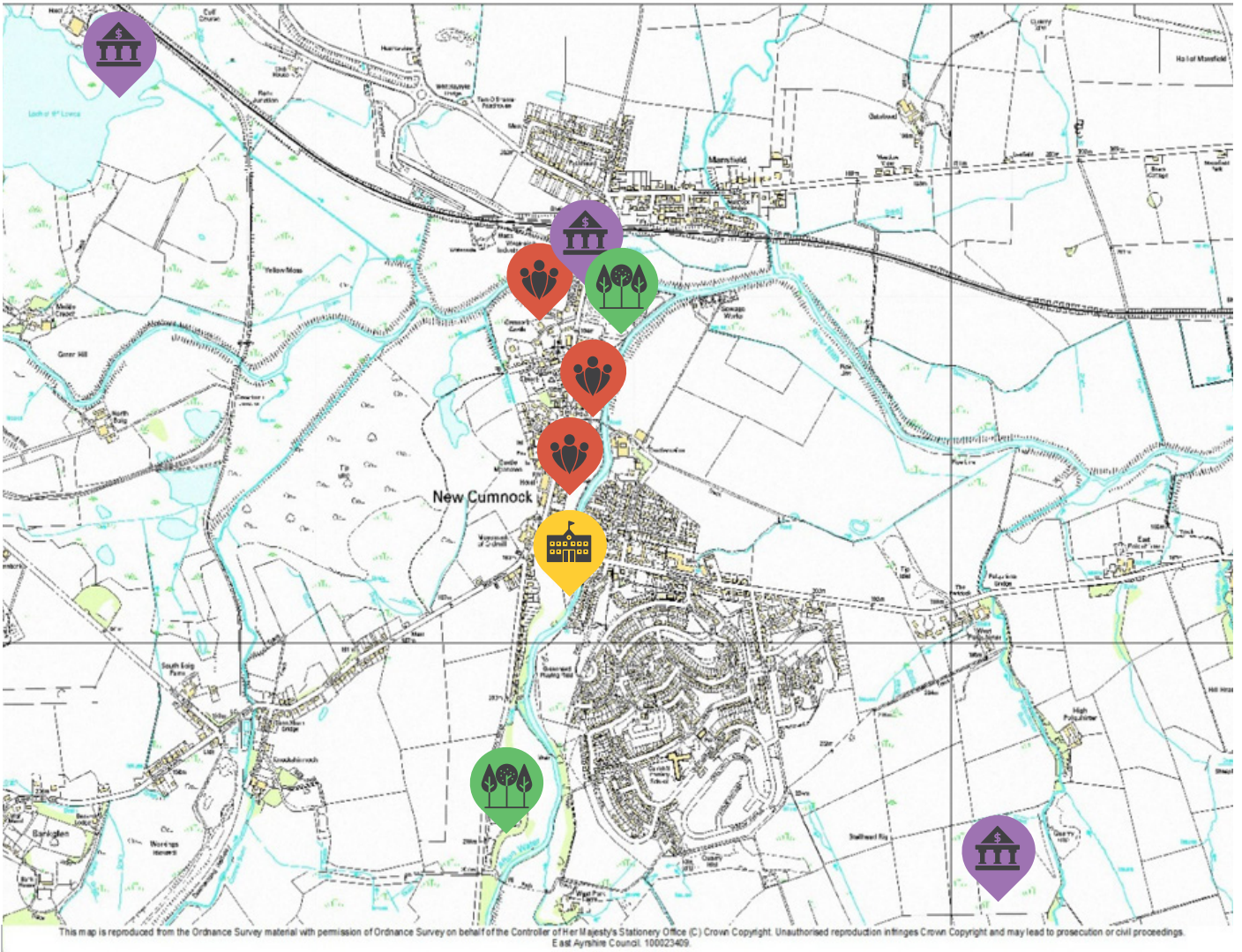
**The Gym Group** is based in Queens Drive Industrial Estate. It is open 24 hours a day, 7 days a week. It has an extensive gym with a range of cardiovascular and strengthening equipment. It also has over 40 group fitness classes each week. They have 2 different memberships and also offer a day pass rate.

**APEX Strength Training** is a fitness centre based at West Netherton Street and open 5 days a week from 6.30am until 9pm. They offer personal training sessions using a range of strengthening equipment.

**The Garage** is a leisure facility which offers ten pin bowling and go karting. It also has a function suite which holds up to 150 people and is suitable for a range of private parties.

**Lycans Martial Arts Academy** is a Brazilian Jiu Jitsu and boxing academy based at Holmquarry Road. The Academy offers classes 6 days a week as well as private tuition and training.

# FACILITY AUDIT



# NEW CUMNOCK

## MANAGED PARKS AND OPENSACES



There are two upland river valleys that intersect within New Cumnock, the Afton Water is a steep sided valley that runs from the Southern Uplands and the River Nith is a meandering river within the flatter topography. There are several former mining and industrial sites around New Cumnock the largest of these is the Knockshinnoch site on the western edge of the town. This area has been reclaimed as lagoons and wildlife reserve with new woodland planting and wetland areas. The area has a high recreational value and is used by walkers.

There are large areas of Natural/Semi Natural Open Space that abut the settlement and provide a valuable resource for recreation.

## SCHOOLS



**New Cumnock Primary** and **New Cumnock Early Childhood Centre** are at the heart of the village. However, they are not used for the community use out with core school hours. Use of the facilities out with core hours is predominantly for school activities including parents' evenings, school shows and parent council meetings.

## EAST AYRSHIRE LEISURE FACILITIES



East Ayrshire Leisure no longer has any venues in New Cumnock. However, the village is visited by the mobile library

## COMMUNITY LED FACILITIES



**New Cumnock Town Hall** was restored by the Princes Trust. It is a multi-functional facility managed by Dumfries House and is open 7 days a week from 9am until 10pm. It is available for a range of community events and activities.

**New Cumnock Swimming Pool** (The Tamar Manoukian Pool) was also refurbished by Dumfries House and opened in 2017 and is now managed by Glen Afton Leisure. The pool is open throughout the year with a range of daily public swim times and activity classes. The group offer a range of programmes including individual and group swimming lessons and lifeguard courses.

**Glenafton Athletic** were formed in 1930 and played on a colliery owned pitch in the heart of the miners' rows at Connel Park, a mile or so to the west of the village. The club relocated to the purpose built Loch Park in 1960. The Hunter Pavilion is open on match days and has a licenced bar, a function room and a catering kitchen.