

EAST AYRSHIRE**COMMUNITY PLANNING PARTNERSHIP BOARD****11 MARCH 2021****LOCAL OUTCOMES IMPROVEMENT PLAN 2021-24****Report by the Chief Executive, East Ayrshire Council****PURPOSE OF REPORT**

1. The purpose of the report is to present for Community Planning Partnership Board consideration and approval the draft Local Outcomes Improvement Plan (LOIP) for 2021-24.

BACKGROUND

2. The Community Empowerment (Scotland) Act 2015 requires all CPPs to prepare and publish a Local Outcomes Improvement Plan (LOIP) which sets out the local outcomes which the CPP will prioritise for improvement. The LOIP requires to:
 - Demonstrate our understanding of local needs, circumstances and aspirations;
 - Link this understanding to the key, high level priority outcomes that we are working in partnership to achieve, setting this in the context of the National Outcomes
 - Set out the agreed performance measures that will allow us to demonstrate our ambitions for our local communities and our impact in meeting these ambitions.
3. Our Local Outcomes Improvement Plan is an essential part of community planning in East Ayrshire, setting out the performance management framework which allows us to account publicly to our communities for the difference that we are making through community planning and the work that we are doing together to tackle inequalities. Our existing LOIP was developed for the period 2018-2021 and through the Community Plan review we have set out to develop a new LOIP for the next three year period, 2021-24.

LOCAL OUTCOMES IMPROVEMENT PLAN

4. At their meeting of 26 January 2021, Executive Officers' Group Members endorsed proposals for the development for a new LOIP which would focus on a concise set of high level outcomes, reflecting stakeholder feedback received during the engagement phase of the Community Plan review, better reflecting the inter-relatedness of the economic, safer communities and wellbeing agendas and the desire for a more streamlined, outcome focused approach to performance reporting.
5. The new streamlined LOIP which is presented at Appendix 1 of this report contains a concise set of high level outcome indicators that aims to better capture the collective work that is being taken forward across our partnership, rather than being divided up thematically. It is anticipated that this approach will allow for more detailed analysis of our performance in relation to our key priorities and will better reflect the wider, cross cutting contribution of each partner.

6. The performance indicators set out within the draft LOIP will provide the basis of our annual performance reporting on the progress that we are making as a community planning partnership to improve local outcomes. In line with the statutory guidance on LOIP development, it contains some indicators against which we can expect to see short-medium term progress, over the next three years, and others, such as life expectancy, which we can more realistically hope to influence over the lifetime of the current Community Plan, which runs to 2030.
7. Another key change in this revised LOIP is the inclusion, against each individual indicator, of some more detailed analysis of the particular challenges facing community planning partners in relation to performance and in particular the inequalities which exist across our communities. By highlighting the variances which exist across East Ayrshire, either by locality or population grouping, we hope to ensure that our future activity is focused where it is most needed in terms of tackling inequality and supporting those in greatest need.
8. It should be noted that some of the indicators in the attached remain under development, with for example additional consideration being given to how best to capture our partnership ambitions in relation to sustainability and the environment, and how best to capture education and attainment outcomes for our children and young people. These are in the process of being finalised, in consultation with partners.
9. The new LOIP is presented as part of a wider refresh of our approach to data, within which the LOIP represents the highest level of strategic performance reporting on the areas that we aim as a partnership to improve. The LOIP will be supported by a more comprehensive evidence base which is being developed to cover all aspects of living and working in East Ayrshire, and in particular our work to tackle inequalities.
10. This will include detailed area profile information relevant to our high level outcomes which will be regularly reviewed and updated to allow us to meaningfully track and analyse available data on living and working in East Ayrshire. This analysis will be shared across our CPP and wider communities, with the aim of delivering a substantial increase in the quantity and quality of information available to partners, allowing us to make better collective decisions, informed about the complex current, emerging and interrelated challenges and opportunities faced by our communities, at both East Ayrshire and locality levels.
11. Members of the CPP Board are now invited to consider and approve in principle the new LOIP 2021-24 which is presented at Appendix 1 of this report, and to remit officers to finalise the document for publication and wider public consultation from 1 April 2021.

NEXT STEPS

12. We have reported separately on the consultation and engagement activity that has informed the development of our new priorities for 2021-24, however under the Community Empowerment legislation, specific consultation activity also requires to be undertaken in relation to any new LOIP developed, in addition to the broader duty to secure the participation of the community beforehand in informing the CPPs understanding of local needs and aspirations, and which outcomes should be prioritised.

13. It is intended that the extension of the Community Plan Review into the first months of the new financial year will allow a further meaningful period of consultation and engagement with our communities and wider stakeholders in relation to the new LOIP, in line with these statutory requirements. Realistically, this consultation will still largely be undertaken through virtual means, however we will work closely with colleagues in the Council's Vibrant Communities Service to engage creatively with our community council and community led action plan networks and to maximise the reach of this consultation programme across our wider communities, and existing stakeholder forums, including, importantly, the Children and Young People's Cabinet.
14. This additional engagement activity is of particular importance as the new LOIP and related performance arrangements represent a significant change to the existing arrangements. It is therefore intended that a development session with members of the CPP Board Members and Elected Members of East Ayrshire Council will also be scheduled, which will allow for more detailed discussion of our new performance framework and how this will support Members to continue to meaningfully scrutinise performance and hold partners to account.
15. Subject to CPP Board approval, the new LOIP will be published on 1 April 2021, for a final extended period of consultation and review with our communities and wider stakeholders. The outcome of the extended consultation and engagement period will be presented to the Executive Officers Group on 11 May 2021, along with any proposed refinements to the new LOIP, to allow it to be finalised for consideration and final endorsement by the CPP Board at its meeting of 10 June 2021, alongside the new thematic Delivery Plans and the final recommendations arising from the 2020/21 review of our Community Plan.

RECOMMENDATIONS

16. The Community Planning Partnership Board is requested to:
 - i) consider and approve in principle the draft Local Outcomes Improvement Plan 2021-24 presented at Appendix 1;
 - ii) endorse the wider proposed approach to data and performance management set out within this report;
 - iii) note the further consultation and engagement proposals set out at paragraphs 12-15 of the report;
 - iv) remit officers to finalise the LOIP for publication and a final extended period of consultation and engagement with our communities from 1 April 2021;
 - v) agree to receive the new Local Outcomes Improvement Plan 2021-24 for final endorsement at its meeting of 10 June 2021, alongside the new thematic Delivery Plans and any final recommendations arising from the 2020/21 review of our Community Plan; and
 - vi) otherwise, note the content of the report.

Eddie Fraser
Chief Executive
East Ayrshire Council
4 March 2021

LOCAL OUTCOMES IMPROVEMENT PLAN 2021-24

Introduction

East Ayrshire is a place with strong, safe, vibrant communities where everyone has a good quality of life and access to opportunities, chances and high quality services which are sustainable, accessible and meet people's needs.

East Ayrshire Community Plan is recognised by all Community Planning Partners as the sovereign strategic planning document for the delivery of public services across the local area. The Community Plan, which sits centrally within the Community Planning Framework, is our plan for place and sets out how we will work to realise our shared Vision for the area for the period from 2015 to 2030.

Our Community Plan is underpinned by three thematic **Delivery Plans** which set out the detail of the actions that will be taken forward by partners to achieve this shared vision.

Our Delivery Plans are developed for shorter, three yearly planning cycles. This allows us to ensure that these plans remain up-to-date and appropriate for delivering improvement on the key priorities which reflect current and emerging local needs.

The 2020/21 review of our Community Plan reaffirmed our shared commitment to our existing three themes and a thematic Delivery Plan has been developed for each theme, as a framework for our partnership activity in the three year period 2021-24.

Economy and Skills - Safer Communities – Wellbeing (*links to relevant DP*)

Alongside the Delivery Plans sits this **Local Outcomes Improvement Plan (LOIP)**, which sets out the performance management framework which allows us **to account publicly to our communities for community planning in East Ayrshire** and the work that we are doing together to tackle inequalities.

Through this LOIP we will

- Demonstrate our understanding of local needs, circumstances and aspirations;
- Link this understanding to the key, high level priority outcomes that we are working in partnership to achieve, setting this in the context of the National Outcomes
- Set out the agreed performance measures that will allow us to demonstrate our ambitions for our local communities and our impact in meeting these ambitions.

The second three yearly review of our Community Plan took place in 2020/21, within the challenging context of the Covid-19 pandemic, an emerging recovery and renewal

agenda and the uncertainty of the final UK withdrawal from the European Union. This background is reflected in this new LOIP, and in the associated Delivery Plans which have been developed to set the high level framework for the work of our partnership over the next three years, 2021-2024.

EAST AYRSHIRE – PEOPLE AND PLACE

East Ayrshire is a vibrant place to live, with a varied landscape and a range of towns and villages which are all characterised by a strong sense of community.

Insert infographics – settlements, population etc

Our people are our key assets and we benefit from high levels of community engagement and activism. For us, community planning is about working with our communities and supporting and empowering them to achieve the best possible outcomes.

Insert infographics – Community Led Actions Plans, other?

At a regional level we also work closely with our neighbouring authority areas, in particular North and South Ayrshire, to maximise opportunities for our local residents, through for example the Ayrshire Growth Deal and Caring for Ayrshire.

Infographics about AGD investment, other?

While many parts of East Ayrshire are prosperous, social, economic and health **inequalities** continue to exist within and between our communities.

Infographics – life expectancy variations, Caring for Ayrshire agenda etc.

The recent Covid-19 pandemic has exacerbated some of these challenges, and set back some areas of work where previously we were achieving good progress.

Infographics – covid impacts eg employment figs

Our strategic planning is informed by a suite of **local statistical profiles** which are regularly reviewed and updated to allow us to meaningfully track and analyse available data on living and working in East Ayrshire. In line with our commitment to better use of data, these profiles are currently being augmented into a more comprehensive set of analyses based on a much wider range of data and other evidence. They will encompass:

- a refresh of the current **East Ayrshire by Numbers** data profile;
- a renewed **East Ayrshire Area Report** and associated Locality and ward area reports;
- information contained within **strategic needs assessments**, such as those carried out by Health and Social Care Partnership and Housing colleagues;
- the **Children and Young People data compendium**;

- relevant **management information** that partners are able to share; and
- information from **engagement with communities**.

An important addition to our evidence base will be associated commentary and insight provided by the community planning partners, making sense of the data and highlighting areas of concern and areas of progress.

This represents a substantial increase in the quantity and quality of information available to us, allowing us to make better decisions, informed about the complex current, emerging and interrelated challenges and opportunities faced by our communities, at both East Ayrshire and locality levels.

The latest area profiles are available here *(link to be inserted)*

WORKING WITH AND FOR OUR COMMUNITIES

Community Planning

Effective participation by local people and communities is embedded in the Community Planning process in East Ayrshire, and strengthens our understanding of the distinctive needs of communities of place and interest, and of the importance of involving local people and communities in decisions which affect their lives.

Community Voices

The views of local people about the key priority areas to be addressed are identified through, but not exclusively limited to, the following:

- Community Led Action Plans, which set out the priorities for improving local communities as identified by the residents themselves;
- Rapid Residents Survey
- Vibrant Voices
- Ayrshire Shared Equality Outcomes Consultation
- East Ayrshire Wellbeing Conversation
- Police and Fire Consultations
- Tenants and Residents Federation Survey

Listening to local people adds to the body of statistical evidence that we hold as a partnership and helps us to make sense of it in a local context. Working together with our communities we can identify our shared challenges and also – most importantly – we can come up with local solutions that we can deliver together.

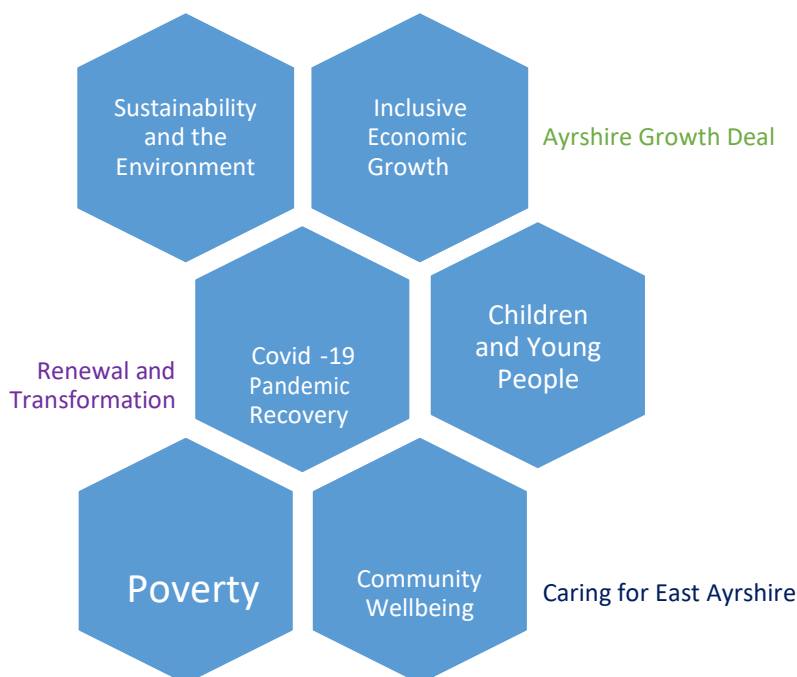
Understanding our Localities

Locality planning is fundamental to ensure that our work to address inequalities is targeted where it is most needed and that the aspirations identified in our Community Plan are delivered at local level right across our communities. The Community Led Action Plans developed by our local communities themselves provide the foundation of our locality planning approach in East Ayrshire, with ‘wrap around’ tailored public sector provision, based on a robust analysis of current and future need, within the most deprived 0-5% data zones.

Our multi-agency working is also co-ordinated on a geographical basis on the 3 boundaries adopted by the Integrated Health and Social Care Partnership, which ultimately align to consolidated Electoral Ward Boundaries: Northern, Kilmarnock and Southern localities.

IMPROVING LOCAL OUTCOMES 2021-2024

Through our 2020/21 review of our Community Plan, we asked our communities, partners and stakeholders about their priorities for the next three years. This is what they told us that they want us to focus on in partnership over the next three years:



(Note each tile will link to further narrative)

Each and every one of our community planning partners has its own clear role to play in driving forward these shared priorities and these are articulated in our new thematic Delivery Plans for 2021-24.

Our crosscutting themes of Alcohol and Drugs, Child Poverty, Equalities, Lifelong Learning, Youth Employment and Sustainability are all reflected within the headline priorities above and will continue to be driven forward in the work of our partnership.

This work will be underpinned by our shared underlying commitment to the principles of the **Community Empowerment (Scotland) Act 2015** (supporting our communities do more for themselves and have more say in the decisions that affect them) and **our Fairer Scotland Duty** (tackling poverty and building a fairer and more inclusive East Ayrshire).

We have identified a suite of high level priority outcomes which set out our shared ambitions for East Ayrshire in relation to these priorities for 2021-24 and a concise set of performance measures against which we will assess our future partnership performance.

OUR HIGH LEVEL PRIORITY OUTCOMES

'East Ayrshire is a place with strong, safe and vibrant communities where everyone has a good quality of life and access to opportunities, choices and high quality services which are sustainable, accessible and meet people's needs'

(NB the text below is based on the initial draft delivery plans and will be subject to final amendment/agreement by the relevant Strategic Leads/DP Working Groups)

Working together, we will seek to deliver sustained economic growth and build and retain wealth across all East Ayrshire communities. Our evidence suggests the greatest impact will be achieved by focusing on the following key priorities:

- Supporting the resilience and recovery of our business base and stimulating the development of existing and new businesses across the economy.
- Developing a highly skilled, qualified and resilient workforce to meet the needs of current and emerging demands and opportunities.
- Delivering quality infrastructure projects and leveraging further investment to accelerate economic recovery, support inclusive growth and transition to a low carbon economy.
- Supporting wider community-led regeneration by working with our communities and businesses to optimise how resources are used for their benefit.

Working together, we will seek to deliver improved community safety and to support our communities to be resilient, inclusive and empowered. Our evidence suggests the greatest impact will be achieved by focusing on the following key priorities:

- Ensuring East Ayrshire residents are safe and protected from crime and antisocial behaviour in their communities.
- Ensuring East Ayrshire residents are safe and supported in their homes and communities.
- Ensuring vulnerable people are safe and protected from harm.

Working together, we will seek to improve and sustain wellbeing, care and promote equity. Our evidence suggests the greatest impact will be achieved by focusing on the following key priorities:

- Ensuring children and young people, including those in early years, and their carers are supported to be active, healthy and reach their potential at all life stages
- Ensuring all residents are given the opportunity to improve their wellbeing, to lead an active, healthy life and to make positive lifestyle choices
- Ensuring older people and adults who require support and their carers are included and empowered to live the healthiest life possible
- Ensuring communities are supported to address the impact that inequalities has on the health and wellbeing of our residents

CPP BOARD STRATEGIC PRIORITIES

For each three year period, Members of East Ayrshire Council and the CPP Board also identify shared strategic priorities. These priorities are chosen to represent key, strategically important areas of activity for the partnership to progress, with the aim of a demonstrable positive impact on local outcomes for our communities.

The Ayrshire Growth Deal and the Caring for Ayrshire transformational change programme each have the potential to make a real difference in our communities, in relation both to our Covid-19 recovery and renewal activity and also in our wider, ongoing work to tackle poverty and inequality across our communities. Consequently these have been identified as our two shared strategic priorities for 2021-24.

These strategic priorities, together with our high level priority outcomes, are reflected in the new thematic Delivery Plans that have been developed for 2021-24, and in the performance indicators which follow.

LOCAL OUTCOMES IMPROVEMENT: MEASURES OF SUCCESS

We have identified a concise suite of high level performance indicators which we will use to measure the success of our partnership activity in relation to achieving our high level priority outcomes for people living and working in East Ayrshire, and tackling inequalities in the years ahead. The actions identified within our thematic Delivery Plans will drive improvement in relation to each of the indicators shown below and this will allow us to reflect the wide and cross cutting contribution of each of our partners to this shared improvement agenda in our future performance reporting. These indicators also align to the national performance framework, and these links are illustrated at Appendix 1.

These performance indicators will provide the basis of our annual performance reporting to our communities, which will be presented for consideration and endorsement by Members of East Ayrshire Community Planning Partnership Board and Elected Members of East Ayrshire Council annually in September each year.

Our performance reporting on these key performance indicators is supported by fuller and wider evidence base covering all aspects of living and working in East Ayrshire. As well as providing a comprehensive reference resource, this developing evidence base will provide a deeper understanding of the impact our work is having, as well as highlighting emerging priorities. It will take the form of data compendiums, analytical reports, thematic briefings and strategic needs assessments, based on best practice in accessible information and meeting open data standards. Information in this evidence base will come from published data, informal data sources, relevant management information from all partners, and feedback from community engagement. It will be subject to review and interpretation by all of the community planning partners on an ongoing basis, to support agile and informed decision making across our CPP.

Measures of outcome	Current East Ayrshire	Current Scotland	Outcomes	Priorities for tackling inequalities	Progress
Life expectancy (years) <ul style="list-style-type: none"> • males • females (National Records of Scotland)	Males 75.9 (2017-19) Females 79.8 (2017-19)	Males 77.2 (2017-19) Females 81.1 (2017-19)	Males Increased and not below Scotland by 2030 Females Increased and not below Scotland by 2030	<ul style="list-style-type: none"> • Understand the low life expectancies in Kilmarnock North and Doon Valley • Address women's health in Southern Locality • Address older men's health 	
Unemployment rate (%) (DWP – Stat-xplore)	16-64 7.7% (Apr-Nov 2020)	16-64 6.1% (Apr-Nov 2020)	16-64 Reduced and not above Scotland by 2024	<ul style="list-style-type: none"> • Youth unemployment • The disability employment gap • Overcoming the COVID impact • Longstanding high levels of unemployment in Kilmarnock South 	
% of children in living in relative poverty (after housing costs). (DWP – Stat-xplore)	Children 0-19 22% (2018/19)	Children 0-19 17% (2018/19)	Children 0-19 Reduced by 2024	High levels of child poverty in: <ul style="list-style-type: none"> • Southern Locality • Kilmarnock South • Lone parent families 	

Measures of outcome	Current East Ayrshire	Current Scotland	Outcomes	Priorities for tackling inequalities	Progress
<p>Sense of community belonging</p> <p>% of adults who feel <u>no</u> real sense of belonging</p> <p>(Scottish Household Survey)</p>	<p>All adults 18% (2019)</p>	<p>All adults 21% (2019)</p>	<p>All adults Reduced and not above Scotland by 2024</p>	<ul style="list-style-type: none"> Households with children Communities in the most deprived SIMD quintiles 	
<p>Feeling safe in neighbourhood</p> <p>% of adults who feel <u>unsafe</u></p> <p>(Scottish Household Survey)</p>	<p>All adults 14% (2019)</p>	<p>All adults 12% (2019)</p>	<p>All adults Reduced and not above Scotland by 2024</p>	<ul style="list-style-type: none"> Women's perceptions of safety Perceptions of safety within communities in most deprived SIMD quintiles 	
<p>Feeling safe at home</p> <p>% of adults who feel <u>unsafe</u></p> <p>(Scottish Household Survey)</p>	<p>All adults 2% (2019)</p>	<p>All adults 3% (2019)</p>	<p>All adults Maintain low levels and not above Scotland by 2024</p>	<ul style="list-style-type: none"> Tbc (examples might include falls prevention, violence against women) 	
<p>Total recorded crimes</p> <p>(Groups 1-5 rate per 10,000 population)</p> <p>(Police Scotland)</p> <p>(Query – see note attached to Confidence in Policing at the end. Ongoing consultation with Police Scotland to finalise.)</p>	<p>464.7 (2019/20)</p>	<p>453.1 (2019/20)</p>	<p>Threats to public safety / wellbeing are resolved</p> <p>Needs of the Communities are addressed</p> <p>Public / Partners have Confidence in Policing</p>	<ul style="list-style-type: none"> Support victims of Hate Crime Focus on gender based violence Address harm from substance use 	

Measures of outcome	Current East Ayrshire	Current Scotland	Outcomes	Priorities for tackling inequalities	Progress
Accidental dwelling fires Per 100,000 dwellings (Scottish Fire and Rescue Service)	142.0	177.0	Maintain and not above Scotland by 2024	Understand the aspects contributing to the high level of accidental fires in Kilmarnock South	
Reconvictions % of cohort reconvicted (Scottish Government)	All 27.8% (2020)	All 26.3% (2020)	All Reduced and not above Scotland by 2024	<ul style="list-style-type: none"> Reverse the rising trend for women Reduce the higher rate for older age groups 	
General health % of adults who say their health is poor or very poor (Scottish Household Survey)	16-64 7.3% 65+ 16.4% (2019)	16-64 6.9% 65+ 12.3% (2019)	16-64 Reduced and not above Scotland by 2024 65+ Reduced and not above Scotland by 2024	<ul style="list-style-type: none"> Tenants Poorer health in the Cumnock & New Cumnock ward population Men 	
Mental wellbeing SWEMWB scores (Scottish Health Survey)	16+ 23.57 (2017)	16+ 24.23 (2017)	16+ Increased and not below Scotland by 2024	<ul style="list-style-type: none"> Younger age groups People with a limiting health condition 	

Measures of outcome	Current East Ayrshire	Current Scotland	Outcomes	Priorities for tackling inequalities	Progress
Developmental Concerns at 27-30 Month Review % <u>with</u> a concern (ScotPHO)	20.8% (2018/19)	15.9% (2018/19)	Decrease and not above Scotland by 2024	<ul style="list-style-type: none"> Concerns by SIMD quintile Concerns in LAC children Understand the high level of concerns in Cumnock & New Cumnock 	
% of adults supported at home who agree that they are supported to live as independently as possible (Health and Care Experience Survey)	Agreed or strongly agreed 70%	Agreed or strongly agreed 70%	Increase by 2024	Falls prevention in the Southern Locality	
Readmissions to hospital within 28 days Per 1,000 discharges (ISD Scotland)	Emergency 115.6 (2019/20)	Emergency 104.7 (2019/20)	Emergency Reduced and not above Scotland by 2024	Data relating to top contributing factors to hospital readmissions to be included to inform targeted action to address this	
Premature mortality Deaths per 100,000 under 75 (ISD)	Under 75 492 (2019)	Under 75 426 (2019)	Under 75 Reduced and not above Scotland by 2030	Address the high rate of early mortality in Southern Locality, especially alcohol specific mortality	

Additional indicators which are still under development/consideration

Measures of outcome	Current East Ayrshire	Current Scotland	Outcomes	Priorities for tackling inequalities	Progress
Environmental sustainability Tbc				Environment indicator to be determined as DP actions are agreed.	
% of school leavers in positive and sustained destinations	Tbc			Education/Attainment indicators still to be finalised	
% of college students who do not complete course	Tbc			Education/Attainment indicators still to be finalised	
Tenancy Sustainment	Tbc			Under consideration as indicator of poverty and wellbeing	
% of carers who say they feel supported in their role (Health and Care Experience Survey)	Tbc			Under consideration for inclusion	
Confidence in policing % adults <u>not</u> very confident in relation to preventing crimes (Scottish Crime & Justice Survey)	All 42%% (2017)	All 35% (2017)		TBC – consider this indicator, along with perceptions of safety to supplement/replace recorded crimes?	

Appendix 1: Links to National Outcomes

LOIP outcome measures	National Outcomes										
	Human Rights	Culture	Environment	Health	Fair Work &	Education	Children	Communities	Poverty	International	Economy
Life expectancy (years)				<input checked="" type="checkbox"/>	<input checked="" type="checkbox"/>			<input checked="" type="checkbox"/>	<input checked="" type="checkbox"/>		<input checked="" type="checkbox"/>
General health				<input checked="" type="checkbox"/>	<input checked="" type="checkbox"/>			<input checked="" type="checkbox"/>	<input checked="" type="checkbox"/>		
Mental wellbeing	<input checked="" type="checkbox"/>	<input checked="" type="checkbox"/>	<input checked="" type="checkbox"/>	<input checked="" type="checkbox"/>	<input checked="" type="checkbox"/>	<input checked="" type="checkbox"/>	<input checked="" type="checkbox"/>	<input checked="" type="checkbox"/>	<input checked="" type="checkbox"/>		<input checked="" type="checkbox"/>
Developmental Concerns at 27-30 Month Review	<input checked="" type="checkbox"/>	<input checked="" type="checkbox"/>		<input checked="" type="checkbox"/>			<input checked="" type="checkbox"/>	<input checked="" type="checkbox"/>	<input checked="" type="checkbox"/>		
Secondary 3 Literacy achieving third level or better	<input checked="" type="checkbox"/>			<input checked="" type="checkbox"/>		<input checked="" type="checkbox"/>	<input checked="" type="checkbox"/>	<input checked="" type="checkbox"/>	<input checked="" type="checkbox"/>		
Secondary 3 Literacy achieving third level or better	<input checked="" type="checkbox"/>			<input checked="" type="checkbox"/>		<input checked="" type="checkbox"/>	<input checked="" type="checkbox"/>	<input checked="" type="checkbox"/>	<input checked="" type="checkbox"/>		
% of school leavers in positive and sustained destinations	<input checked="" type="checkbox"/>			<input checked="" type="checkbox"/>	<input checked="" type="checkbox"/>	<input checked="" type="checkbox"/>	<input checked="" type="checkbox"/>	<input checked="" type="checkbox"/>			<input checked="" type="checkbox"/>
Unemployment rate (%)				<input checked="" type="checkbox"/>	<input checked="" type="checkbox"/>	<input checked="" type="checkbox"/>		<input checked="" type="checkbox"/>	<input checked="" type="checkbox"/>		<input checked="" type="checkbox"/>
% of children in living in relative poverty	<input checked="" type="checkbox"/>				<input checked="" type="checkbox"/>	<input checked="" type="checkbox"/>	<input checked="" type="checkbox"/>	<input checked="" type="checkbox"/>	<input checked="" type="checkbox"/>		<input checked="" type="checkbox"/>
Sense of community belonging	<input checked="" type="checkbox"/>	<input checked="" type="checkbox"/>			<input checked="" type="checkbox"/>	<input checked="" type="checkbox"/>		<input checked="" type="checkbox"/>	<input checked="" type="checkbox"/>		
Feeling safe in neighbourhood			<input checked="" type="checkbox"/>					<input checked="" type="checkbox"/>	<input checked="" type="checkbox"/>		
Total recorded crimes				<input checked="" type="checkbox"/>	<input checked="" type="checkbox"/>	<input checked="" type="checkbox"/>	<input checked="" type="checkbox"/>	<input checked="" type="checkbox"/>	<input checked="" type="checkbox"/>		
Accidental dwelling fires			<input checked="" type="checkbox"/>	<input checked="" type="checkbox"/>		<input checked="" type="checkbox"/>		<input checked="" type="checkbox"/>			
Tenancy Sustainment	<input checked="" type="checkbox"/>			<input checked="" type="checkbox"/>	<input checked="" type="checkbox"/>		<input checked="" type="checkbox"/>	<input checked="" type="checkbox"/>	<input checked="" type="checkbox"/>		
Reconvictions	<input checked="" type="checkbox"/>			<input checked="" type="checkbox"/>	<input checked="" type="checkbox"/>			<input checked="" type="checkbox"/>			
% of adults supported to live as independently as possible	<input checked="" type="checkbox"/>			<input checked="" type="checkbox"/>				<input checked="" type="checkbox"/>			
Readmissions to hospital within 28 days Per 1,000 discharges	<input checked="" type="checkbox"/>			<input checked="" type="checkbox"/>				<input checked="" type="checkbox"/>			
Environmental sustainability			<input checked="" type="checkbox"/>		<input checked="" type="checkbox"/>			<input checked="" type="checkbox"/>	<input checked="" type="checkbox"/>		<input checked="" type="checkbox"/>
Premature mortality	<input checked="" type="checkbox"/>		<input checked="" type="checkbox"/>	<input checked="" type="checkbox"/>				<input checked="" type="checkbox"/>	<input checked="" type="checkbox"/>		