

EAST AYRSHIRE COUNCIL

CORPORATE GOVERNANCE COMMITTEE – 3 JUNE 2003

STATISTICAL INFORMATION ON REVENUE COLLECTION

Report by the Director of Finance

1 PURPOSE OF REPORT

- 1.1 The purpose of this report is to update Members on the position of the Council with regard to billing and collection of local taxes as at 31 March 2003.

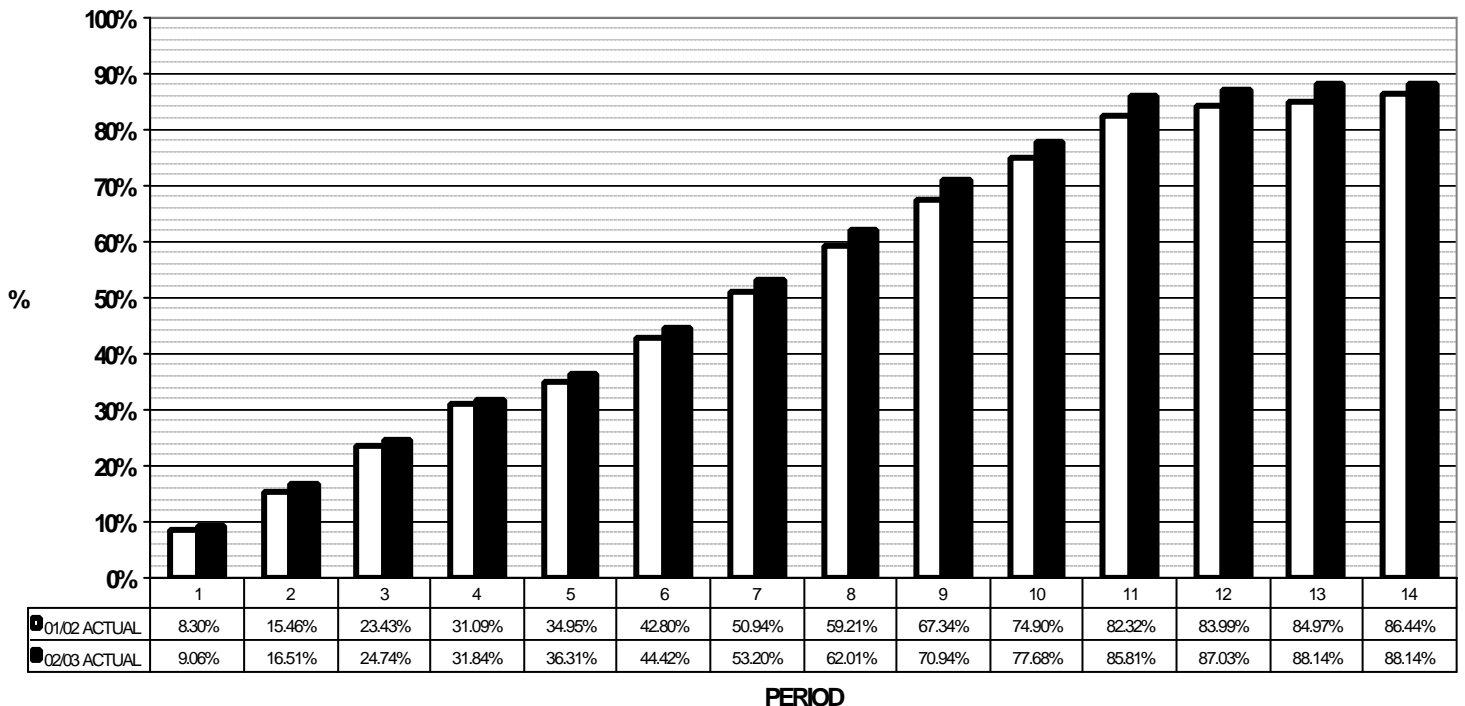
2 BACKGROUND

- 2.1 The Director of Finance is responsible for the billing and collection of the current year Council Tax and Non-Domestic Rates and for the collection of arrears of these, and arrears of Community Charge (Poll Tax) which were outstanding at 31 March 1996, in respect of properties within East Ayrshire.

3 GENERAL

- 3.1 Annual Council Tax and Non-Domestic Rates bills for 2002/2003 were issued in March and April 2002.

2002/03 COUNCIL TAX - % COLLECTION



4 COUNCIL TAX

- 4.1** The graph on the previous page shows that 88.14% of the council tax billed for 2002/03 was collected by 31 March 2003. This is an improvement of 3.17% on collection at the same period last year.
- 4.2** Previous years' outstanding balances have been reduced by £3.05m since 1 April 2002 as a result of recovery action taken during this period. The total balance outstanding at 1 April 2002 for previous years was £20.351m. Recovery action is continuing to reduce this debt.

5 NON-DOMESTIC RATES

- 5.1** As at 31 March 2003, 89.47% of Non-domestic Rates due in the year has been collected compared to 88.57% collected at the same time last year.

6 COMMUNITY CHARGE ARREARS

- 6.1** Community Charge arrears collected during 2002/03 up to 31 March 2003 total £0.122m. These debts are now between 10 and 14 years old and although becoming more difficult to collect they continue to be pursued.

7 RECOMMENDATIONS

- 7.1** It is recommended that Members note the contents of this report.

Alex McPhee
Director of Finance

IMDMW
15 May 2003

LIST OF BACKGROUND PAPERS NIL

Members wishing further information should contact Iain MacMillan, Head of Exchequer Services, Tel: (01563) 576443.