

**East Ayrshire Community Health Partnership Committee  
Monday 27 October 2008 at 9.30 am  
Briefing Room, Education Centre, Crosshouse Hospital, Kilmarnock**

**1. ATTENDANCE**

**Present:** Councillor Drew Filson, Chair (Non Executive Board Member)  
Dr Carol Davidson (NHS Ayrshire & Arran)  
Councillor Elaine Dinwoodie (East Ayrshire Council)  
Dr Allan Gunning (NHS Ayrshire & Arran)  
Mrs Rita Miller (NHS Ayrshire & Arran)  
Councillor John MacKay (East Ayrshire Council)  
Councillor Douglas Reid (East Ayrshire Council)

**In attendance:** Mrs Marlene Harkis, Acting Senior Manager Community Care (East Ayrshire Council)  
Mrs Anne Robertson, Community Partnership and Regeneration Officer (East Ayrshire Council)  
Mrs Mandy Yule, Health Care Director, Integrated Care & Partner Services (NHS Ayrshire & Arran)  
Pauline Sharp, Secretary to NHS Board Committees (Minutes)

**2. Welcome:** Councillor Filson warmly welcomed all members to the inaugural meeting of the East Ayrshire CHP Committee.

**3. TERMS OF REFERENCE AND CHP COMMITTEE LAUNCH EVENT Action**

**3.1 Terms of Reference** - Mrs Yule highlighted the Terms of Reference for the East Ayrshire Community Health Partnership Committee previously approved by the Strategic Alliance and colleagues earlier in 2008. All members of the Committee were in full agreement with content of the Terms of Reference.

**3.2 CHP Launch Event** – Mrs Yule referred to Paper 2 which detailed the outcomes from the CHP Committee Launch Event held on Friday 3 October at Gailes Lodge, Irvine. She updated the Committee advising 2 CHP facilitators had been appointed and a third offered the position subject to references. It is hoped to have all 3 in post by the next round of CHP Committee meetings at the beginning of 2009.

**3.3** The Committee was advised that all members of the CHP Forums and CHP Officer groups had now been filled. A development event is being held on 7 November to engage with these members and provide an opportunity for all to share their thoughts on taking the CHP agenda forward. Committee members are also invited to this event. The Committee supported this initiative.

#### **4. COMMUNITY HEALTH AND WELLBEING PROFILE AND PUBLIC HEALTH PRIORITIES**

4.1 Dr Davidson provided a PowerPoint presentation (copy attached - Appendix 1) and distributed a copy of the Health and Wellbeing Profiles 2008 for East Ayrshire CHP to provide a flavour of the health status in East Ayrshire. Included inside was a chart containing 61 indicators which compared each indicator to the Scottish average. Among the areas Dr Davidson gave a brief overview on were:

- Life expectancy.
- Substance misuse.
- Respiratory disease.
- Stroke.
- Emergency admission.
- Long term illness.
- Teenage pregnancies.
- Breast feeding.
- Obesity.

Specific information on all aspects of health and wellbeing will be provided as required at future meetings to help the Committee get an overview, prioritise and take decisions on local issues.

4.2 The Committee discussed the Local Authority perspective and the challenge of monitoring Single Outcome Agreements (SOA) to ensure they are addressing and moving forward issues in the way the Committee consider appropriate. Members expressed enthusiasm for the new co-dependent relationship and looked forward to achieving the best for each organisation and for the people in Ayrshire.

4.3 Dr Davidson encouraged all to contact her if they required further information or wished to discuss issues (e-mail [carol.davidson@aapct.scot.nhs.uk](mailto:carol.davidson@aapct.scot.nhs.uk) or telephone 01292 885873). Councillor Filson thanked Dr Davidson for the informative presentation.

#### **5. SINGLE OUTCOME AGREEMENT**

5.1 A report was presented, which provided CHP Committee members with a copy of East Ayrshire Community Planning Partnership's Single Outcome Agreement (SOA) 2008-2011 and an overview of progress within East Ayrshire. The SOA was signed off by all Community Planning Partners in June 2008 and by Scottish Ministers on 2 July 2008 (one year ahead of schedule).

5.2 It was highlighted that guidance in respect of the future development of and the annual reporting process for the SOA is currently awaited from the Scottish Government, and the report set out the steps already taken within East Ayrshire to ensure timeous annual reporting.

5.3 The Committee considered that SOAs would be a main stream of committee business, noted the timescales and agreed to receive update reports in the future.

## **6. INTEGRATED RESOURCE FRAMEWORK – OVERVIEW OF PLAN AND PROCESS**

6.1 Mrs Yule provided an overview of the Integrated Resource Framework (copy attached Appendix 2). This is an activity based, patient level resource model that integrates, at CHP level, Health and Social Care resources spent on behalf of members of the community represented by the CHP. The Scottish Government recommend that Board areas consider the use of the emerging “Highland Cost Cube” methodology as a basis for developing this Framework nationally. This model utilises information around activity and costs from both Health and Social Care, and helps partners to more clearly understand where resources are being used currently, and how they might be deployed fairly, equitably and to achieve the desired outcomes.

6.2 Mrs Yule highlighted the 5 main principles on which the Integrated Resource Framework should be based:

- Outcomes focused
- Patient centred
- Evidence based
- Integrated
- Sustainable

6.3 The Strategic Alliance have undertaken some basic profiling work and now plan to scope some project work to develop the use of a Framework. Partners within South Ayrshire CHP are interested in applying the methodology to Older Peoples Services and have secured the Joint Improvement Team’s (JIT) support to take this forward.

6.4 The Committee acknowledged that East Ayrshire Council and NHS Ayrshire & Arran have a history of close working particularly around Community Planning with this being a solid baseline to move forward from in terms of health improvement. Members considered it important that whole system approaches build on these current successes and strengths. The necessity of information systems to measure, monitor and analyse progress was regarded as vital with this also importantly highlighting possible overlaps and gaps.

6.5 Members’ attention was drawn to the recent satisfactory conclusion to the CHP Review and ongoing refocusing of management structures within NHS Ayrshire & Arran. These changes support the ongoing development of Integrated Patient Pathway approaches and will ensure staff work seamlessly across services.

## **7. ANY OTHER BUSINESS**

There was no further business.

## **8. DATE AND TIME OF NEXT MEETING**

**9.30 am Monday 12 January 2009, Room 1, Strathlea Resource Centre, Kilmarnock**

Signed: ..... Date: .....

*Health and ill-health  
in Ayrshire and Arran –*



**East Ayrshire**

Dr Carol Davidson  
Director of Public Health

# Outline

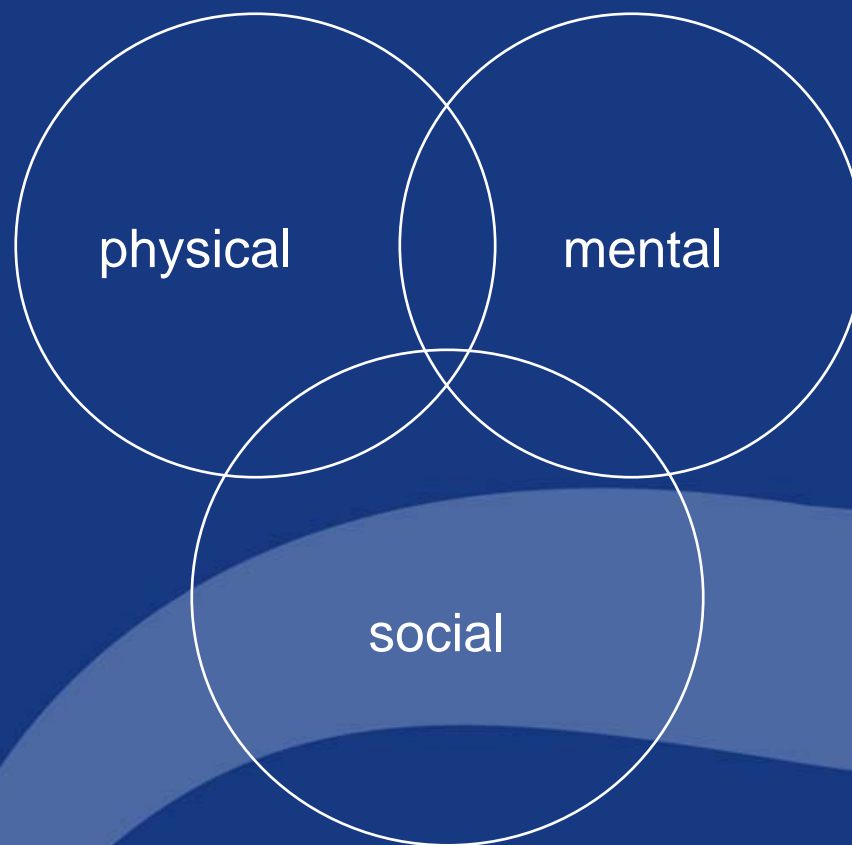


- Today
  - Brief overview of health in East Ayrshire
- Next meeting
  - More detail on particular issues and what are the priorities for action to improve health?

*The healthiest life possible for the people of Ayrshire & Arran*

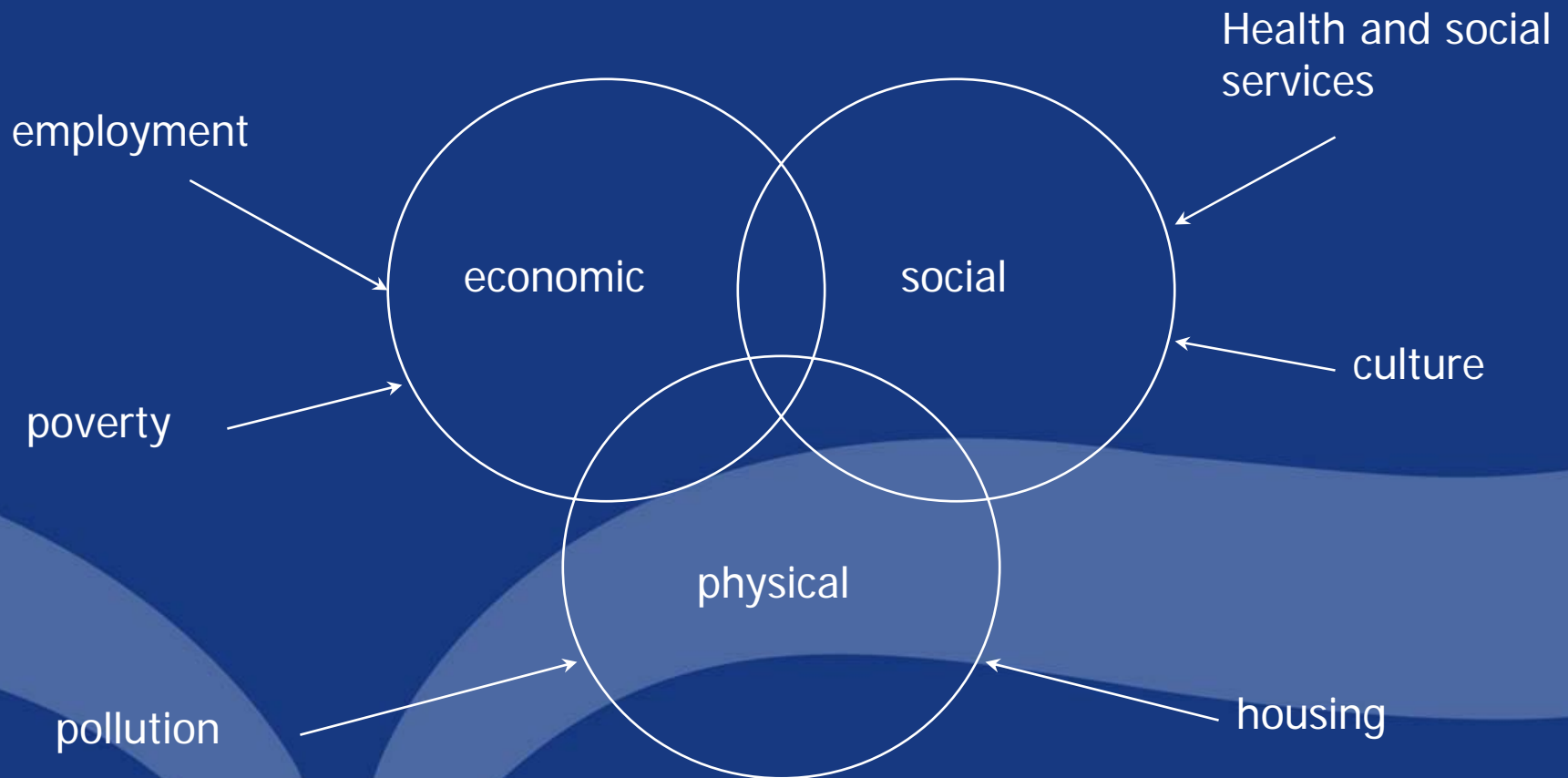


complete

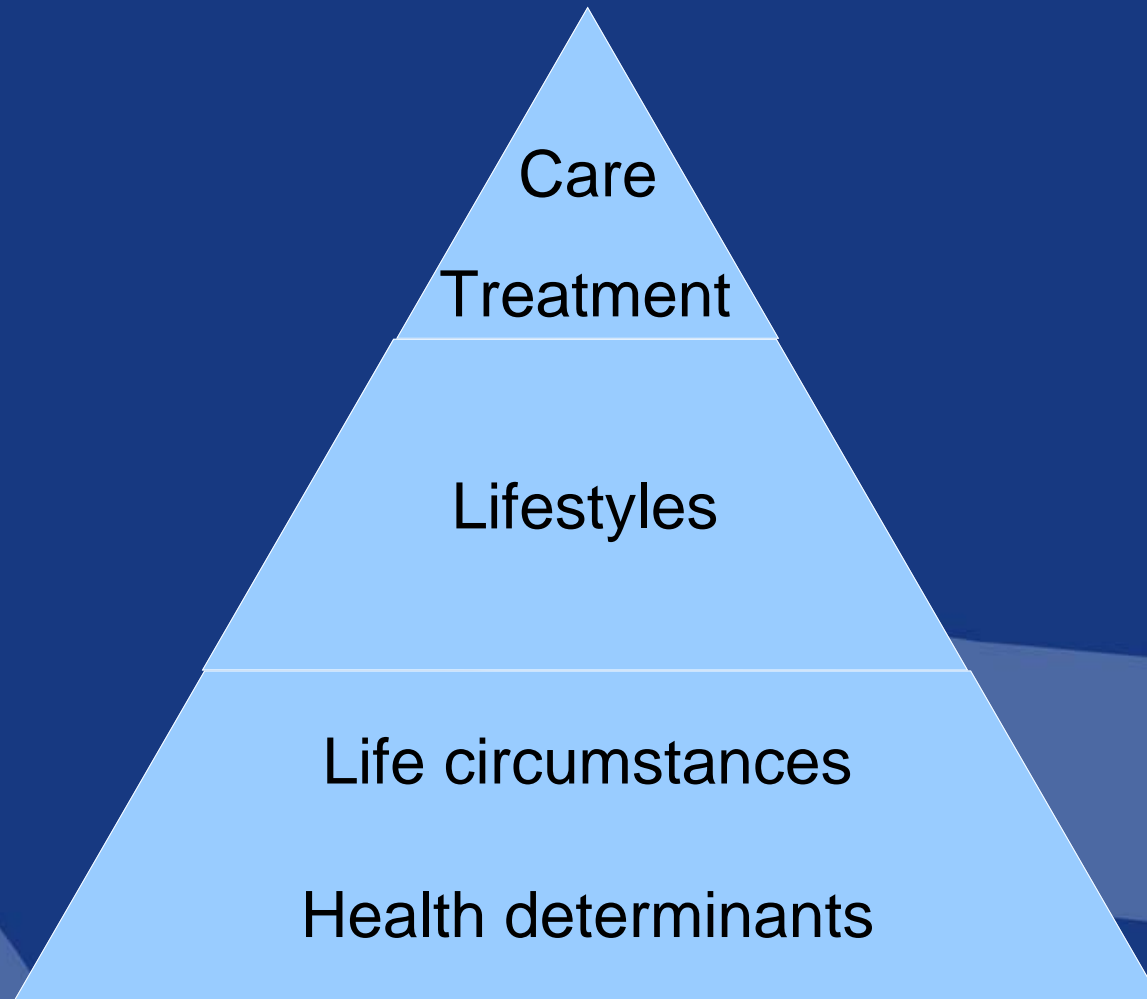


well-being

# Complex Environment

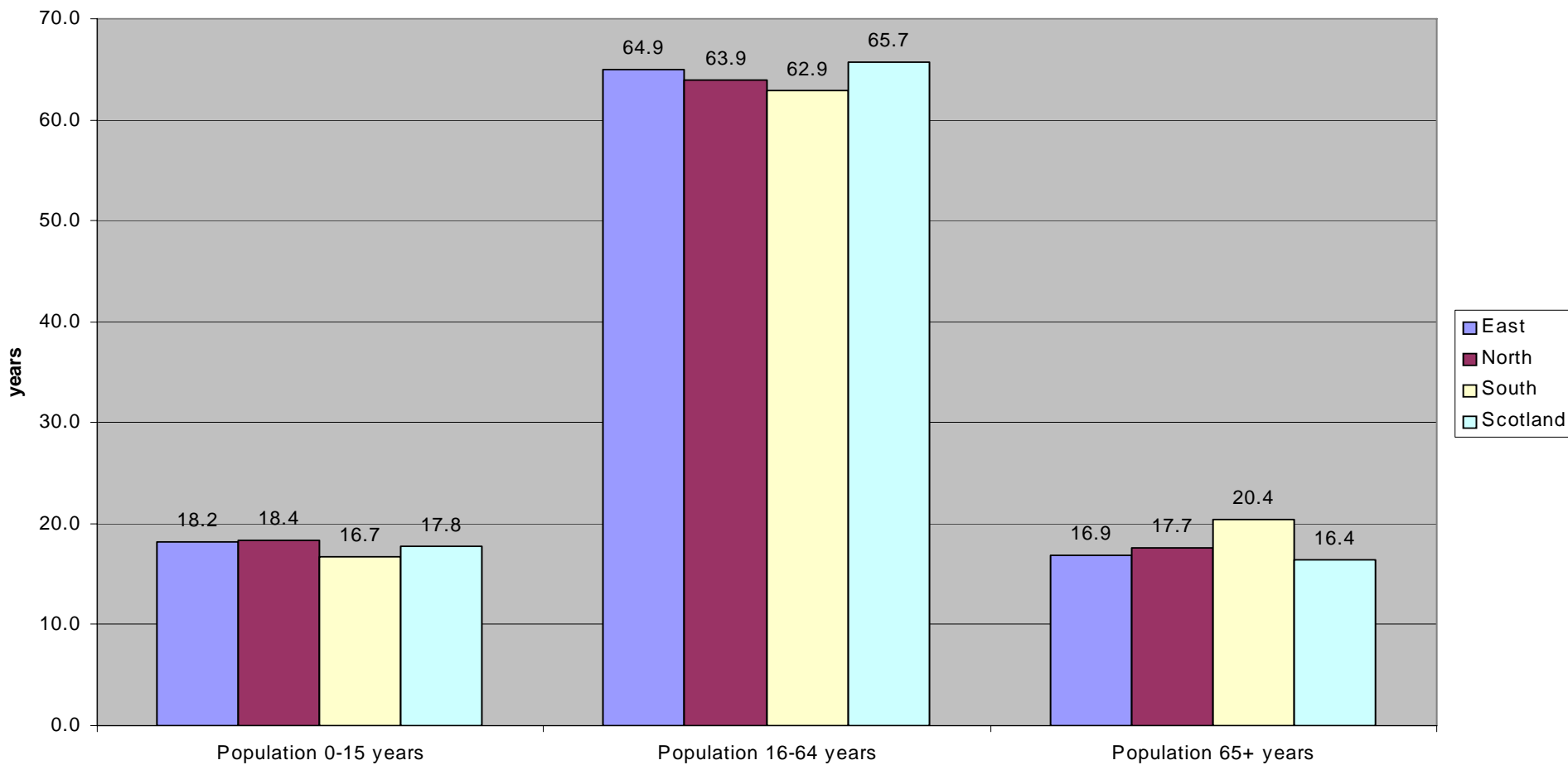


# Health Improvement



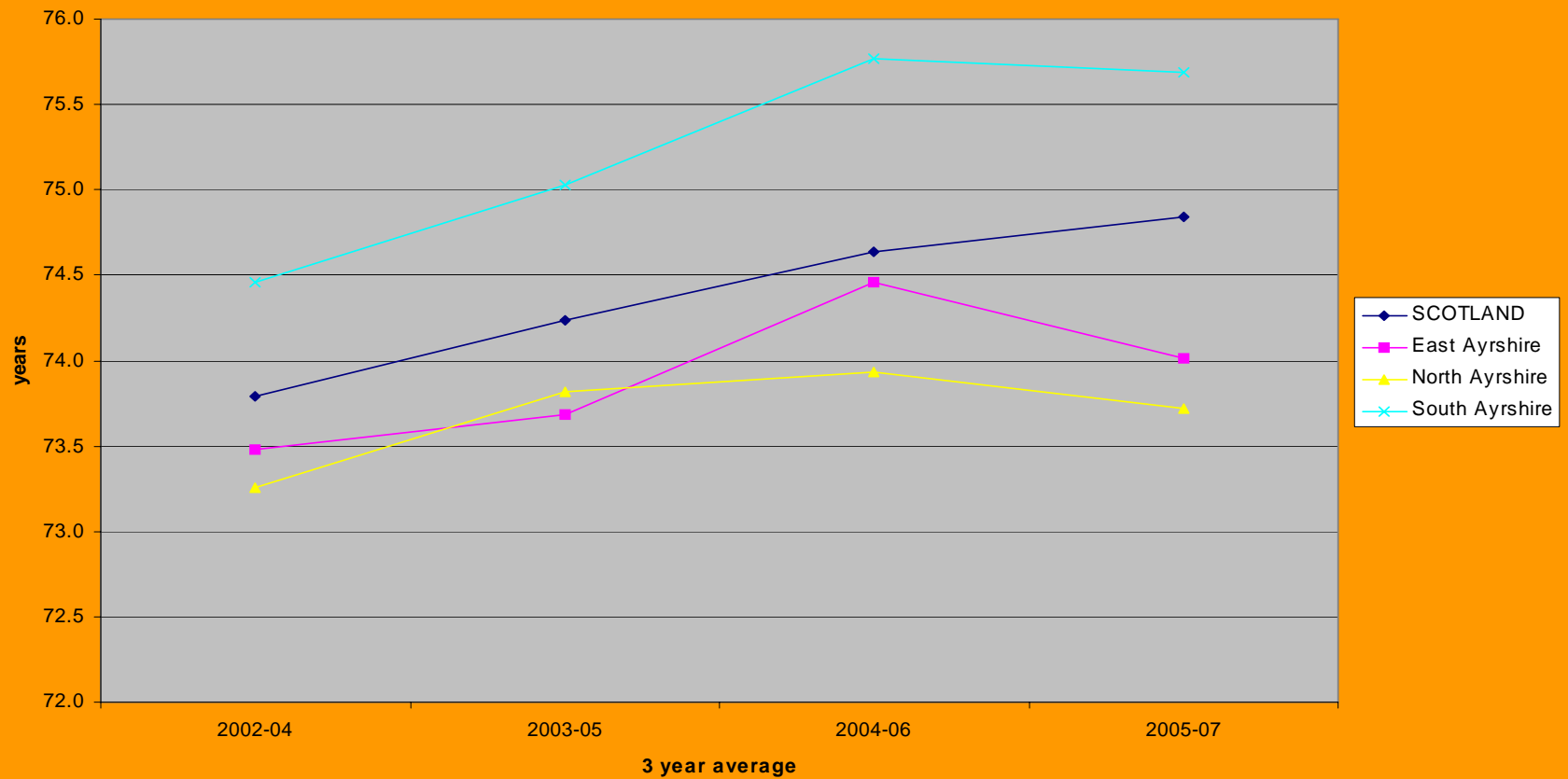
# East Ayrshire population

Population estimate; mid-year 2007



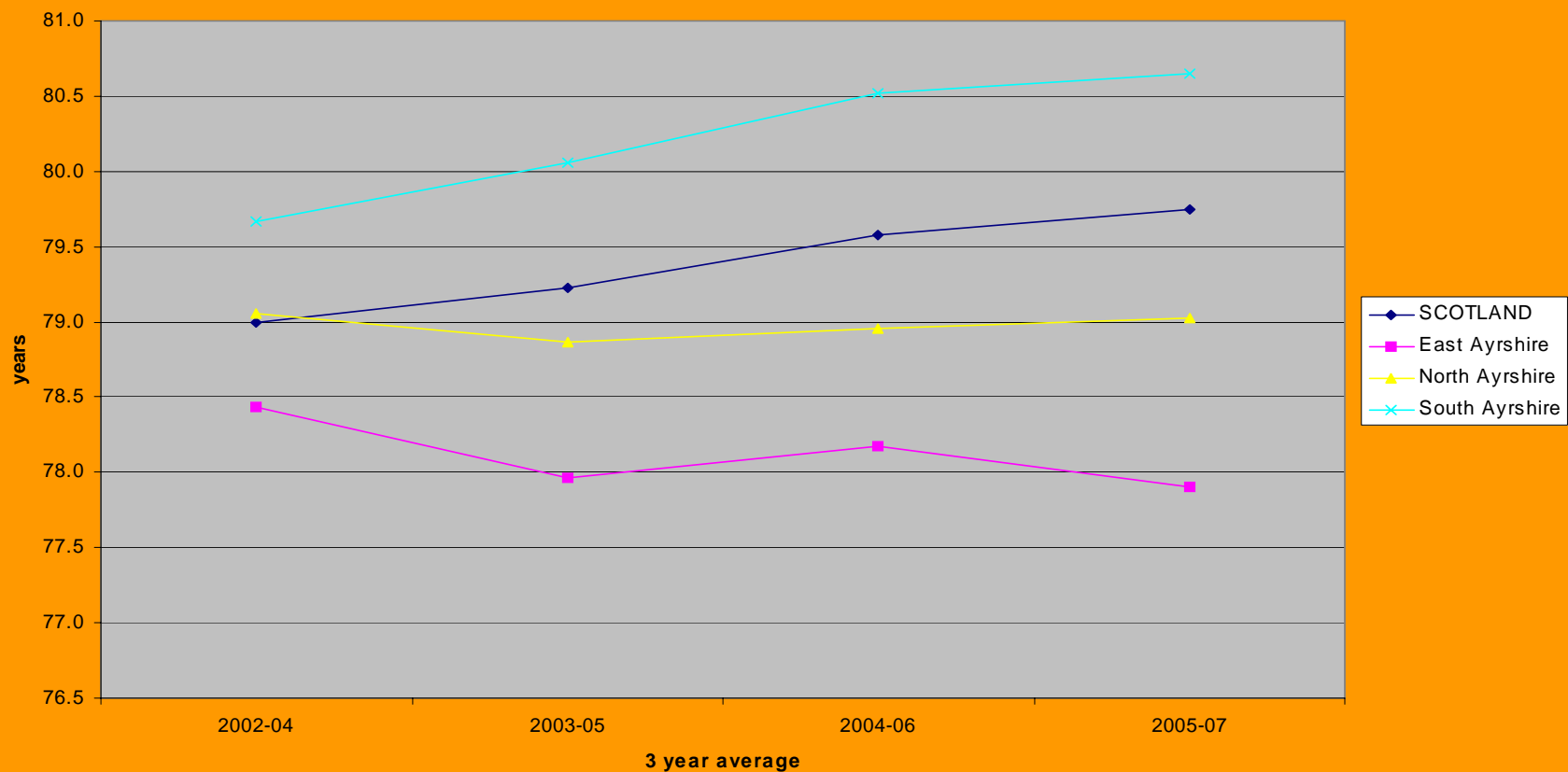
# Male life expectancy

Estimated average male life expectancy at birth in years; 2002-2007



# Female life expectancy

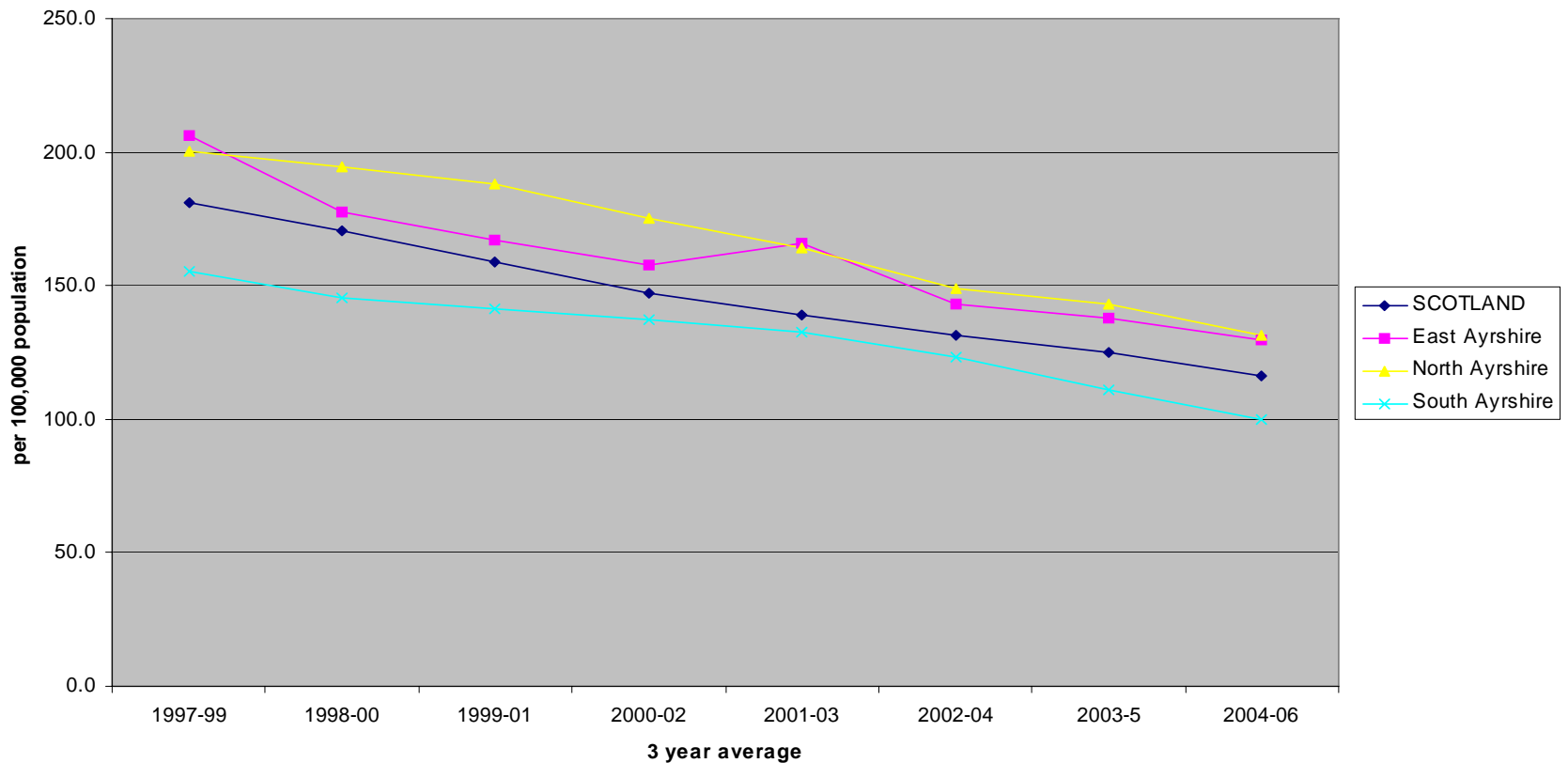
Estimated average female life expectancy at birth in year; 2002-2007



How is East Ayrshire doing on  
some priority areas?

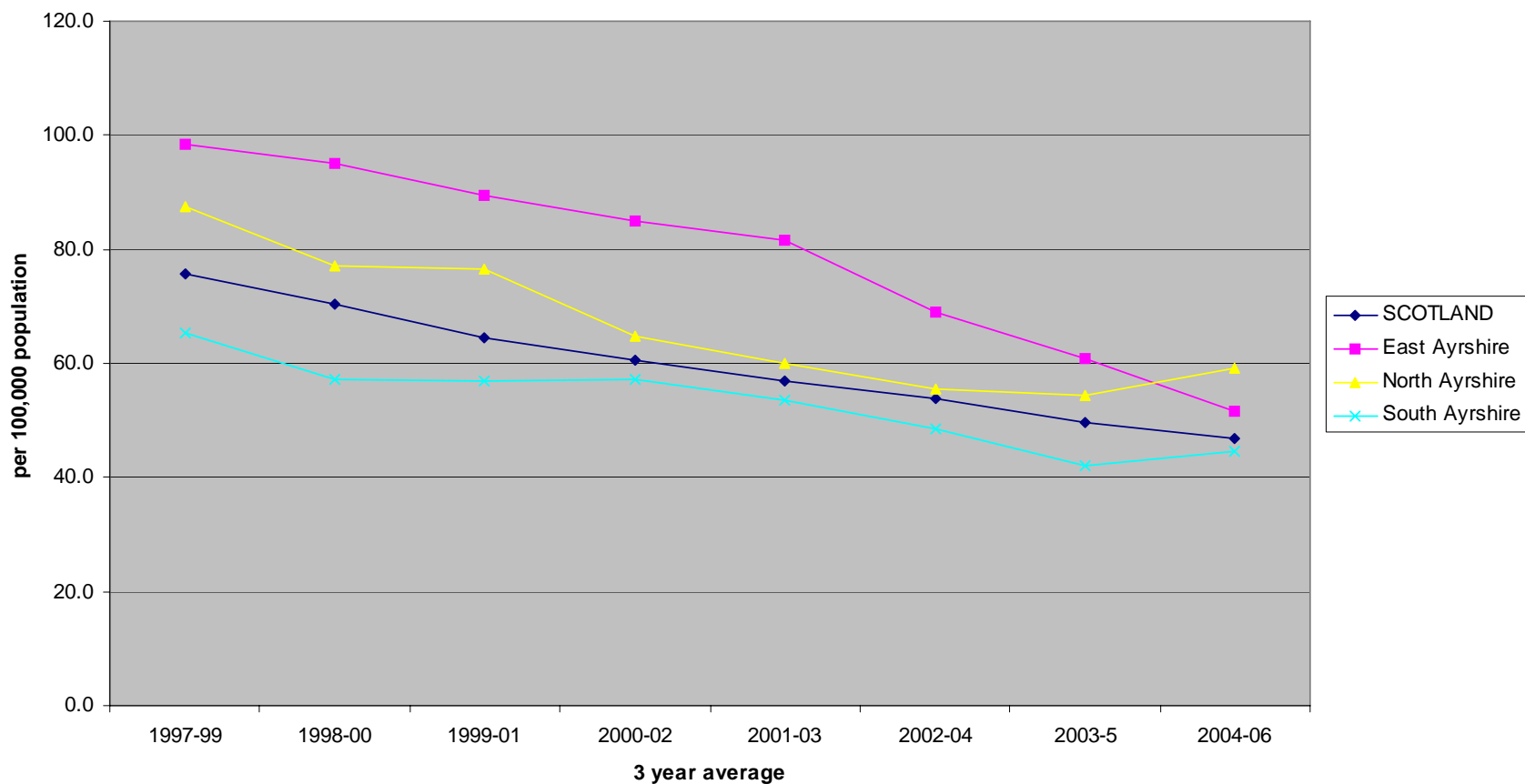
# Early male deaths from heart disease

Age-sex standardised (European Standard Population) male early deaths (<75) from all heart disease per 100,00 population; 1997-2006



# Early female deaths from heart disease

Age-sex standardised (European Standard Population) female early deaths (<75) from all heart disease per 100,000 population; 1997-2006

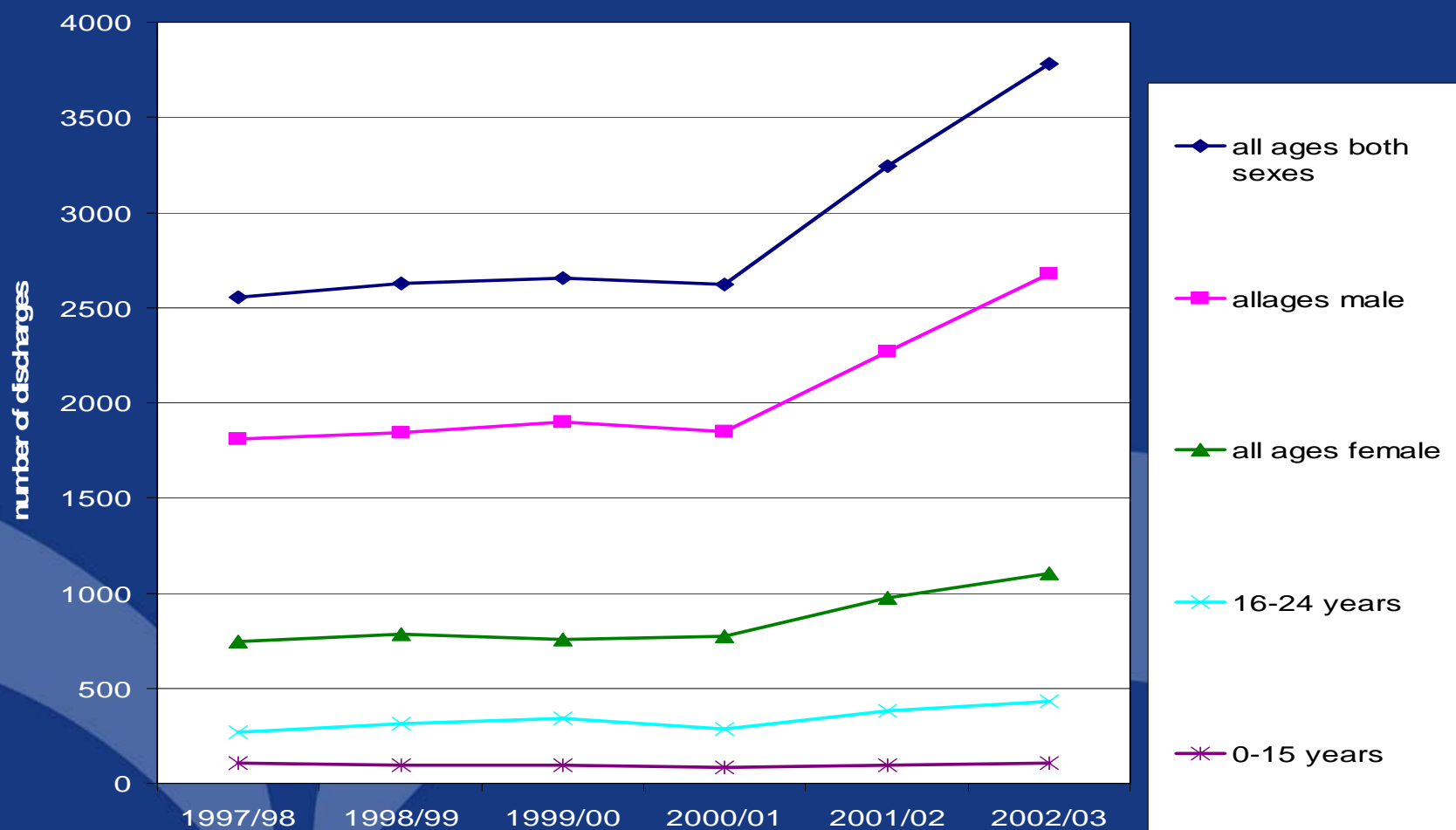


# Smoking



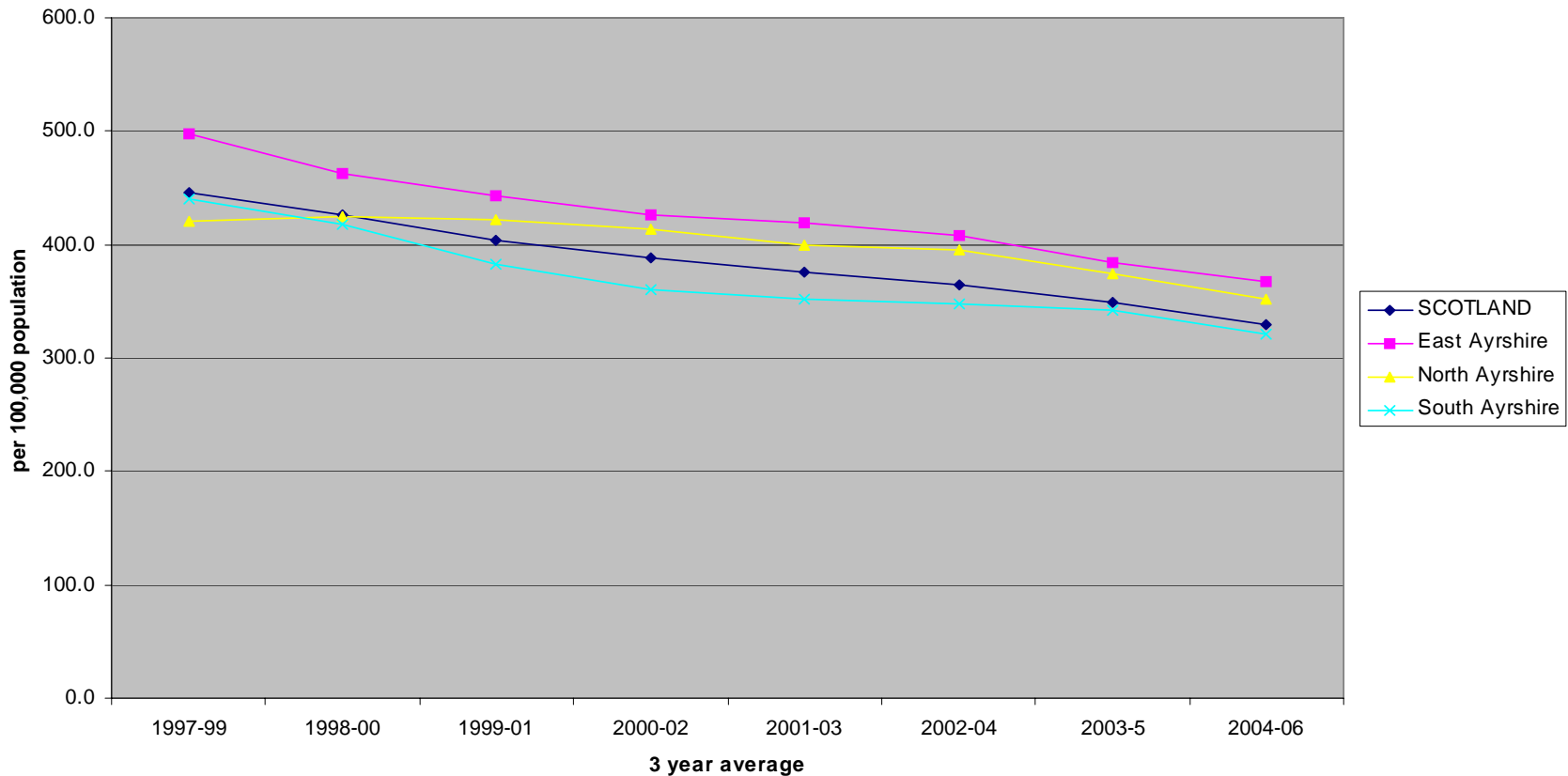
- Lung cancer deaths in women are high
- More young women starting to smoke
- >50% teenage mothers are smokers

# Alcohol related acute hospital discharges, 1997/98 – 2002/03



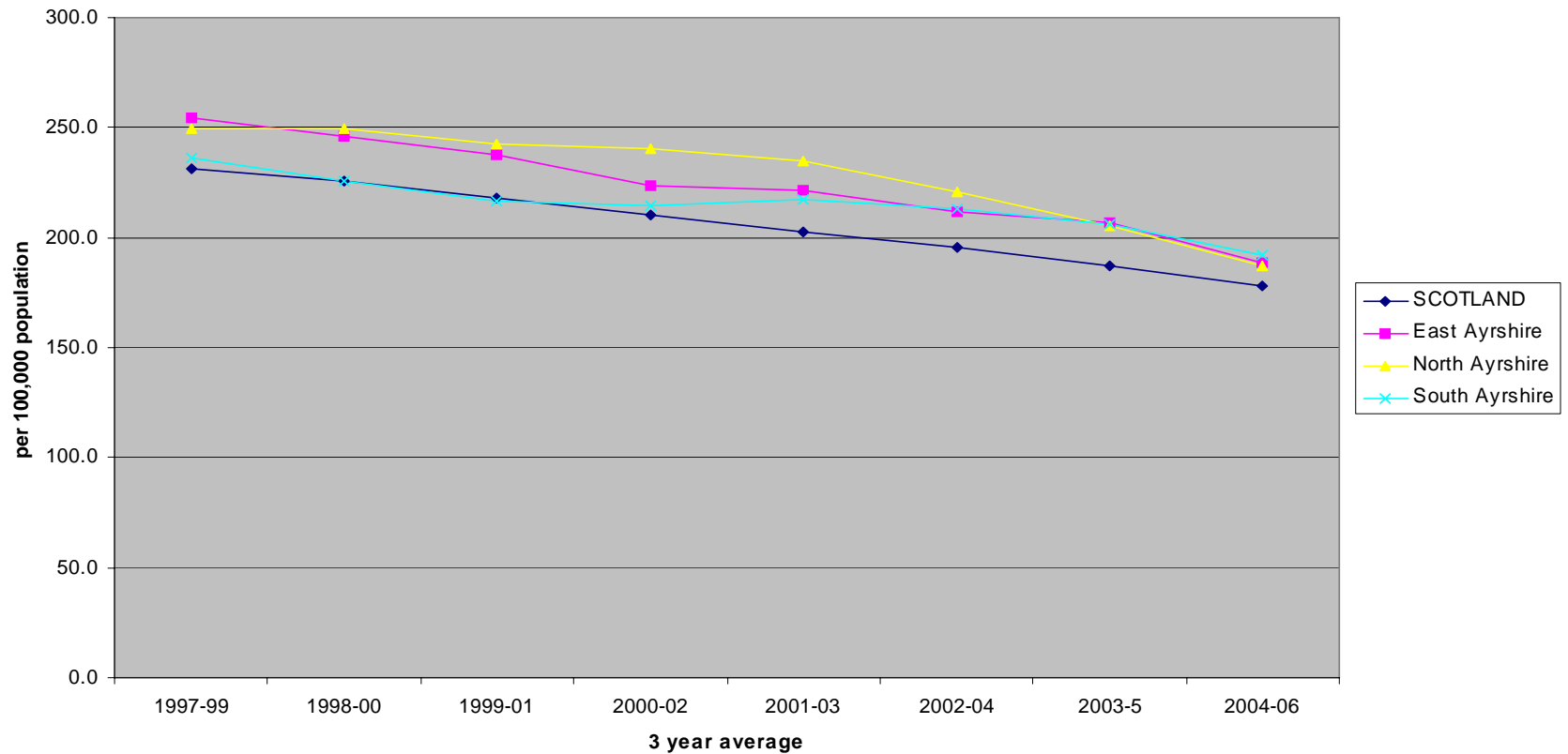
# admissions for heart disease

Age-sex standardise (European Standard Population) all coronary heart disease hospital discharges per 100,000 population; 1997-2006



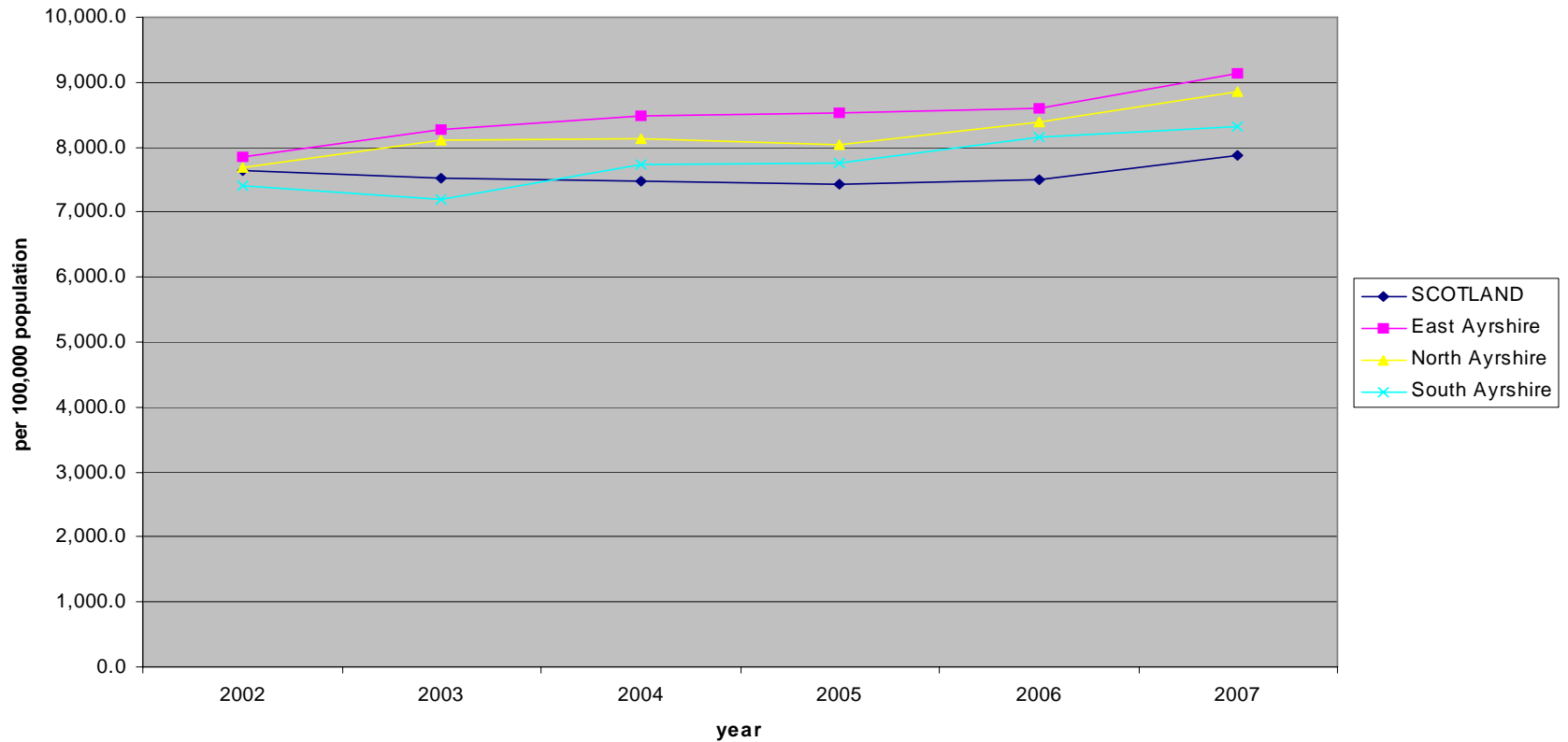
# Admissions for stroke

Age-sex standardised (European Standard Population) all stroke hospital discharges per 100,000 population; 1997-2006



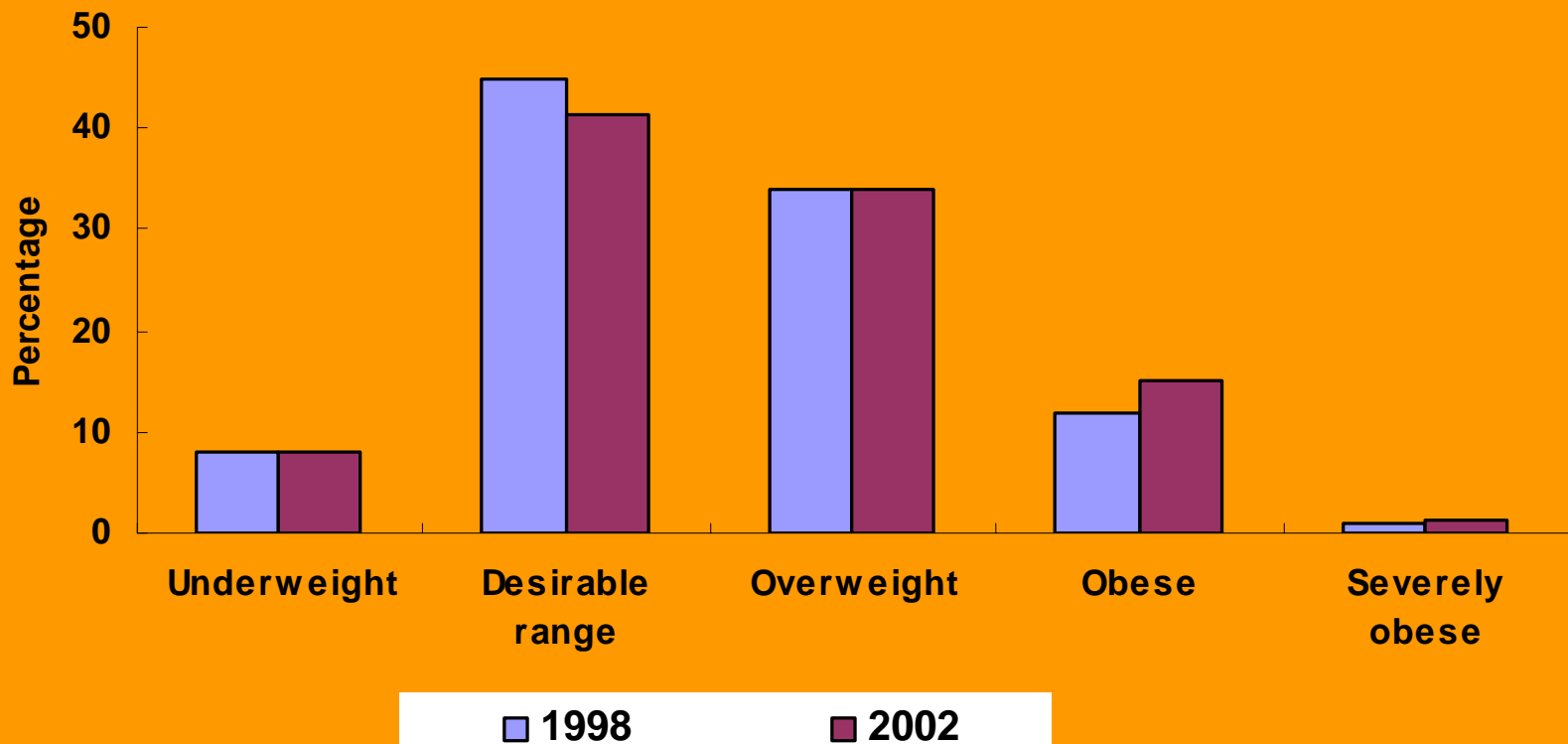
# Emergency admissions

Age-sex standardised (European Standard Population) Emergency admission rates per 100,000 population; 2002-2007



# Body Mass Index, 1998 and 2002

(source: local lifestyle surveys)



- Questions?

# Integrated Resource Framework – overview of plan and process

Mandy Yule  
Health Care Director  
Integrated Care and Partner Services

- Better Health Better Care
- Shifting the Balance of Care
- Improving information around activity and costs
- Examine partners protocols and relationships between partners

- CHP Partners using resources efficiently and effectively to meet agreed outcomes
- CHPs accounting for quality within a pooled financial envelope
- Development of pooled budgets for care programmes
  - deciding what the programme needs to deliver within the locality
  - moving funds around to achieve best outcomes

# National Initiative

## Highland Cost Cube methodology

Takes existing funding and activity information and matches this to community needs

? Fair ? Equitable in practise

- CHP commissioning in Highland plus pooling of budgets
- West Lothian – pooling budgets
- Tayside – care programmes
- Forth Valley – care programmes

# Locally

## Strategic Alliance

**Stage 1** - basic profiling work around resource allocation/cost information/activity information

**Stage 2** - Scoping work leading to a programme definition



**JIT overseeing IRF**  
**SBC – Kathleen Bessos**

# South Ayrshire

- JIT support
- Development of an integrated resource framework approach for Older Peoples Services
- Workshop with key partnership staff and JIT to progress this