

For approval of EA CHP Forum

**Draft - Minutes of East Ayrshire CHP Forum**

Wednesday 28 July 2010 at 2pm in Meeting Room 1, Strathlea House, Kilmarnock

1. WELCOME AND INTRODUCTIONS

- 1.1 Present**
- Mrs Rita Miller, Chair
 - Ms Louise Benson, Allied Health Professionals
 - Dr Iain Brown, PPF
 - Mrs Vicki Brown, CVO
 - Mrs Liz Moore, Healthcare Director
 - Dr William McAlpine, Area Medical Professional Committee
 - Mrs Jan McFarlane, Carers Forum
 - Mrs Nicola Pirie, Area Pharmaceutical Professionals Committee
 - Mr Archie Pryce, EA North Communities Federation
 - Dr David Richardson, EA Locality Group GP Lead
 - Mr Ian Willians, Area Dental Professional Committee
- In Attendance**
- Ms Joanne Atkinson, Programme Manager - IRF
 - Mrs Mary Ballantyne for Mrs Yvonne Templeton, Carers Forum
 - Ms Noreen Caldwell, Scottish Health Council
 - Mr Edward Clifton, Health Economist
 - Mrs Kay Gilmour, Chair Locality Group Children
 - Mr Dominic Jarrett, East Ayrshire IRF Project Team
 - Ms Katie Kelly, CHP Facilitator
 - Ms Janette McCreath, East Ayrshire IRF Project Team
 - Mr Kenny Milne, PPF Co-ordinator
 - Mr Owen Moseley, Health Economist
 - Ms Pauline Sharp (Minutes)
 - Mrs Yvonne Bennett, East Ayrshire Council
- 1.2 Apologies**
- Mr Jim Crichton, Director of Mental Health Services
 - Mr Stuart Donnelly, APF
 - Mr Eddie Fraser, Chair Locality Group Adult
 - Mrs Joy Rollie, PPF
 - Mr Ian Smith, Coalfield Communities Federation
 - Mr Ronnie Stevenson, Area Optical Professional Committee
 - Mrs Susan Wilson, Area Nursing & Midwifery Professional Cttee
 - Mrs Mandy Yule, Healthcare Director – Integrated Care & Partner Services

- 1.3 **Welcome** Mrs Miller welcomed Mrs Jan McFarlane and Mrs Mary Ballantyne (for Mrs Yvonne Templeton) representing the Carers Forum to their first EA CHP Forum meeting. These representatives could change following an election process at the Carers Sub Group in September. Also welcomed to the meeting were Mr Kenny Milne, PPF Co-ordinator, Ms Joanne Atkinson accompanied by Mr Edward Clifton and Mr Owen Moseley regarding IRF.

2. MINUTES OF THE PREVIOUS MEETING

- 2.1 The minutes of the 21 April February 2010 meeting were considered an accurate account of events and approved by the Forum.

2.2 Matters Arising

- 2.2.1 **Item 6.2 Integrated Resource Framework – Adults with Complex Care Needs** – Ms Kelly advised she had sent out the newsletter and that a second update would be available soon. These were available on the EA CHP Portal.

- 2.2.2 **Item 10 Update on EACH** – A request had been submitted to the Endowment Fund regarding hospital radio. Ms Kelly to provide future updates.

KK

- 2.2.3 **Item 16.1 – Obesity Audit** – Mrs Yule to progress when she comes back from sick leave to ensure there is a co-ordinated approach across all partners. A new paediatric consultant had been appointed and been charged with developing an obesity strategy for NHS Ayrshire & Arran.

- 2.2.4 All other matters arising were covered in the agenda.

3. IRF PHASE 1 - MAPPING

- 3.1 Ms Atkinson advised the paper provided feedback on the baseline mapping of resources and asked the Forum to note the findings along with the limitations of the analysis for some activity areas. She also asked the Forum to consider the mapping of resources at phase 1 macro level complete and with CHPs having identified their priority areas within phase 1 to note expenditure and budgetary analysis will occur in each of the project areas providing meaningful information for future decision making.

- 3.2 Table 1 of Paper 2 provided a breakdown of social care expenditure of the 3 local authorities with an explanation of the methodology used to analyse these figures provided prior to this. She advised phase 2 will focus more on particular services and provide more meaningful information.

- 3.3 Mr Owen Moseley provided a powerpoint presentation (please see

appendix 1 attached). This outlined the National Resource Allocation Committee (NRAC) formula in comparison with the actual spend in NHS Ayrshire and Arran. The main points covered were:

- What NHS Ayrshire & Arran have done
- Caveats and limitations
- NRAC and Actual Budget Allocation by Locality and Actual GP Expenditure by Locality.
- Discussion on the variation between actual and NRA allocation of resources and whether considered “fair share”.

3.4 The discussion was opened out to the Forum. Concern was expressed about how information is used in calculations to ensure resource allocation is in the right place for the right need. Deprivation and unemployment were considered to have a major impact. Some discussion took place in relation to what bearing the recent SIMD09 findings would have on this work with particular focus upon East Ayrshire’s inequalities. In addition a query was raised in terms of whether the analysis was based on where patients reside or where they are registered, since this could considerably distort figures. Dr McAlpine asked for clarification on this specifically in relation to registrations with GP Practices across North, South and East Ayrshire boundaries. Clarification was also sought in relation to the breakdown of NHS Ayrshire & Arran expenditure outwith their Health Board area, whether this included the use of Inverclyde and the RAH by North Ayrshire residents and how this would impact on the analysis/allocation of resources. Ms Atkinson to investigate and provide further clarification and assurance for the Forum. **JA**

4. IRF PHASE 2 - UPDATE

4.1 East Ayrshire IRF Team were in attendance and provided a powerpoint presentation (please see appendix 2 attached). The main points highlighted included:

- Health & Social Care in Future
- 2007/08 Health & Adult Social Care Expenditure for Scottish population aged 65+
- CHP Vision – “CHPs will unite all stakeholders in a locality partnership with the aim of improving the health, social care and healthcare of local populations.
- Objectives of Health & Social Care systems utilising the IRF.
- East Ayrshire Pilot –
 - * Allocation of resources in line with relative need
 - * Increased sustainability of service delivery
 - * Efficient utilisation of resources

- * Examine and identify how the resources might follow the individual's path.

4.2 The substantial amount spent on Community Support Packages was highlighted. Current models are being analysed to see how they can be improved, looking at maximising the role of everyone within each persons care. The lessons coming out of this pilot will be applicable to other areas. Mr Jarrett advised the draft report will be shaped in consultation with Carers, Clients, Primary Care and focus groups.

4.3 Concern had been expressed by many carers about how the IRF could affect people's care packages and the fact that carers and service users had not been involved in the process. It was considered really important that solutions were found with help from the community. It was agreed that the newly formed Carers Sub Group of the Forum would be kept informed and consulted in relation to ongoing developments with the IRF programme.

5. UPDATE ON THE DEVELOPMENT OF CHP CARERS SUB GROUP

5.1 An initial event had been held in May at the Burns Centre, Kilmarnock with a number of carers in attendance intimating there interest in becoming part of the CHP Carers Sub Group. Good progress had been made with Terms of Reference with a Chair and Vice Chair to be appointed at the next meeting. Mrs Miller advised the CHP were anxious to have carers involved developing a partnership and especially recognising their particular experience.

6. PUBLIC PARTNERSHP FORUM

6.1 **PPF Annual Event** – Mr Milne advised the Scottish Government had suggested all PPFs hold an annual event. The EA PPF had held its third annual event in Onthank Community Centre on 21 April 2010, which had been very successful. A report had been circulated on the event noting the 20 voluntary groups and organisations providing information stalls at the event. It is proposed the event next year will be held on 27 April 2011 in the south of East Ayrshire.

6.2 **PPF Surgeries** – The Forum was asked to note that EA PPF hold a surgery service, which is the first of its kind in Scotland and have been arranged in response to public need. These allow a raft of information to be taken out into the community and provide all people with the same opportunities. The Citizens Advice Bureau and Employability both attend the PPF surgeries to offer their individual services. Discussion was held on possible venues including pharmacies, GP surgeries, mobile libraries and the CHIP van.

6.3 **PPF Engagement with Young People** – Mr Milne provided the Forum with information on the development of the Young Persons PPF and the launch of the DVD (1 June) developed and performed by young people in East Ayrshire promoting and describing the PPFs in Ayrshire and Arran. Members of the Forum had the opportunity to watch the DVD and agreed it was of a very high standard and could lead to more good work in the future. A number of people had shown interest in having the children produce a similar DVD for them including NHS 24. It was considered that the DVD would be a good candidate for Ayrshire Achieves and the Daily Record awards.

6.4 Mrs Miller thanked Mr Milne for attending and providing the Forum with an excellent update on the work being accomplished by the PPF in East Ayrshire.

7. STRATEGY FOR CONSULTATION WITH CHILDREN & YOUNG PEOPLE

7.1 The paper outlined where East Ayrshire were at the stage of planning for the next 3 years. East Ayrshire Children and Young People's Services Plan sets out the priorities and commitments of partner agencies to meet agreed local and national outcomes and is about setting out all the proposals to use existing mechanisms to target work with young people.

7.2 The Forum endorsed the Strategy for Consultation with Children and Young People.

8. UPDATE ON THE ENGAGEMENT WITH MSYPs THROUGH DIALOUGE YOUTH

8.1 Ms Kelly advised the work is progressing well and interviews are being set up with members of the Forum and wider CHP membership. It was hoped that a presentation could be provided at a future meeting by the MSYPs updating the Forum on their work undertaken so far.

9. UPDATE ON EACH

9.1 Mrs Moore provided a brief update on EACH advising on the reconfiguration of services within the premises. A meeting was to be held with staff to discuss the business case and allow development to proceed. Ms Kelly advised a press release would be issued later on 28 July outlining these which she would e-mail to all members. From 30 August there would be a pilot single point of contact for rehabilitation service operating out of the Community Hospital and this is an extremely innovative development. A paper detailing the proposals for East Ayrshire Community Hospital would be submitted for the Forum's attention at the next meeting on 10 September.

**KK
LM**

10. OLG CHILDREN AND YOUNG PEOPLE DRAFT 22 JUNE MINUTES

10.1 Mrs Gilmour summarised the main points from the minutes:

- Breastfeeding Action Plan had been approved by the OLG.
- Additional Funding for CAMHs – this had been welcomed.
- Review of Children with disabilities – A very successful half day session had been held on 27 July.

11. OLG ADULTS AND OLDER PEOPLE DRAFT 23 JUNE MINUTES

11.1 The Forum noted the minutes. Ms Kelly advised there had been a very good presentation on oral health and that the Dr Edwards and Mr Ommer would attend a future Forum to provide the presentation allowing members to have a focus on this area of health. **KK**

12. PPF

12.1 The PPF had received numerous complaints regarding the current provision of incontinence products and services. It was agreed to request a paper on the recent changes within the continence service for consideration at the next Forum meeting on 10 September. **KK/LM**

12.2 Dental Services – Clarification was sought on the waiting times secondary dental care for patients on Warafin. It was agreed to seek clarification on this and report back to PPF reps via the CHP Facilitator. **LM**

13. COMMUNITIES FEDERATIONS

13.1 Mr Pryce advised the last meeting had been cancelled with the next being held on 9 August. Ms Kelly would be attending the September meeting. He would update the Forum at the next meeting but advised the good communication among the Federations was leading to a variety of work.

14. CARERS SUB GROUP

14.1 Mrs McFarlane and Mrs Ballantyne advised there had been a launch on the Consultation for Respite which had not been well attended by carers. The importance of engaging with young carers in a way that encouraged them and provided them with a voice was highlighted. The Forum looked forward to working with the Carers Sub Group to help move these issues forward.

15. ANY OTHER BUSINESS

15.1 **National Carers Strategy** – This had been published and Ms Kelly to **KK**

send out a copy and internet link to the Carers' Sub Group. The Carers' representatives to provide initial views to the Forum at the next meeting

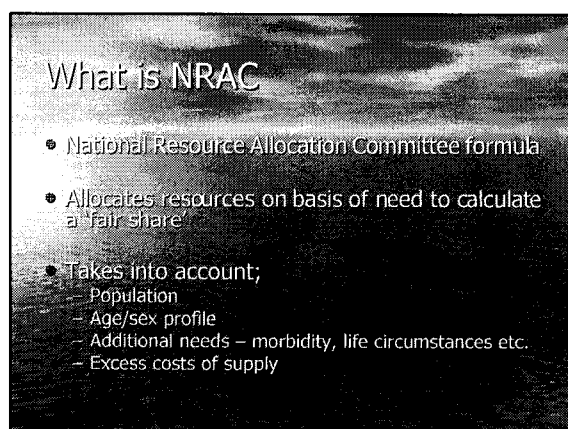
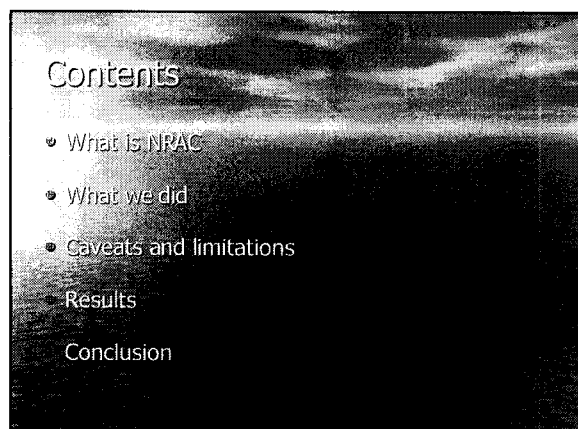
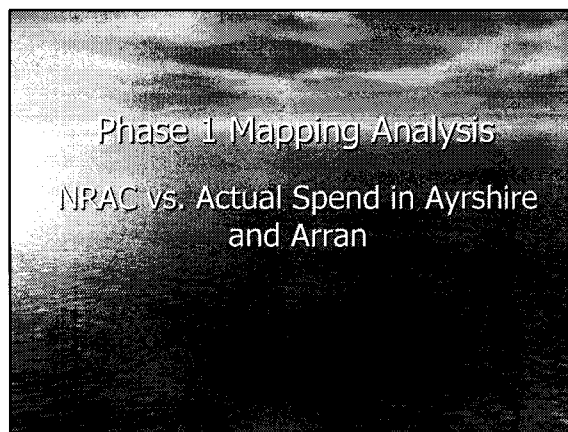
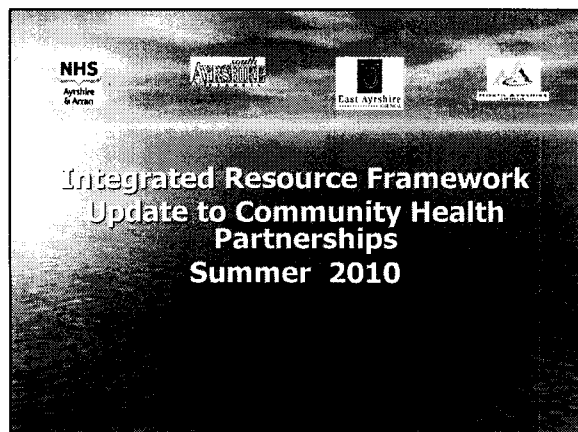
15.2 **Audit Scotland –National Audit of CHPs** – This report was looking at the way forward for CHPs and Ms Kelly advised she would keep the Forum updated on any findings. **KK**

15.3 **EA CHP Annual Report** – Ms Kelly advised this should be going to the EA CHP Committee and then the EA CHP Forum.

16. DATE AND TIME OF NEXT MEETING

2.00 pm Friday 10 September 2010, Meeting Room 1, Council HQ, Kilmarnock

Signed (Chair) Date.....



What we did

- Mapped the *actual* distribution of NHS Ayrshire & Arran spend across North, East and South Ayrshire.
- Mapped the *actual* distribution of NHS spend to individual GP practices in each locality.

Calculated a 'fair share' of resources for each locality and GP practice (NRAC).

A comparison was made between actual spend and the 'fair share' allocation.

Caveats

- Total NHS Ayrshire and Arran spend can not be wholly allocated to each local authority or GP practice.
- Additional GP practice in NRAC calculations.
- Cross-border activity not included in the actual spend calculation.

Indicative exercise using a newly developed tool

Budget and Actual Budget Allocation by Locality

Locality	NRAC Budget Allocation (£)	Actual Budget Allocation (£)	Difference between Actual and NRAC (£)
North	182,656,000	168,969,000	(13,687,000)
South	146,713,000	146,120,000	(593,000)
East	153,118,000	167,398,000	14,280,000
Total	482,487,000	482,487,000	0

NRAC and Actual GP Expenditure by Locality

Locality	NRAC Budget Allocation (£)	Actual Budget Allocation (£)	Difference between Actual and NRAC (£)
North	106,210,505	102,138,837	(4,071,667)
South	85,325,868	86,157,275	831,407
East	89,050,607	92,309,734	3,259,127
Total	280,586,980	280,605,846	18,867

Discussion

- Variation between actual and NRAC allocation of resources
 - North Ayrshire less than 'fair share'
 - East Ayrshire more than 'fair share'
 - South Ayrshire almost equal 'fair share'

Is the variation understandable and appropriate

Conclusion

- NRAC: a resource allocation formula which calculates a 'fair share' of resources
- Calculated a 'fair share' of resources for local authorities and GP practices

Compared the fair share allocations against actual spend

Exploratory analysis found there is variation

NHS
Ayrshire
& Arran

East Ayrshire

Integrated Resource Framework

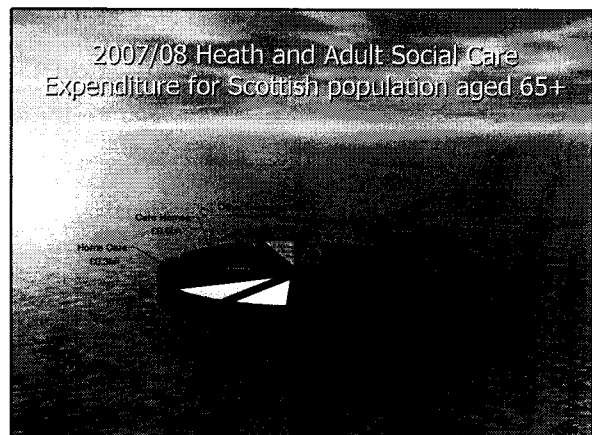
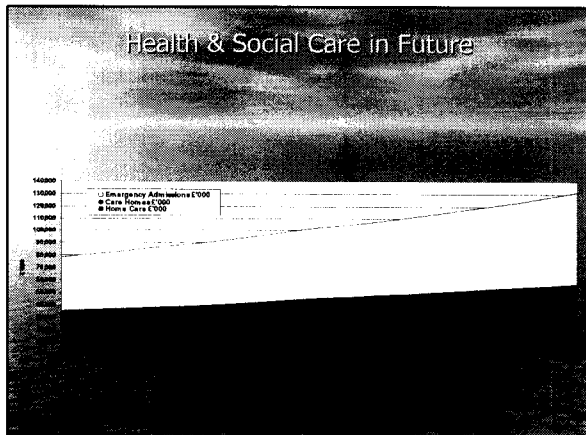
East Ayrshire Partnership

Eddie Fraser
Head of Service Community Care,
East Ayrshire Council

Integrated Resource Framework

- How are we using our resources?
- What are our resources achieving?

How can we plan and invest our resources in a different, more effective way to support shifts in the balance of care?



Community Health Partnership Vision

"We will unite all stakeholders in a locality partnership with the aim of improving the health, social care and healthcare of local populations"

Objectives

- Local Clinical Care systems will utilise the IRF:
- to move from historical budgets towards "fair shares" by locality/pathway
- as a mechanism to support and evidence a shift in the balance of care
- to support improvement in health of local populations
- to support Officer Locality Groups to drive service improvement
- to support development of aligned budgets to inform system wide prioritisation

EAST AYRSHIRE PILOT

- Deliver improvements in services to adults with complex care needs in East Ayrshire through development of partnership working

EAST AYRSHIRE PILOT

- Allocation of resources in line with relative need
- Increased sustainability of service delivery
- Efficient utilisation of resources

Examine and identify how the resources might follow the individual's path.

EAST AYRSHIRE PILOT

Area: Resource Management

Understanding of Full resource Commitment within the partnership and any known variables

Detail of Known Resource Pressures and Commitments.

Service Model	Number of Service Users	Average Annual Cost of Support Model	Annual SAC Commitment
	13	£1,185.19	£15,407.47
	54	£323,493	£17,390,795

Annual Cost of Purchased Care	Current Number of Service Users			Cost	
	LD	MHA	TOTAL	Average Cost of Care Package	Annual Commitment
£1,185.19	2	1	3	£324,666	£1,442,178
£1,185.19 to £1,194	8	1	9	£155,170	£1,442,510
£205,15,450	91	1	92	£70,330	£1,518,425
£186,15,450	30	3	33	£53,150	£1,662,950
£135	85	55	132	£6,067	£806,760
Total	197	61	258	£93,453	£8,650,795

EAST AYRSHIRE PILOT

Area: Service Management

- Evaluation of service models including where appropriate cost/benefit analysis
 - Comparison of IORN across service areas
 - Enhance preventative and rehabilitation provision to reduce need for critical/high volume service input
- Develop Joint Models of Support and Treatment in the Community

EAST AYRSHIRE PILOT

Area: Organisational Development

- Shared understanding of involvement of people in planning and managing their own health and mental care needs (Personalisation / self management)

Shared understanding and Ownership of risk, Agree risk levels all agencies will work with

Partnership Management Models

EAST AYRSHIRE PILOT

to date:

- Identification of 'complex' clients on teams' caseloads
- Additional information for identified clients in 3 areas: KA3 1; KA6 7; KA5 6 requested and provided
- Discussions with staff re - partnership working, resource pressures, effective practice.

EAST AYRSHIRE PILOT

Initial issues identified initially

• Case list info sought for 127 within the target postcodes

Groups with:

- Community LD Team
 - Social Work LD Team
 - Community MH Team
 - Social Work MH Team
 - EAC Mental Disorder Team
 - EAC CAST Team
 - Health and LA Occupational Therapists Providers
- Interviews with team managers
 - Discussion with family carers as part of PIP consultation

EAST AYRSHIRE PILOT

Initial contacts made in relation to:

• Directed Supports (In Control Scotland)

• Developing supports within the community (Neighbourhood Networks)

- Housing
- Provider Commissioning

EAST AYRSHIRE PILOT

Next Steps:

• Information collated to be compiled into a draft report by end of August

• Draft report to be informed and shaped via consultation with service user and carer forums

• Final report to be presented at CHP committee on 4th October