



Information and Contact Details



You can write your own details in this part so that you have a record of everything

Type of Assessment

Name of Lead Professional/contact details

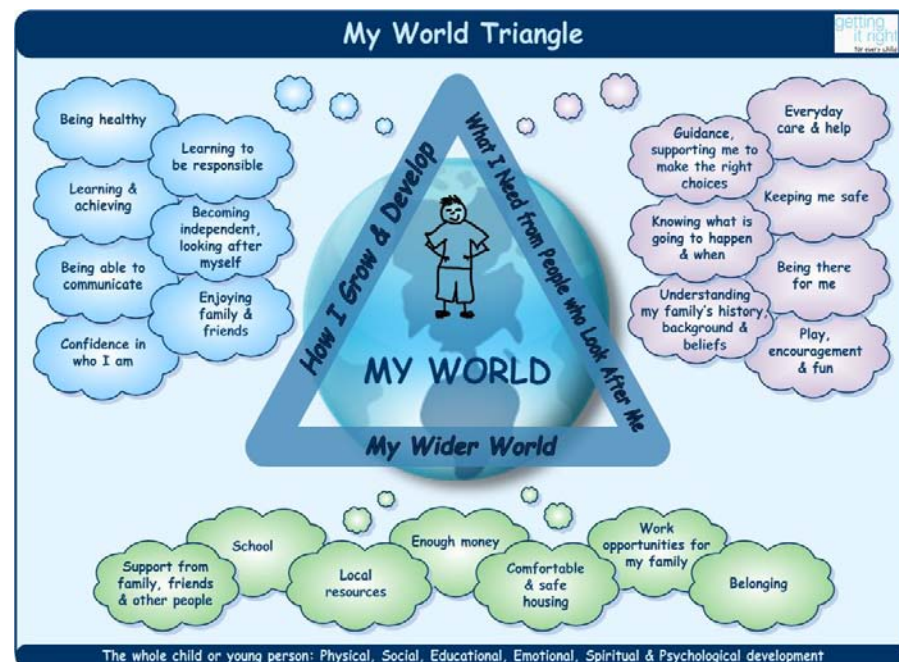
Name of other people/contact details

Details of meeting	
Date	
Time	
Venue	

Other important information



Guidance for Young People about 'Getting it Right for Every Child' and the Integrated Assessment Framework



Getting it Right for Every Child (GIRFEC)

We want all Scotland's children and young people to be:

Successful Learners
Confident Individuals
Effective Contributors
Responsible Citizens

To make this happen children and young people need to be:

Safe **Healthy** **Achieving** **Nurtured**
Active **Respected** **Responsible** **Included**

These are the wellbeing indicators and you might hear people calling them **SHANARRI** for short.

The Integrated Assessment Framework

An Integrated Assessment has been requested and the details are provided in your letter.

The Lead Professional

The Lead Professional is there to support you and can talk to you about:

- What this means
- Consent for sharing information about you
- What is the assessment that has been asked for
- Who will be involved or invited
- Who can help you
- How you can have your say

It is really important that you have the chance to give your views. You can ask your parents/carers or an adult of your choice to support you.

'My World Triangle'

The 'My World Triangle' is used by all the people who will take part in the assessment or meeting. It helps them to see what things are going well and understand some of the difficulties that you are having.

The areas on the triangle are there as a guide but they don't all need to be looked at. That's why it is really important you are involved and say what is important to you. Think about:

How I Grow and Develop

- Being healthy
- Learning to be responsible
- Learning and achieving
- Becoming independent, looking after myself
- Being able to communicate
- Enjoying family and friends
- Confident in who I am

What I need from the People Who Look After Me

- Everyday care and help
- Guidance supporting me to make the right choices
- Keeping me safe
- Knowing what is going to happen and when
- Being there for me
- Understanding my family's history, background and beliefs
- Play encouragement and fun

My Wider World

- Support from family, friends and other people
- School
- Local resources
- Enough money
- Comfortable and safe housing
- Work opportunities for my family
- Belonging