

Presentation to Child Protection Committee

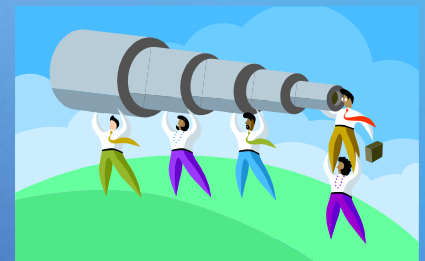
**Service Redesign
Children and Families
Celia Gray Senior Manager**

Purpose of Session

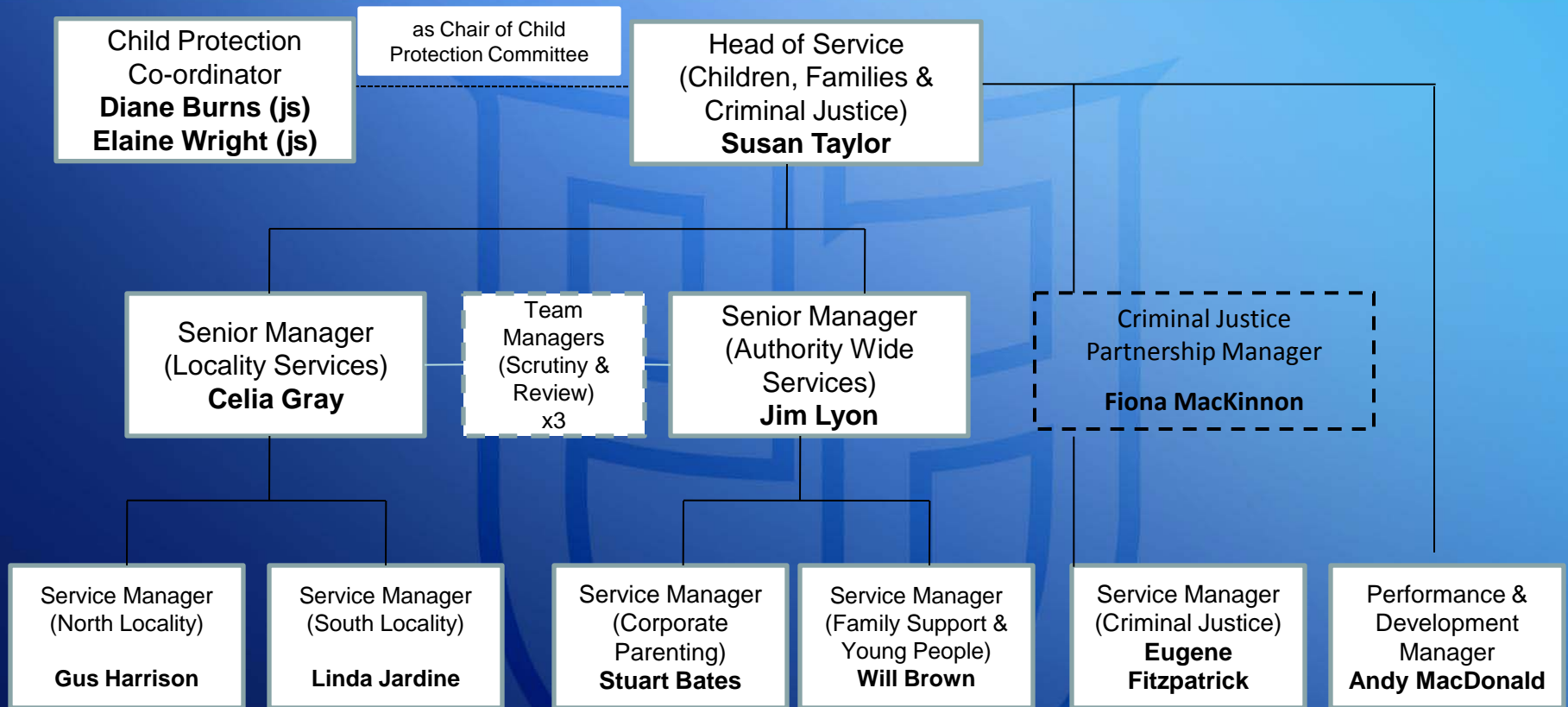
- Share with partners work taking place in Children and Families to improve outcomes for children and young people
- Consider *Our Vision* to deliver the redesign of children's services
- Who's Who: *Our Management Structure*
- *Our Model for service delivery*
- How we deliver our service: Redesigned posts
- Key achievements to date

OUR VISION

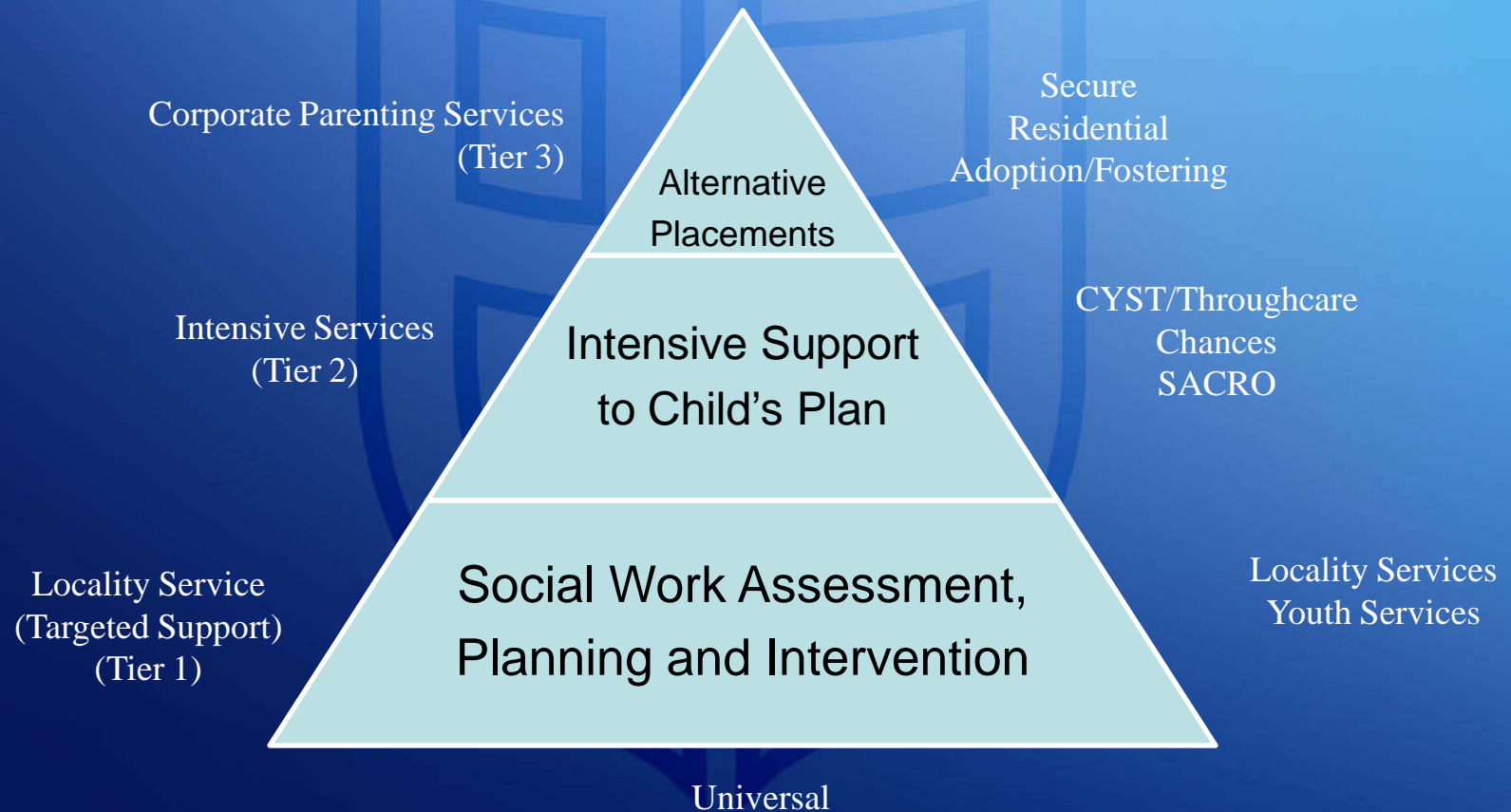
- All Citizens in East Ayrshire
- National vision for children
- Social Work vision
- Children in Need of Protection



Department of Educational and Social Services Children, Families & Criminal Justice Services – Management Structure



HOW WE WERE ORGANISED?



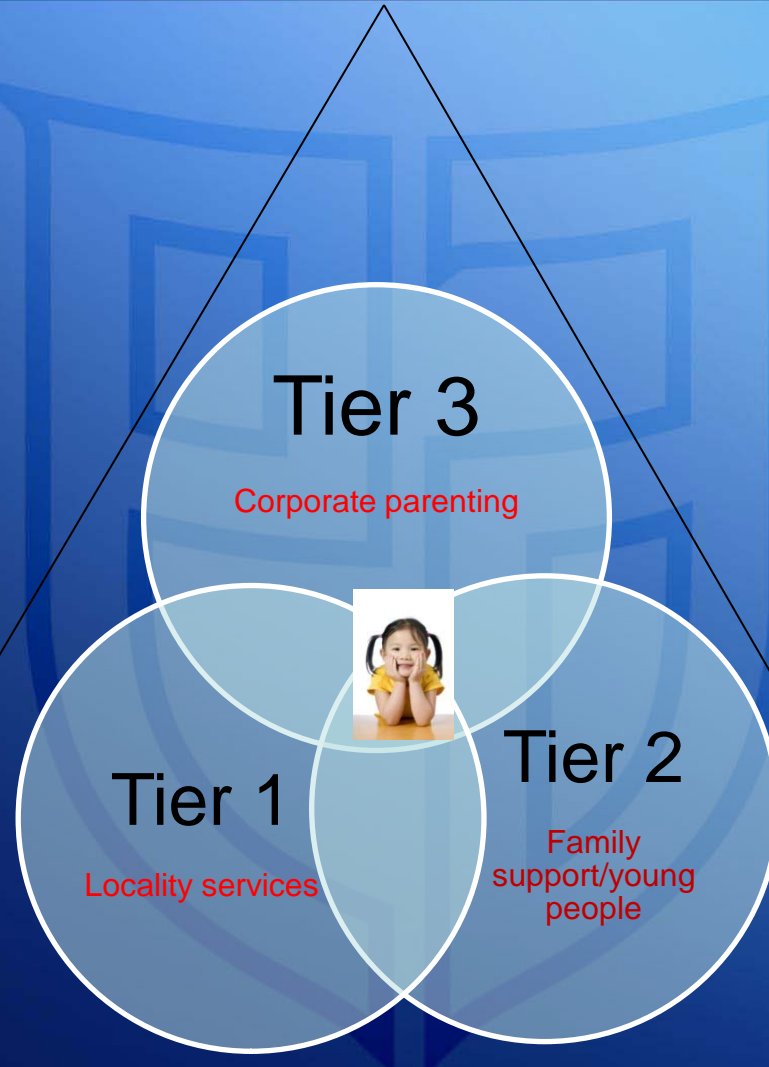
NEW SERVICE DESIGN

- **Child at Centre**
- **Team built around child**
- **One assessment/one plan**
- **Lead professional**
- **Assist families to change
(Tools/Approaches/Intervention)**



Our New Model

- Respond to demand
- Lead Professional
- 3 defined roles
- Keeping children at home
- Improving outcomes



- Child's journey - 0 to 21 years
- Flexible working hours
- Team around child
- 1 child - 1 assessment - 1 plan

Tier 1 Locality Services-Assessment, planning and intervention

- Lead professional identified
- Assessment of strengths, needs, risks and capacity (IRT)
- Development of a child's plan
- Multi-agency plan with specific role and tasks for social work intervention
- Management of identified risks



Tier 2 Intensive Services

Family support and young people

- Support to prevent young person being accommodated, or return home.
- Support to young people leaving care or children with Additional support needs
- Support the child's plan providing a range of direct interventions
- Flexible service 24/7

Tier 3 Corporate parenting

- Support to young people looked after and accommodated in children's houses, carers placements, residential schools and secure accommodation
- Support to foster, short break, and adoptive parents
- Recruitment campaigns for carers
- Preparatory and post-placement support for carers

Lead Professional Role

Qualified Social Worker – **Lead Professional**

- Professionally qualified

Para Professional (Family Support Practitioner) – **Lead Professional**

- Qualified to degree level (relevant)

Support Role

Family Support Worker

Family Support Assistant

Key Achievements

- **SWIA positive follow up inspection**
- **Increased performance in key areas**
- **Culture change**
- **Downward trend in LAAC population**
- **Residential worker of the year award**
- **Positive inspection of Children's Houses**
- **Successful recruitment campaign**

IMPROVING OUTCOMES FOR OUR CHILDREN AND YOUNG PEOPLE

