

EAST AYRSHIRE

CHIEF OFFICERS GROUP (CHILD, ADULT AND PUBLIC PROTECTION)

**ADULT PROTECTION COMMITTEE REPORTING AND REFERRAL ACTIVITY
PROGRESS UPDATE**

21 DECEMBER 2010

Report by the Adult Protection Coordinator-Restricted Access

1. PURPOSE OF REPORT

- 1.1 To provide the Chief Officers Group (Child, adult and public protection) with an update on multi agency progress in adult at risk reporting statistics and multi-agency referral systems within East Ayrshire in the first reporting quarter following the Adult Protection Committee (APC) Chairs Biennial Report to Scottish Ministers at the end of October 2010.
- 1.2 Appendix 2 of this report is an anonymised case example however is provided for the purpose of raising awareness amongst partners regarding the importance of collaborative practice and is not intended for any other purpose at this time therefore access is restricted to the APC and Chief Officers.

2. EAST AYRSHIRE SUMMARY OF REPORTING ACTIVITY AND TRENDS

- 2.1 A total of 73 reports of adults at risk have been received in the last three months. A breakdown of these statistics is detailed further in Appendix 1.
- 2.2 In terms of local trends the points below provide some general analysis for noting;
 - Police remain the highest source of referral this quarter at 55% this quarter which is a consistent trend across Ayrshire and referrals from the NHS remains relatively low at 5% compared to 12% from independent providers. The training coordinator has prioritized partnership working with health colleagues to consider and increase knowledge of procedures across health partners.
 - There is almost a third increase in referrals at the same quarter last year and just under a third more referrals from the last reporting period. If this increase continues which is higher than the estimated 20% growth in referrals there are concerns regarding the impact of this on workforce sustainability and local practice due to the high demand.
 - The three highest categories of harm reported are physical, emotional and financial. The Training Coordinator has prioritized the Department of Work

and Pensions (DWP) for briefings in order to highlight the aspects of financial harm.

- 41% of referrals are aged 65-85yrs plus, there has been a high level of awareness raising around adult protection at older peoples events over recent months which may also be a contributing factor.
- The Adult Protection Committee will be undertaking more detailed analysis around the situations where outcomes of referrals are awaited (cross refer to Appendix 1 Table 15) to promote further understanding.

3. WEST OF SCOTLAND TRENDS

3.1 The challenges in benchmarking activity with comparator authorities due to the lack of formal standard performance frameworks and the ongoing debate of agencies in their understanding of thresholds for reporting incidents has been raised by West of Scotland ASAP Lead Officers at a recent Scottish Government Leads event for future consideration.

4. PROTECTION ORDER ACTIVITY

4.1 There are still currently 5 Banning orders in East Ayrshire and all have a POA.

4.2 It should be noted that there remains a lot of activity around the consideration of protection orders and Appendix 2 provides an example where the reporting of an adult at risk referral and active consideration led to the successful protection of an adult who was believed to be the subject of harm in an environment of gender based violence. This example clearly demonstrates the crucial nature of a partnership approach and the role of the NHS in recognizing harm.

5. RESOURCE IMPLICATIONS

Through audit of practice we have established that each referral results in an average of 9 hours intervention where referrals resulted in no further action and 33 hours when full procedures applied in the assessment phase for Social Work Services. To date we have not directed ASP monies towards this pressure. If the trends are sustained consideration of redirection of resources will be required.

6. RECOMMENDATIONS

6.1 The Adult Protection Committee is asked to;

- (i) Note the adult at risk referral activity ,trends and workforce implications in terms of sustainability in the first quarter of this year 3; and
- (ii) otherwise note the contents of this report

Donna Sinfioriani
Adult Protection Co-ordinator

DS/DS
29th November 2010

Implementation Officer:- EDDIE FRASER

Any person wishing further information on the contents of this report please contact Donna Sinfioriani, Adult Protection Coordinator, Community Care (Adults) on (01563) 553559.

Table 1.35 Local Authority Comparison of Annual referrals by month

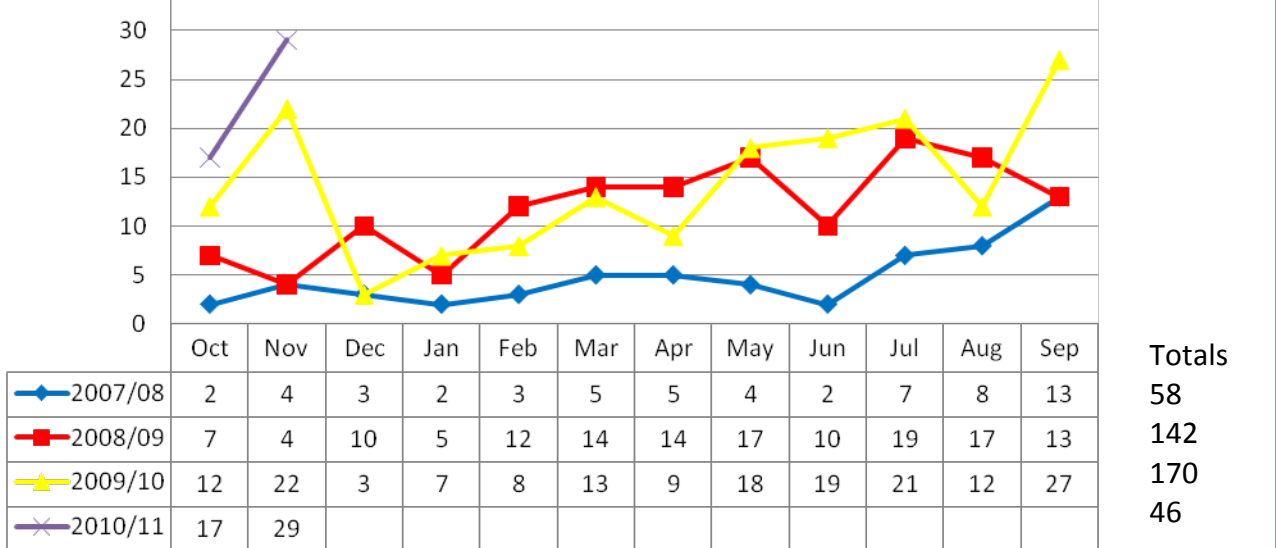


Table 2. Breakdown of referrals by Location and Gender - Quarterly Analysis - total 73

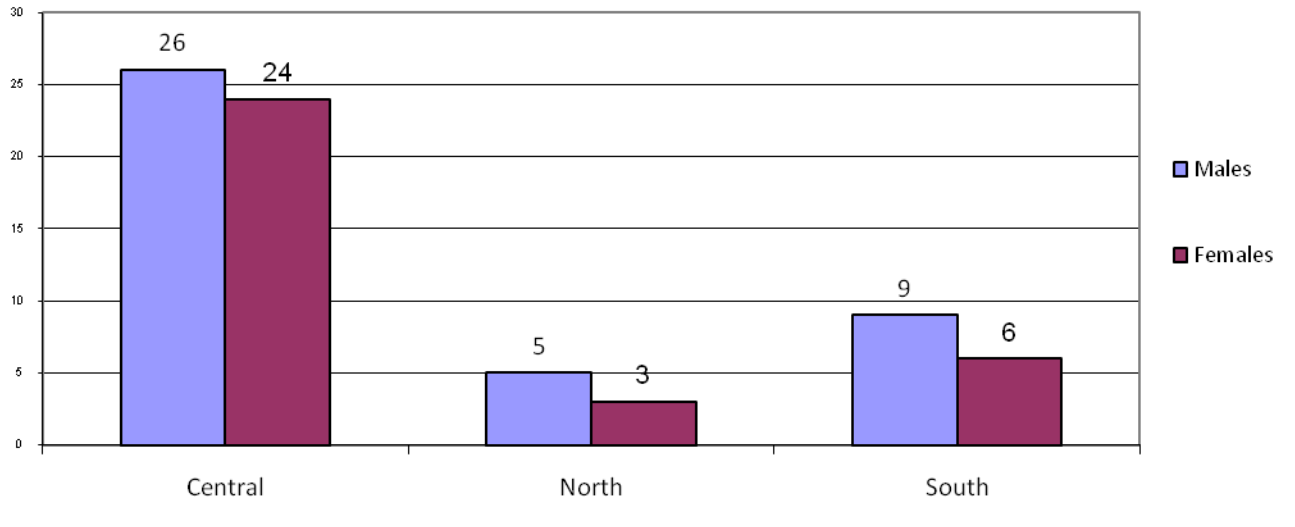
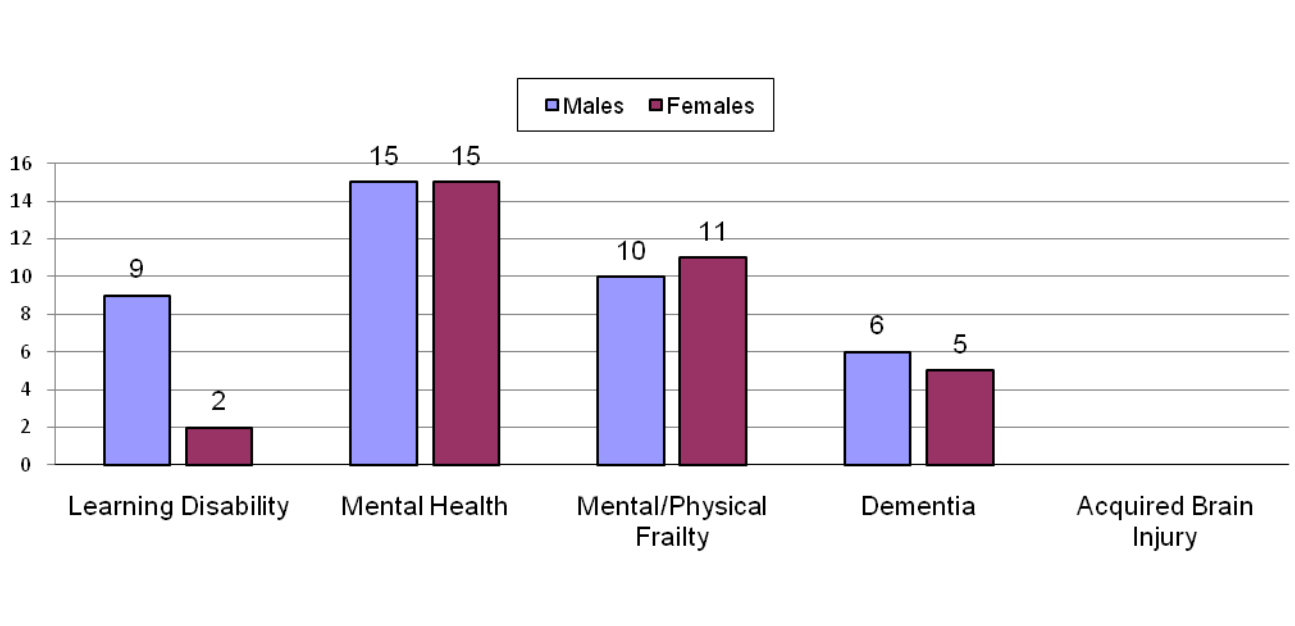
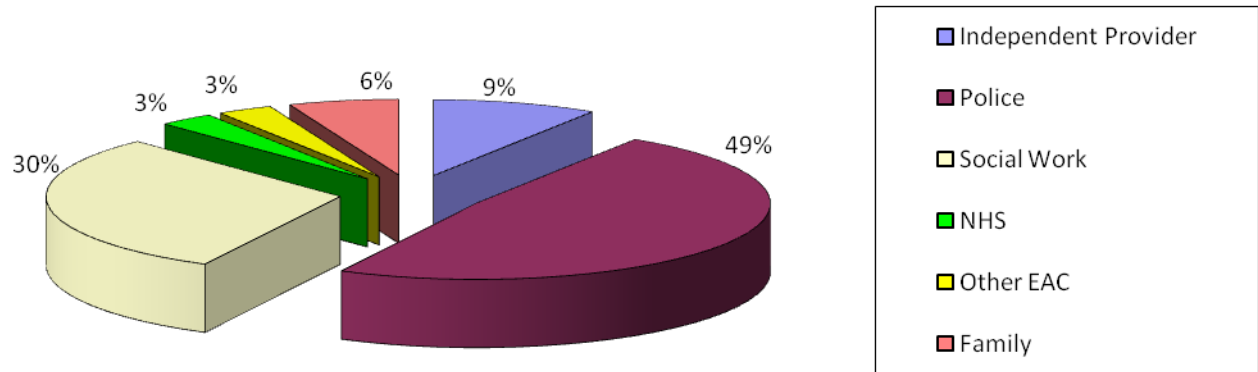


Table 3. Client Groups by Gender - Sept, Oct, Nov- total 73



**Table 4. Breakdown of source of Quarterly Female Referrals as a %
Sept, Oct, Nov 2010. total - 33**



**Table 5. Breakdown of source of Quarterly Male Referrals as % Sept,
Oct, Nov 2010. total - 40**

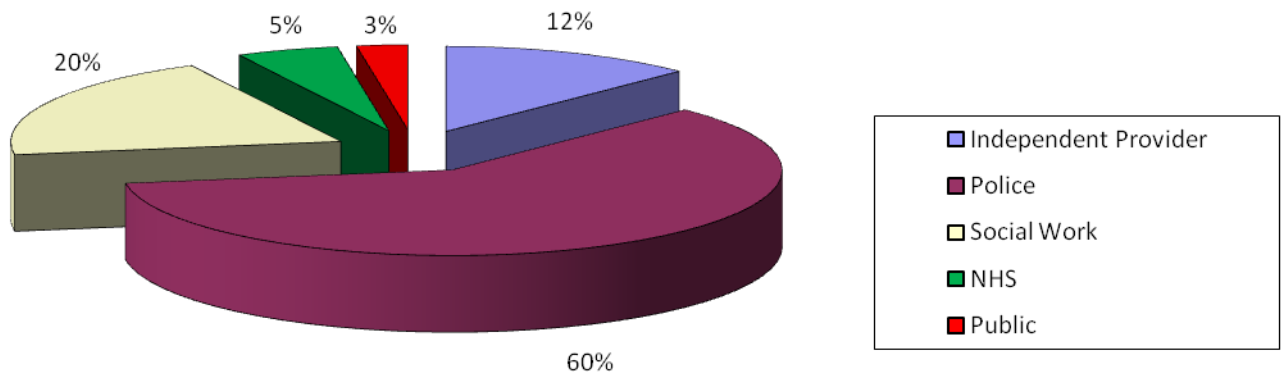


Table 6.

Breakdown of Quarterly Referrals by Category of Harm and Gender Sept, Oct, Nov 2010 - total 73

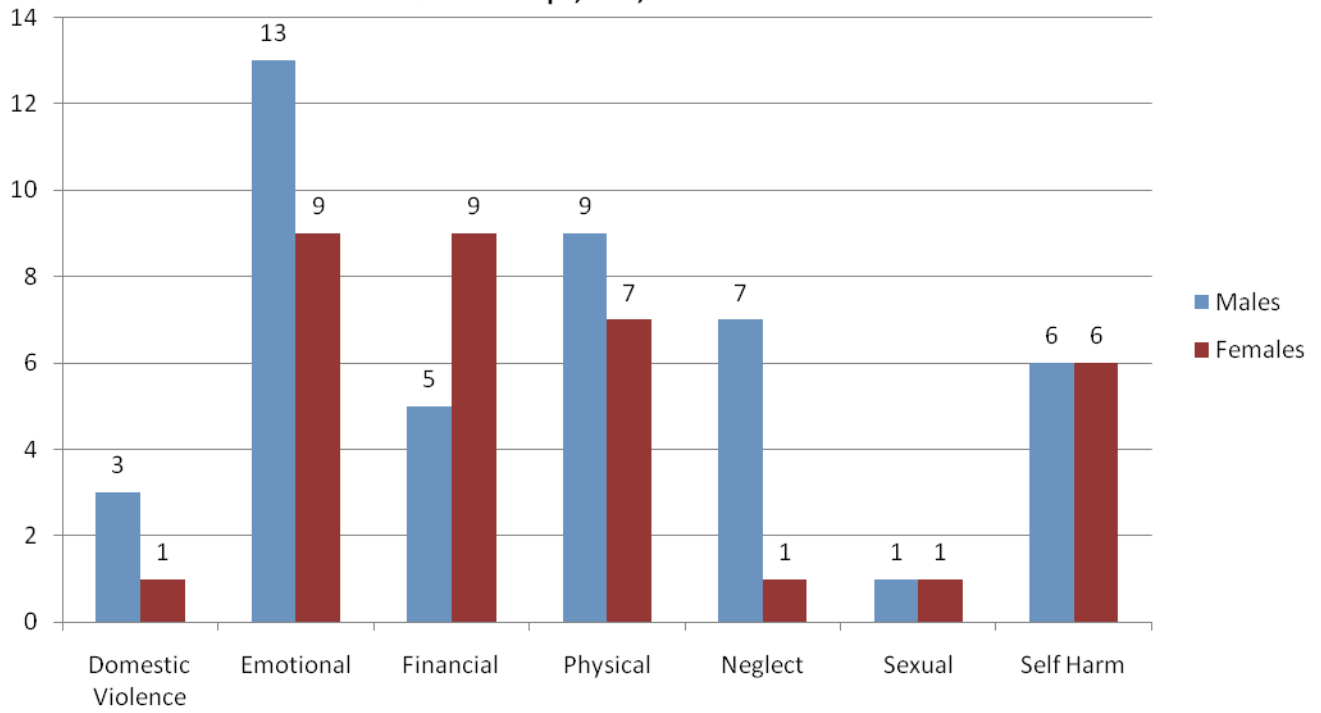
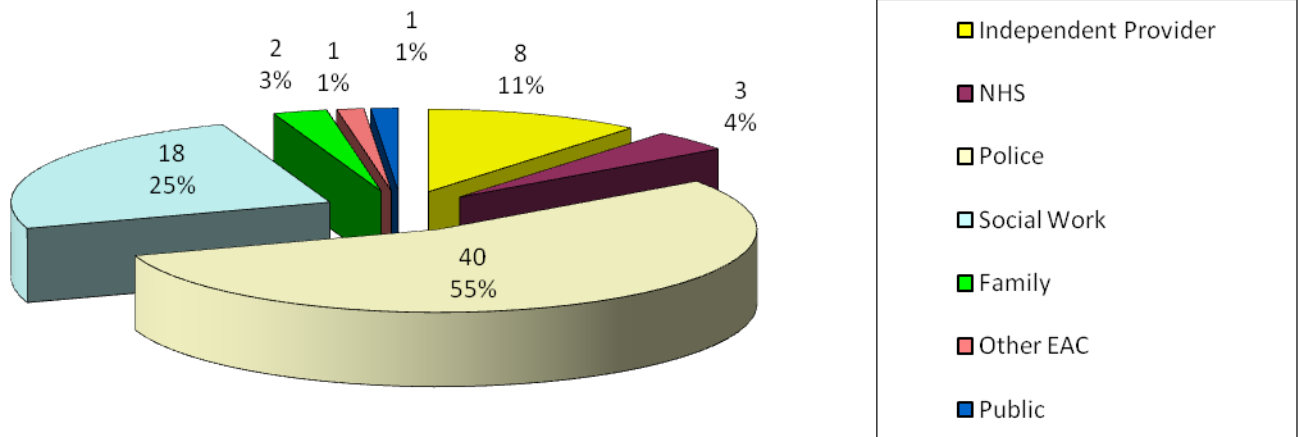


Table 7.

Breakdown of Quarterly Referrals by agency. total - 73



**Table 8. Breakdown of Quarterly Referrals by Category of Harm and Gender
Sept, Oct, Nov 2010 - total 73**

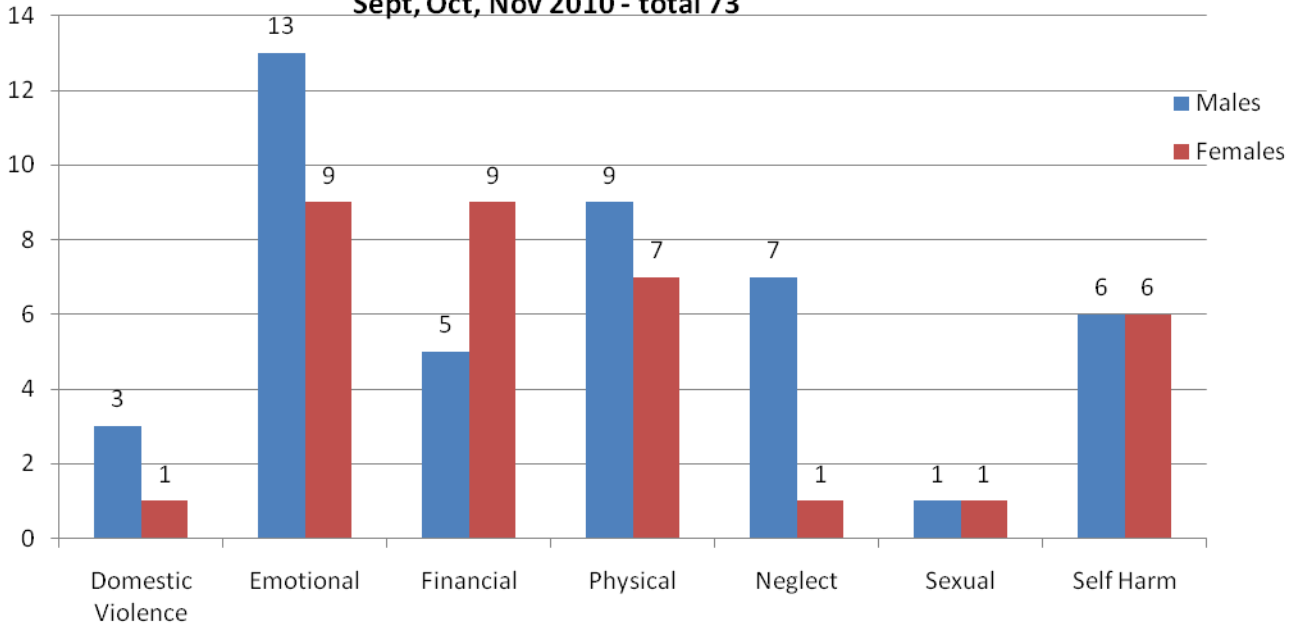


Table 9. Breakdown of total Quarterly Referrals by Age Group and Category of Harm - Sept, Oct, Nov 2010

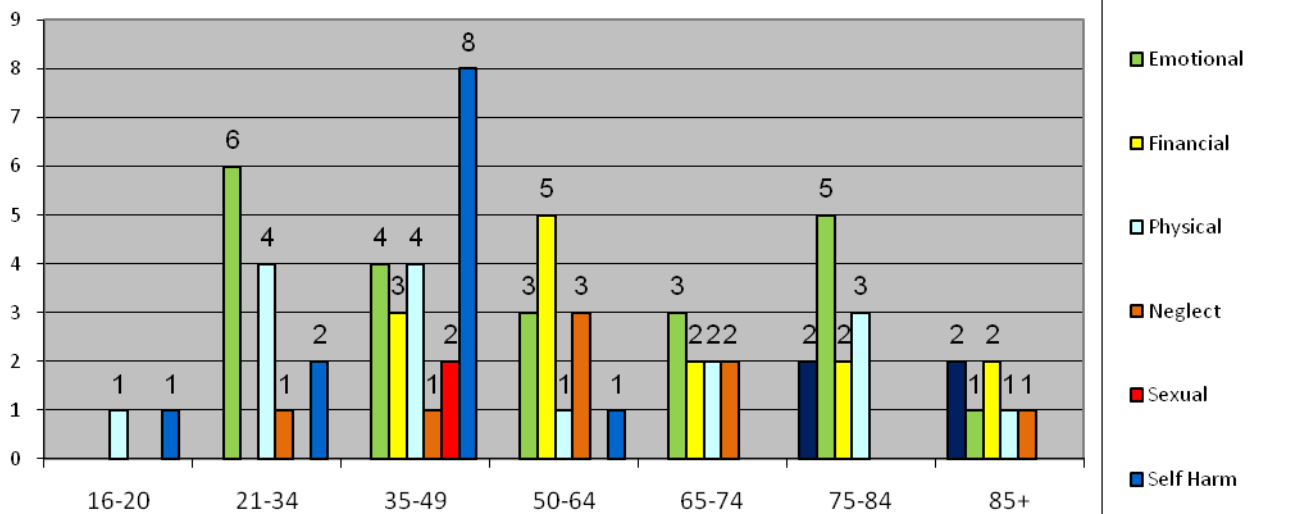


Table 10.

Breakdown of Quarterly Referrals by age group as a % of total referrals Sept, Oct, Nov 2010 total - 73

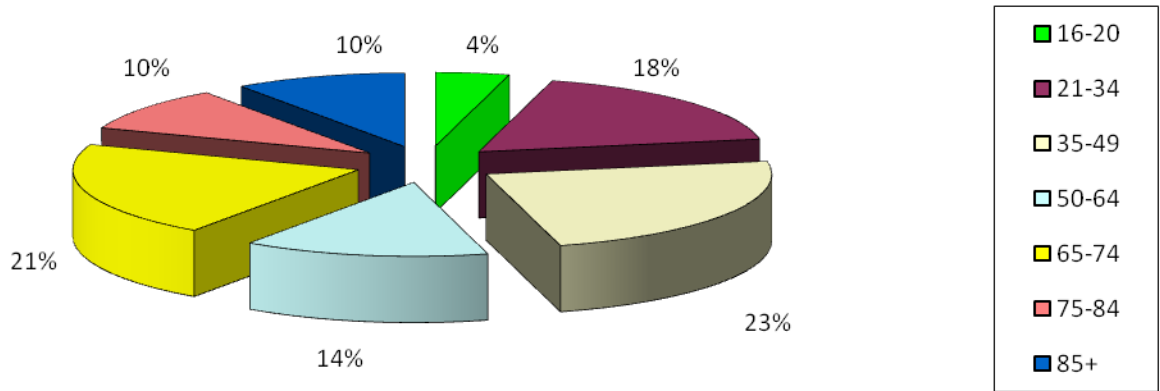


Table 11.

Breakdown of all Quarterly Referrals by Criteria Group total 73

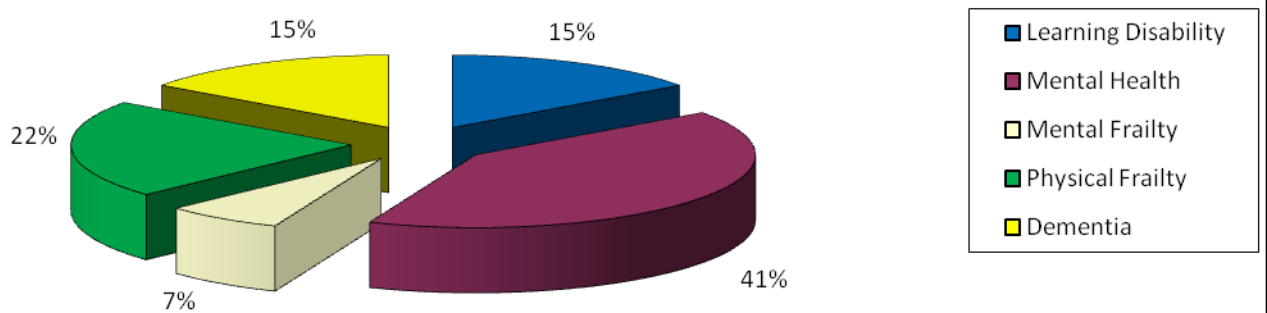


Table 12. Referrals by Age group and Gender - total 73

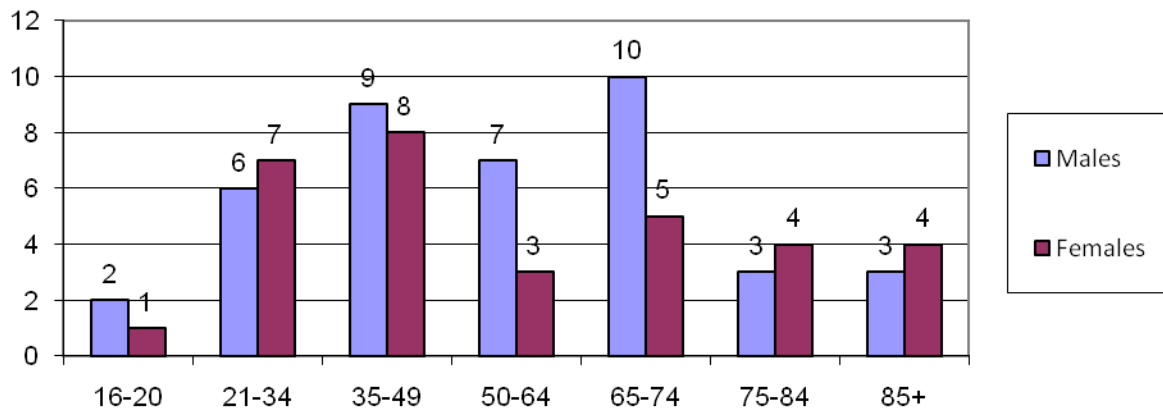


Table 13. Client Groups by Gender - Sept, Oct, Nov 2010 - total 73

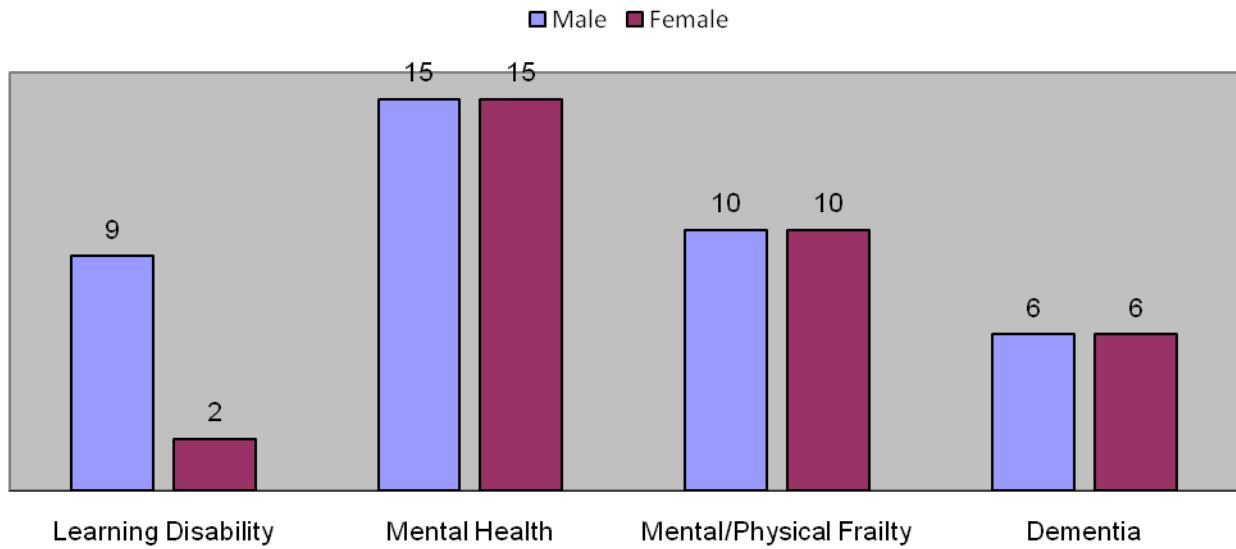


Table 14.

Status of Referrals for Sept, Oct, Nov 2010 total - 73

■ Known (continuous input) ■ Known (sporadic input) ■ Not Known

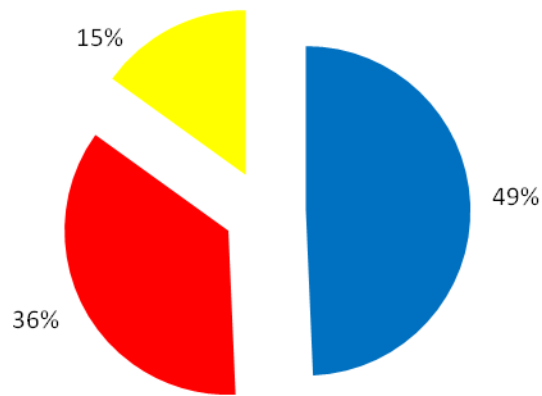


Table 15.

Quarterly Breakdown of Outcomes
Sept, Oct, Nov 2010 - total 73

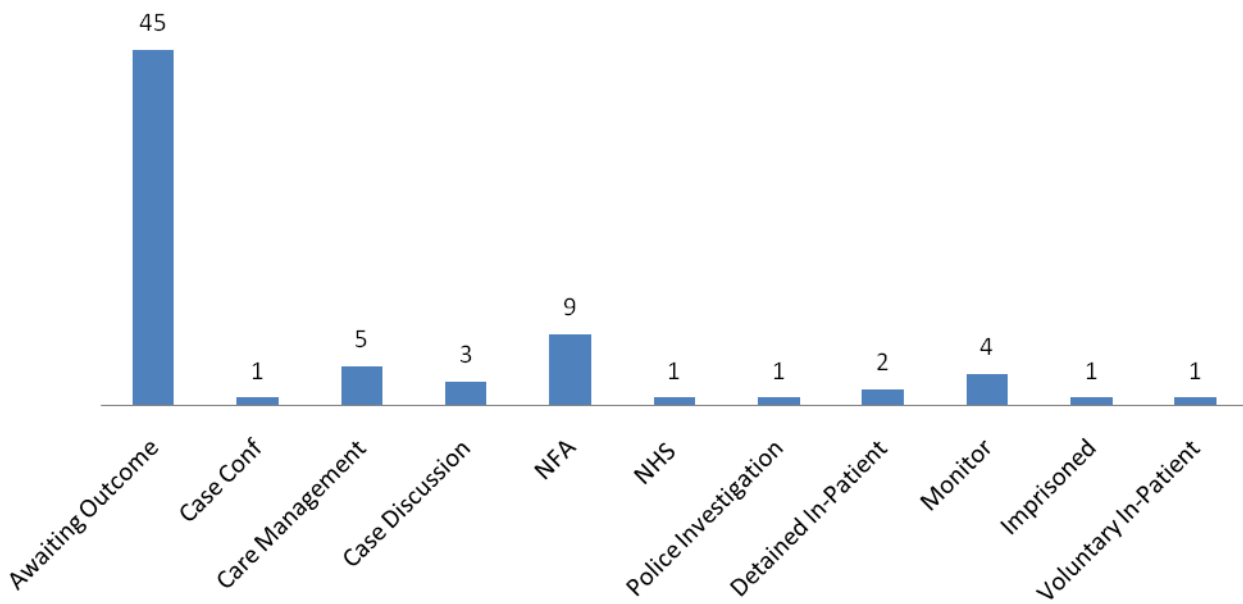
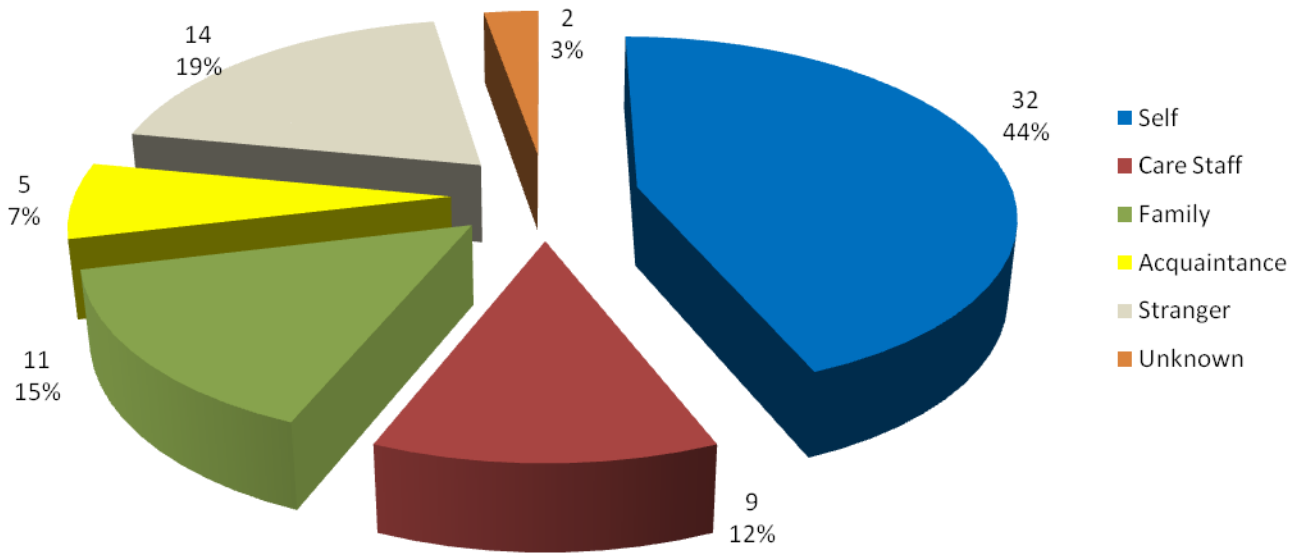


Table 16.

Source of harm for all Referrals - Sept,Oct,Nov 2010



APPENDIX 2

APPENDIX 2 CONTAINS CONFIDENTIAL INFORMATION AND IS THEREFORE
NOT AVAILABLE