

EAST AYRSHIRE

CHIEF OFFICERS GROUP (CHILD, ADULT AND PUBLIC PROTECTION)

**ADULT PROTECTION COMMITTEE REPORTING AND REFERRAL ACTIVITY
PROGRESS UPDATE**

21 JUNE 2011

Report by the Adult Protection Committee Independent Chair

1. PURPOSE OF REPORT

- 1.1 To provide the Chief Officers Group (Child, Adult and Public Protection) COG with an update on multi agency progress in adult at risk reporting statistics and multi-agency referral systems within East Ayrshire since the last report to Chief Officers on the 21 December 2010.

2. EAST AYRSHIRE SUMMARY OF REPORTING ACTIVITY AND TRENDS

- 2.1 A total of **125** reports of adults at risk have been received in Year three since the implementation of the Adult Support and Protection (Scot) Act 2007. In the second reporting period since the last report to COG there have been a total of **78** reports of an adult at risk of harm. A breakdown of these six monthly statistics is detailed further in Appendix 1.
- 2.2 In terms of local trends the points below provide some general analysis for noting;
- The reporting of adults at risk continues to demonstrate consistent growth in terms of a 36% increase in referrals from the same period last year (year two).
 - More men (60%) than women (40%) were referred; the national trend according to an overview of all Scottish Government Biennial Reports is women (55%) and Men (45%). In East Ayrshire this variable could be partially attributed to the increasing number of self harm referrals (22%) which are over 50% more for males. This is often associated with alcohol and drug misuse and in males. This trend is recognised nationally and a National Short life working Group to explore this further has been established, locally a Pan Ayrshire Adult Protection Committee (APC) development seminar to explore multi agency solutions to supporting these adults is being held on 29 June 2011 in recognition of a trend common across Ayrshire.
 - The highest client group for referrals is Mental Health (59%) with Mental and Physical Frailty second (28%). Further analysis is being undertaken to explore whether the Mental Health referrals relate to those with a recognized Mental Disorder. There may be a number of referrals associated with the aforementioned increased Self Harm which also has challenges associated with intoxication as it is difficult to assess whether mental health is the presenting issue. There is also 30% of referrals associated with those over 65 years and given the three highest categories of harm are psychological

(40%), Self Harm (22%) and Financial (19%) it is not surprising that the impact on individuals mental wellbeing is adversely affected.

- The main statutory activity is around the local authority responding to inquiries and investigations with 83% of referrals requiring no further ongoing action under formal adult protection procedures however as table 11 shows only 23% required no further input from Social Work and 78% had some degree of protection concerns in need of support. This could be indicative that the least restrictive intervention is being applied which is commensurate with the legislative principles.
- Intervention using statutory Protection Orders designed to intervene when serious harm has occurred remains relatively low (5 banning orders) which was anticipated . Nationally there were 40 Banning Orders.
- Social Work as a source of referral has reported 10% of adults at risk which appears relatively low however as table 8 evidences 82% of all referrals were already provided with input from Social Work which may account for the low referral rate. There are clear implications for the sustainability of front line services to respond to the increased demand on the Community Care Social Work teams. A report and recommendation to utilize the current budgetary allocation to employ two additional frontline Community Care Social Workers to strengthen frontline services was submitted and approved at Social Work Cabinet on 1st June 2011 to address this.
- The Police at 87% remain the highest recorded source of referral. However a further analysis of the original source in table 5 of Appendix 1 has identified that 63% of referrals to police are coming from members of the community including the adults themselves.
- Referrals from the NHS (8%) remain low which has been identified as a national trend. There has been increased training activity across NHS services to raise awareness and a series of presentations to Hospital Consultants and General Practices is currently underway to ensure the low rates are not associated with a lack of awareness of the legislative duties and /or mechanisms to seek advice or report concerns.

3. NATIONAL TRENDS

3.1 The Office of the Public Guardian recognised the national trend relating to financial harm and as such offered a series of multi agency workshops to provide information for practitioners on the provisions of the Adults with Incapacity Act 2000 to increase knowledge of potential safeguards for adults who may be eligible for this. East Ayrshire Adult Protection Team supported this initiative through the coordination and funding venues for two workshops held on 20th April 2011.

3.2 The Association of Directors of Social Work (ADSW) have developed an Adult Support and Protection Subgroup endorsed and supported by Scottish Government to identify common themes and develop consistent practice. The East Ayrshire Adult Protection Coordinator represents the APC on this group and the three priorities for the focus of work over the next year will be to develop National Standards for Adult Protection, develop an Outcomes Framework for

Adult Protection and consider ways to further enhance partnership working with NHS Partners.

4. RECOMMENDATIONS

4.1 The Chief Officers Group (Child, Adult and Public Protection) is asked to;

- (i) Note the adult at risk referral activity ,trends and workforce implications and the redeployment of finances to strengthen frontline services in this respect; and
- (ii) Note the East Ayrshire Adult Protection Committees response to local and National trends; and
- (iii) otherwise note the contents of this report

Richard Stevens
Independent Chair of the Adult Protection Committee

DS/DS
14th June 2011

Implementation Officer: - EDDIE FRASER

Any person wishing further information on the contents of this report please contact Donna Sinforiani, Adult Protection Coordinator, Community Care (Adults) on (01563) 553559.

Table 1. Local Authority Comparison of Annual referrals by month

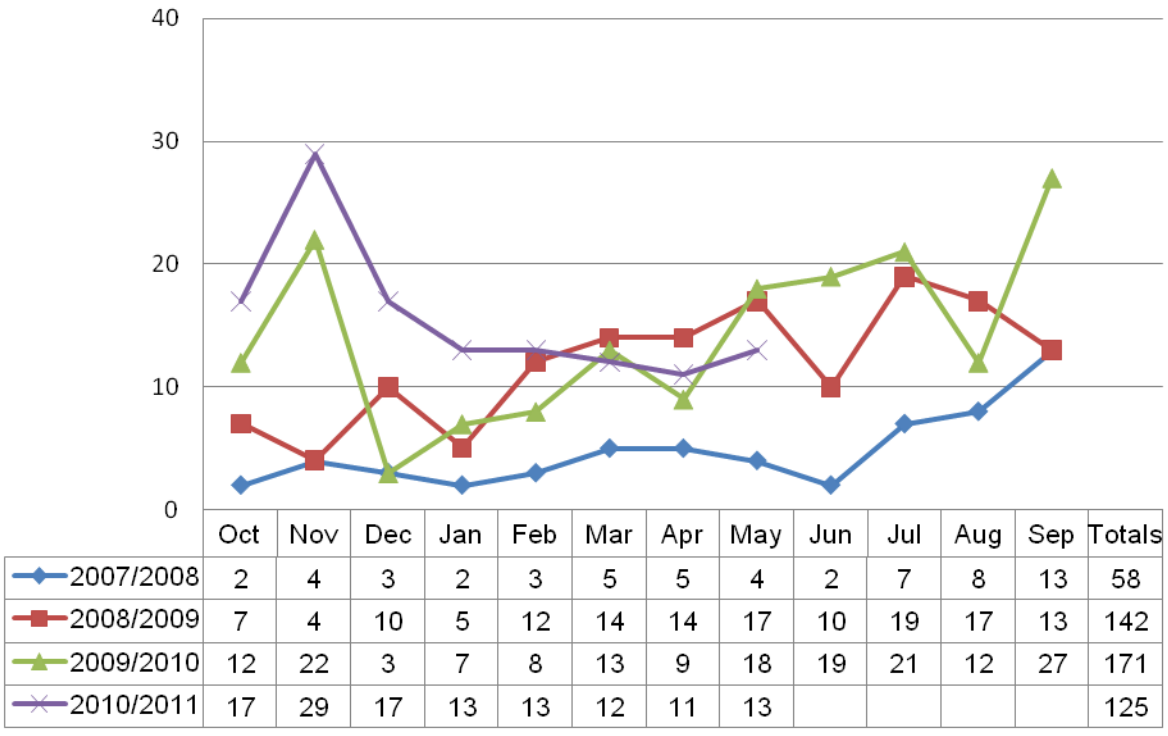


Table 2: Breakdown of total referrals (78) by Location and Gender - 1st December 2010 - 31st May 2011

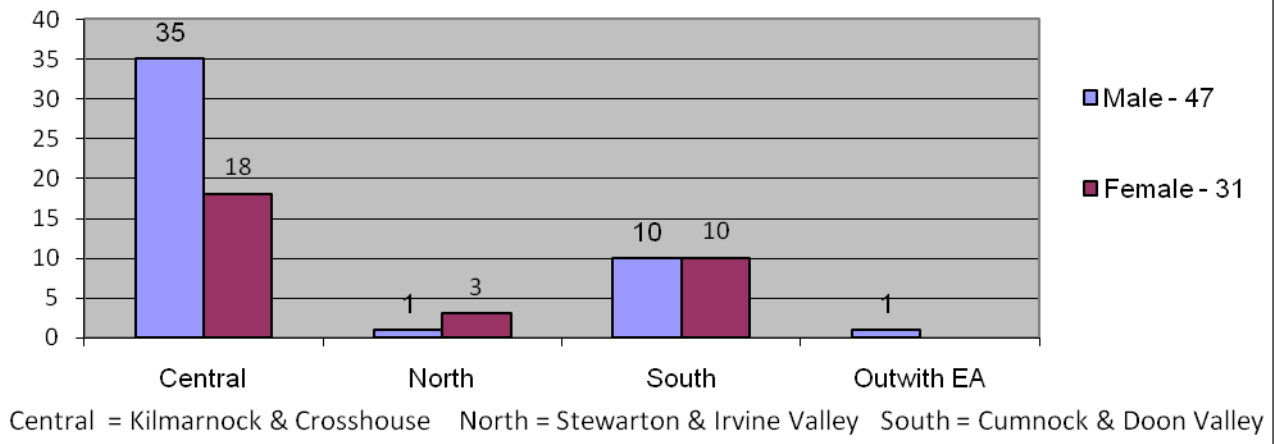


Table 3: Breakdown of total referrals (78) by Client Groups by Gender - 1st December 2010 - 31st May 2011

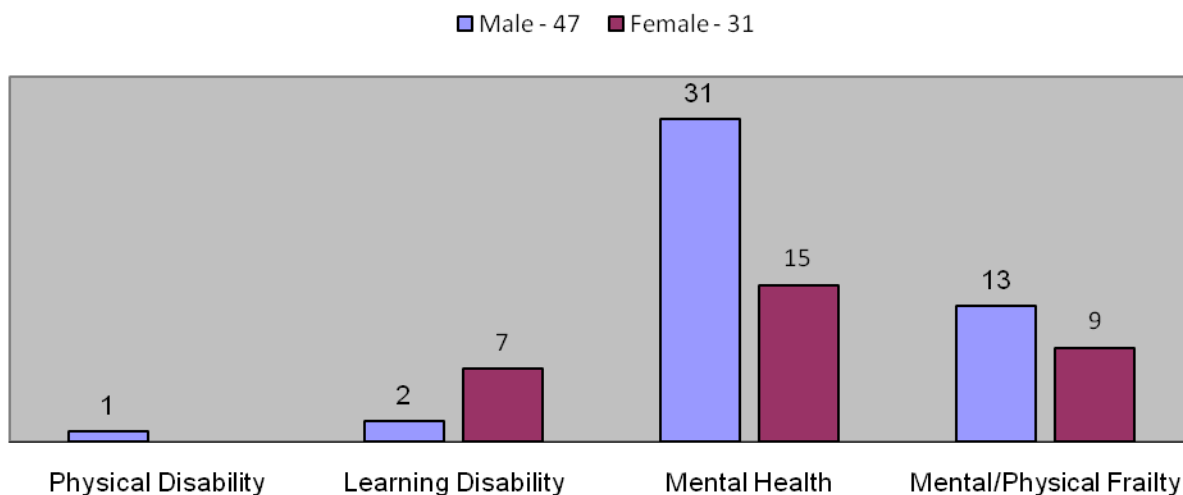


Table 4 Breakdown of total referrals (78) by Gender 1st December 2010 to 31st May 2011

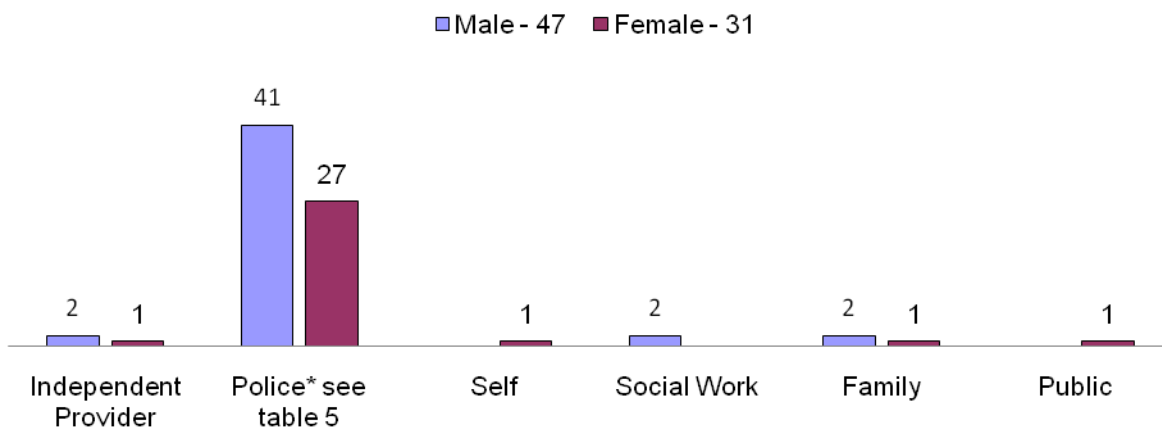
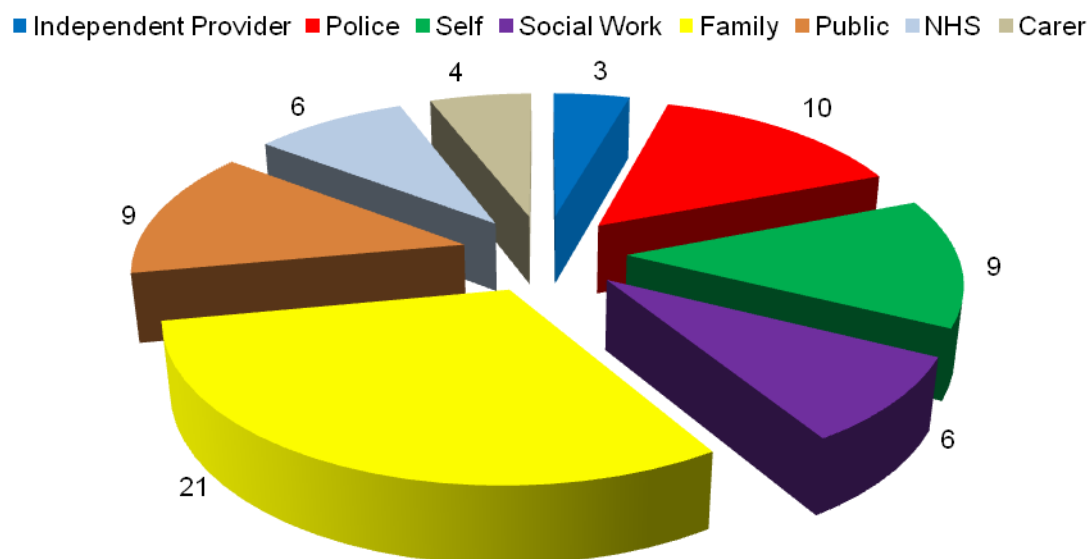


Table 5 Breakdown of (68) Police Referrals by Original Source 1st December 2010 to 31st May 2011



NHS = Ambulance Control/Crews

Table 6: Breakdown of total referrals (78) by Category of Harm by Gender - 1st December 2010 - 31st May 2011

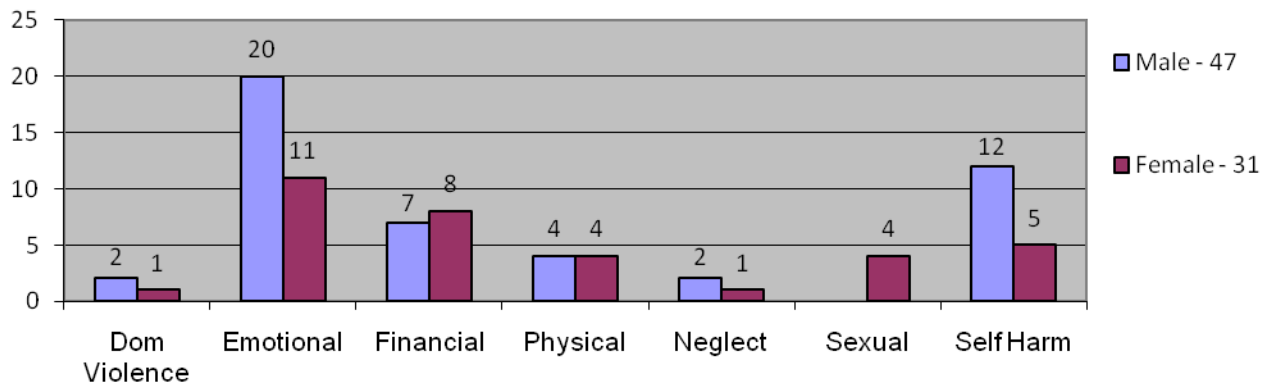


Table 7: Breakdown of total referrals (78) by Age Group as a % of total referrals
1st December 2010 - 31st May 2011

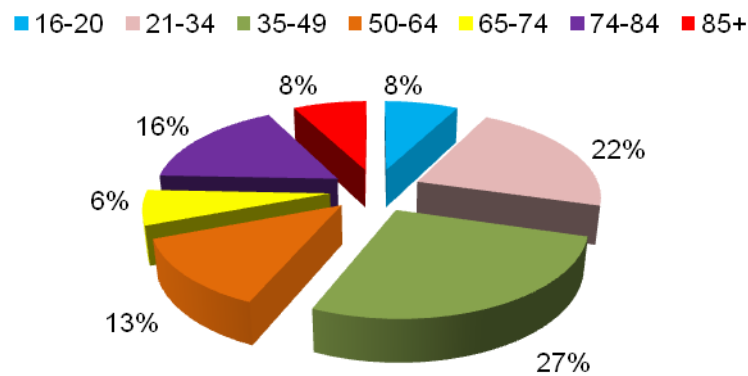


Table 8. Breakdown of status of total referrals (78)
1st December 2010 - 31st May 2011

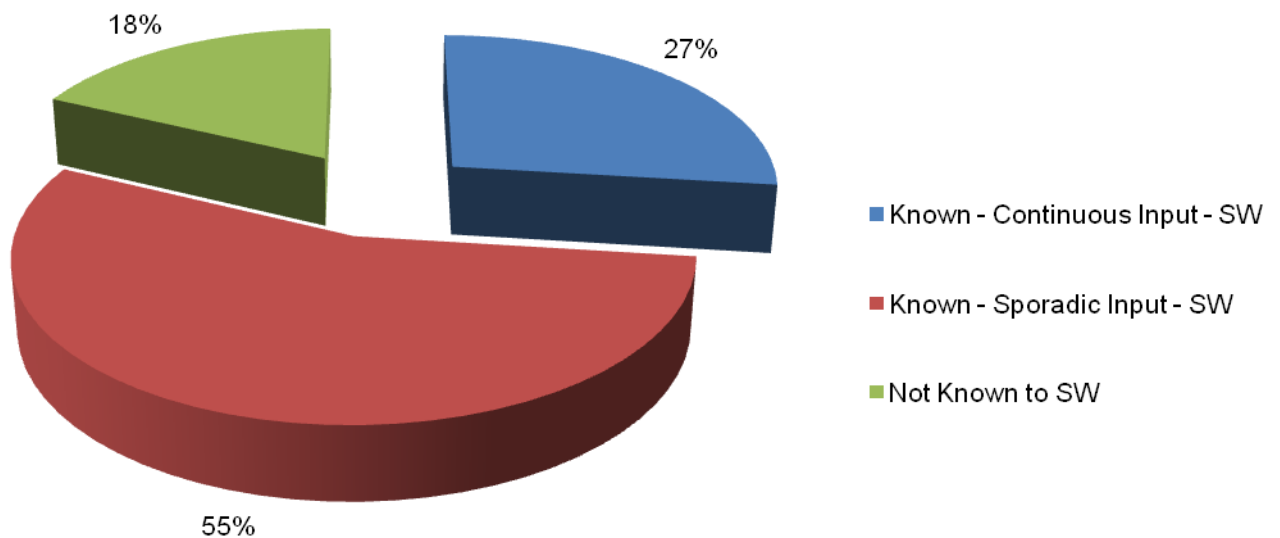


Table 9: Breakdown of total referrals (78) by Age group and Gender -
1st December 2010 -
31st May 2011

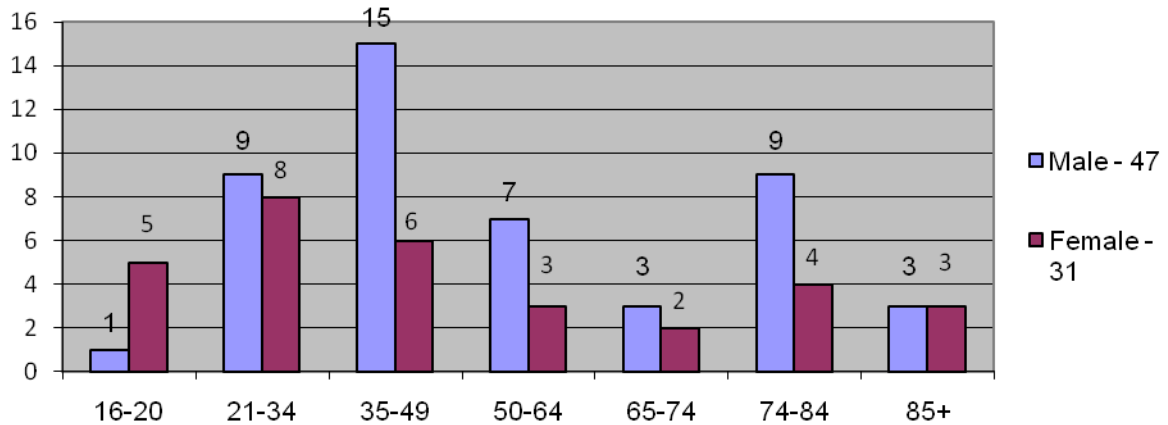


Table 10 Breakdown of total referrals (78) by Age Group and Category of Harm -
1st December 2010 to 31st May 2011

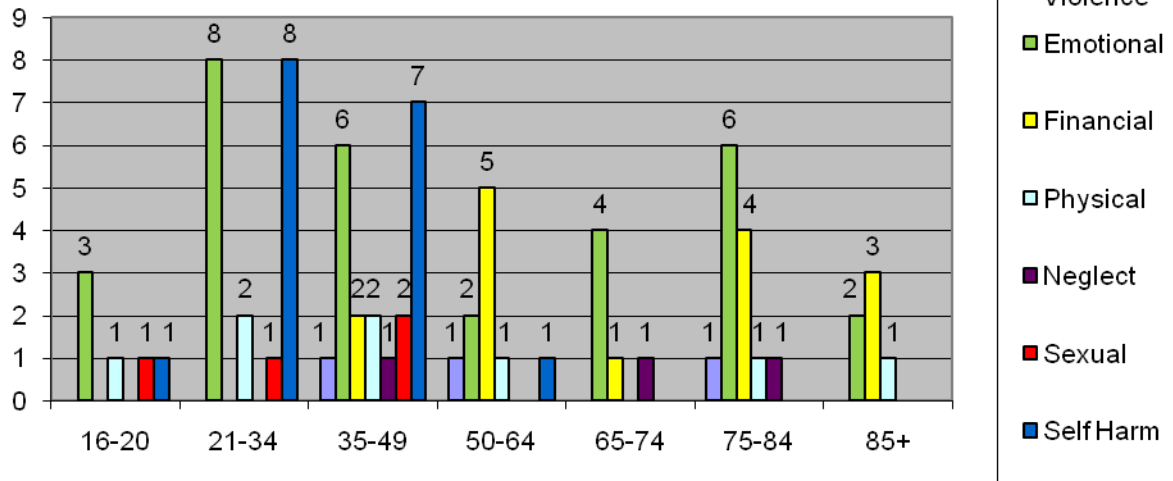


Table 11. Breakdown of total outcomes of referrals -
1st December 2010 - 31st May 2011

