

EAST AYRSHIRE
ADULT PROTECTION COMMITTEE
REPORTING AND REFERRAL ACTIVITY

17 MAY 2011
Report by the Adult Protection Coordinator

1. PURPOSE OF REPORT

- 1.1 To provide the Adult Protection Committee (APC) with an update on multi agency progress in adult at risk reporting statistics and multi-agency referral systems within East Ayrshire since the last report to Committee on the 23rd February 2011.

2 EAST AYRSHIRE REPORTING ACTIVITY AND TRENDS

- 2.1 A total number of 34 reports of adults at risk have been received since the last report to Committee on the 23rd February 2011 bringing the total number of referrals this year 3 to 114. A breakdown of these statistics is detailed further in Appendix 1.
- 2.2 Compared to the same period last year in year two this is a 21% increase and highlights the continued trend of increasing reports.
- 2.3 Of the **34** referrals received **15** required no further action and a breakdown of this is noted in Appendix 1
- 2.4 Of the **34** referrals, **7** resulted in a Case Conference, 3 are being Care Managed, 15 required No Further Action and the remaining 9 have still to be decided.
- 2.5 The Police continue to be the highest source of referral and that the trend of low reporting continues in terms of NHS Partners with the anomaly that the highest category of referrals relate to mental health. NHS attendance at awareness training has increased and will help to ensure NHS staff are aware of reporting procedures.

3. RECOMMENDATIONS

- 3.1 The Adult Protection Committee is asked to;
- (i) Note the adult at risk referral activity and analysis to date in year 3 of the implementation of the Adult Support and Protection(Scot) Act 2007; and
 - (ii) otherwise note the contents of this report

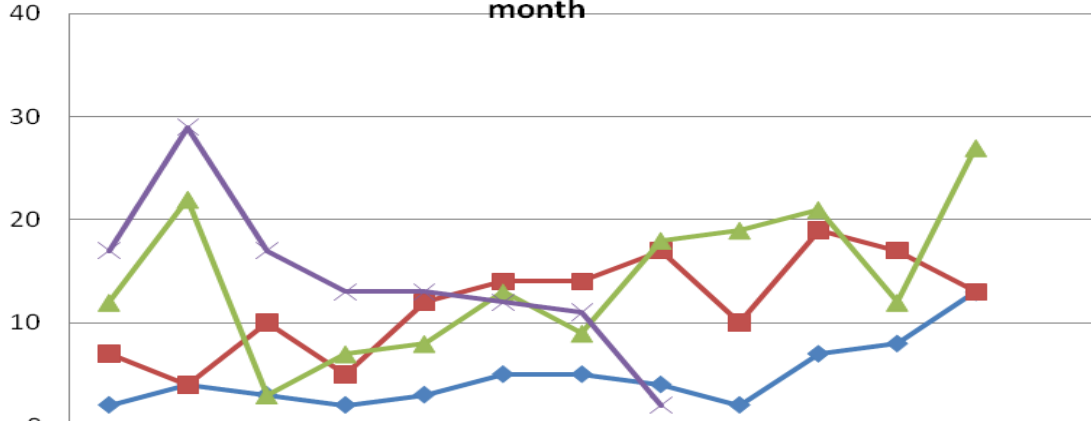
Donna Sinforiani
Adult Protection Co-ordinator

DS/IG
17 MAY 2011

Implementation Officer:- EDDIE FRASER

Any person wishing further information on the contents of this report please contact Donna Sinforiani, Adult Protection Coordinator, Community Care (Adults) on (01563) 553559.

Table 1. Local Authority Comparison of Annual referrals by month



	Oct	Nov	Dec	Jan	Feb	Mar	Apr	May	Jun	Jul	Aug	Sep	Totals
2007/2008	2	4	3	2	3	5	5	4	2	7	8	13	58
2008/2009	7	4	10	5	12	14	14	17	10	19	17	13	142
2009/2010	12	22	3	7	8	13	9	18	19	21	12	27	171
2010/2011	17	29	17	13	13	12	11	2					114

Table 2 Breakdown of referrals by Location and Gender - Feb 2011 - 6th May 2011 - total 34

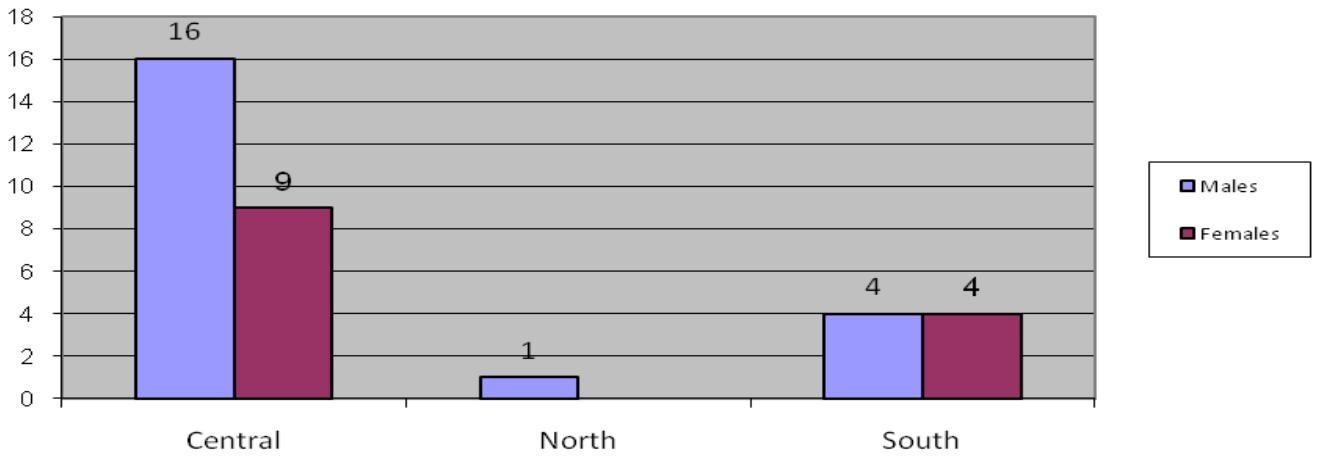


Table 3 Client Groups by Gender - Feb 2011 - 6th May 2011 - total 34

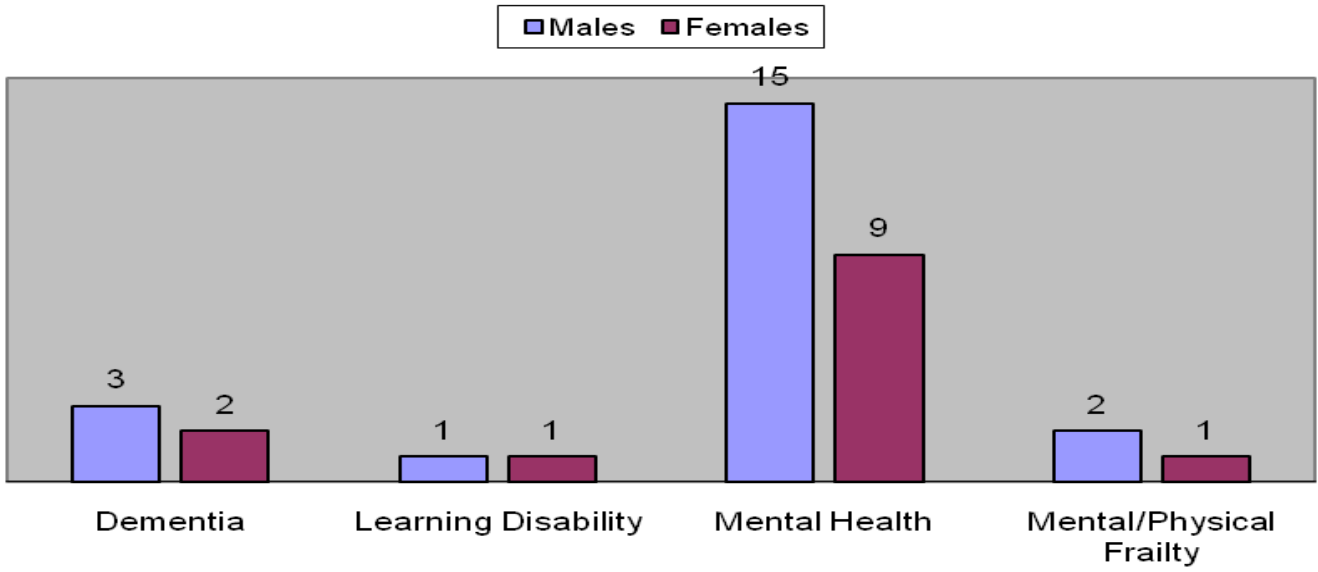


Table 4 Breakdown of Female referrals as % Feb 2011 to 6th May 2011 total - 13

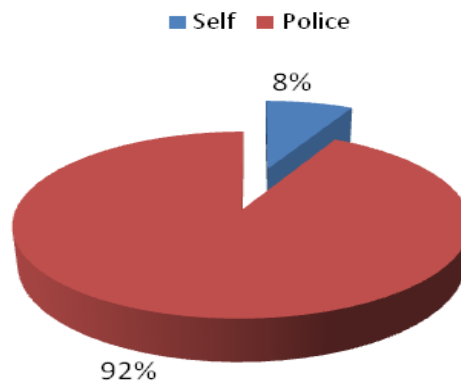


Table 5 Breakdown of Male referrals as % Feb 2011 to 6th May 2011 - total 21

■ Independent Provider ■ Police ■ Family ■ Social Work

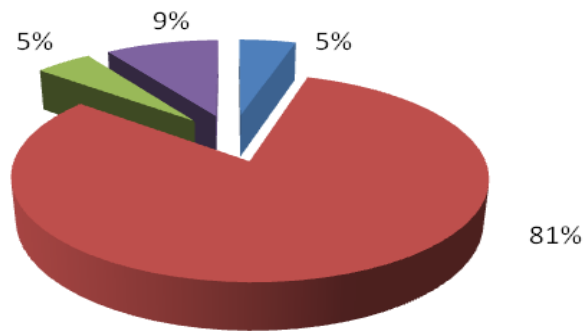


Table 6 Breakdown of Referrals by Category of Harm and Gender Feb 2011 to 6th May 2011- total 34

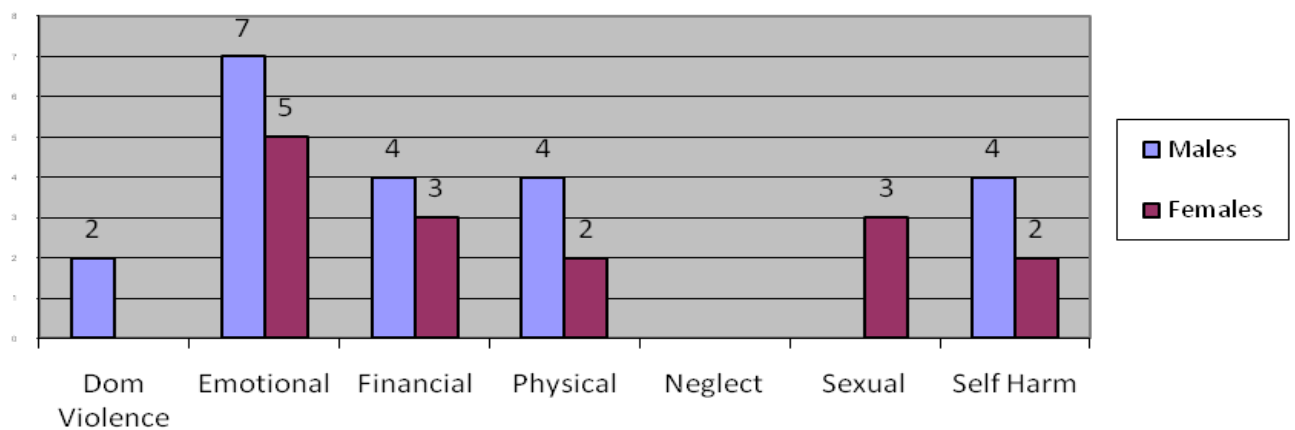


Table 7 Breakdown of referrals by Age Group as a % of total referrals Feb 2011 to 6th May 2011 total - 34

■ 16-20 ■ 21-34 ■ 35-49 ■ 50-64 ■ 65-74 ■ 74-84 ■ 85+

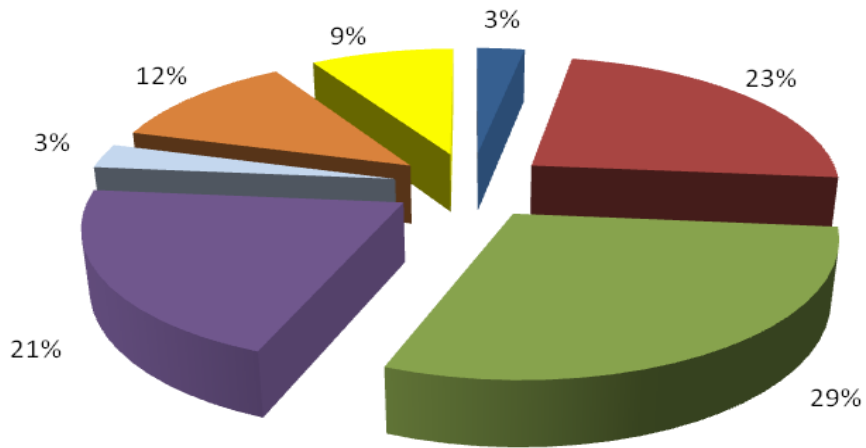


Table 8 Breakdown of referrals by Criteria Group Feb 2011 to 6th May 2011 - total 34

■ Learning Disability ■ Mental Health ■ Mental / Physical Frailty ■ Dementia

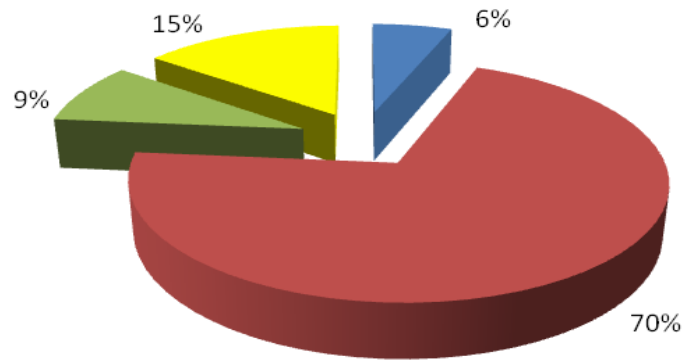


Table 9 Referrals by Age group and Gender Feb 2011 to 6th May 2011 - total 34

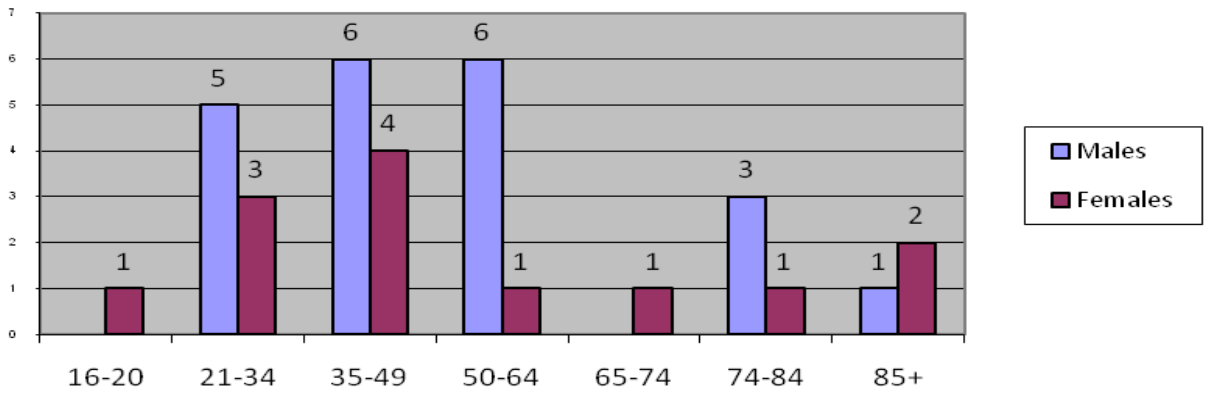
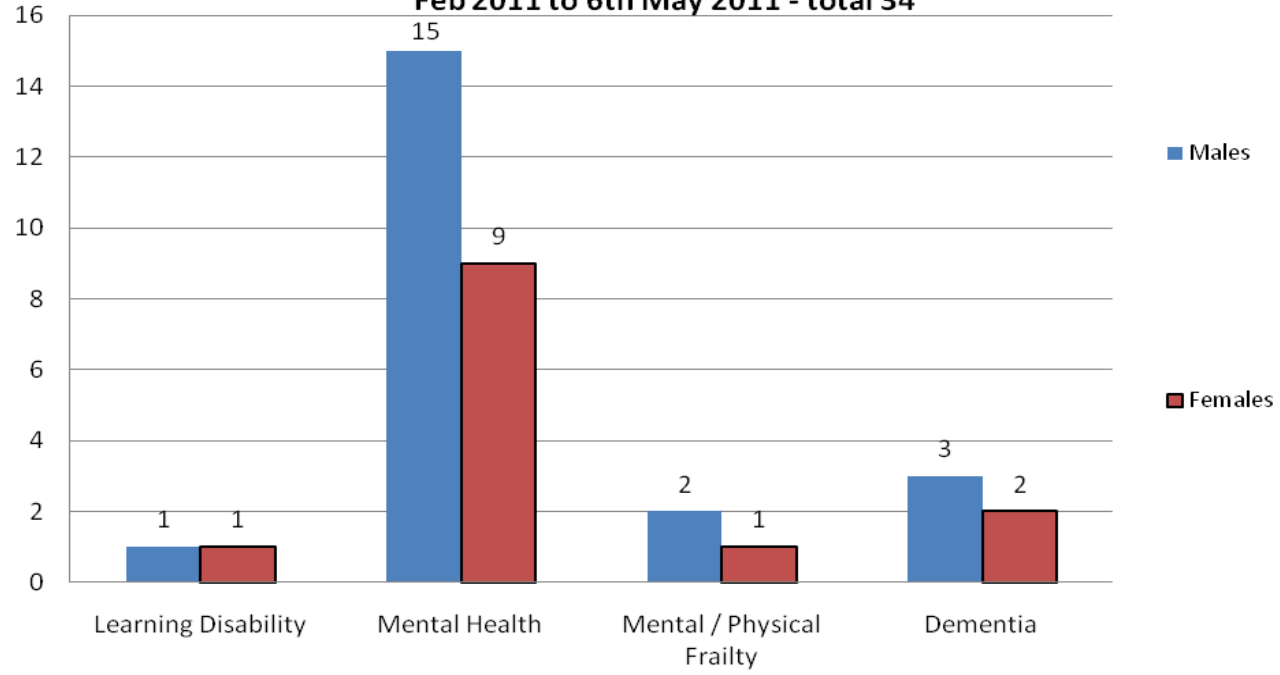
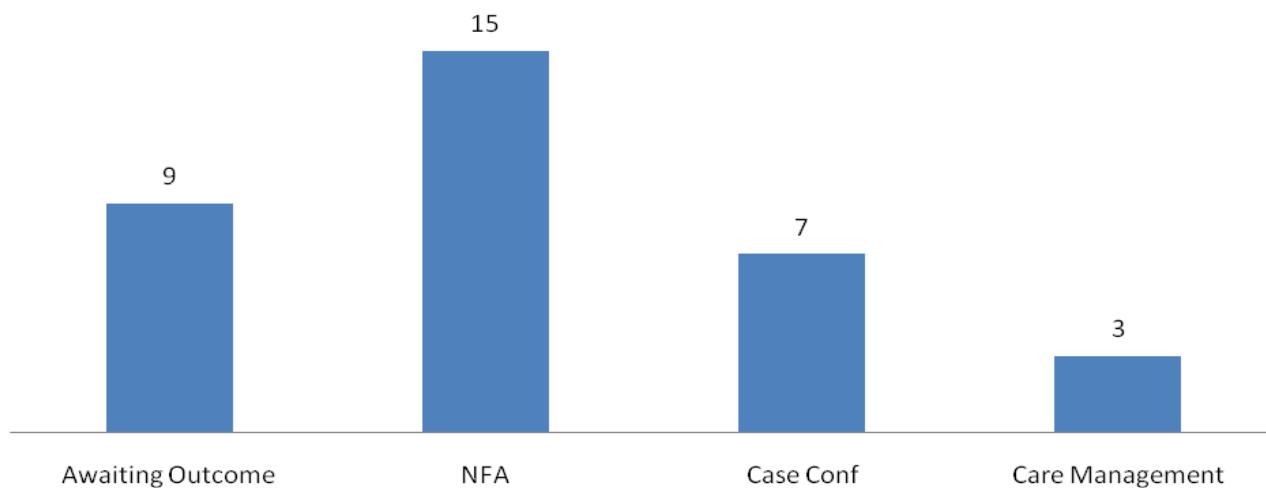


Table 10 Breakdown of referrals by Criteria Group and Gender Feb 2011 to 6th May 2011 - total 34



**Table 11 Breakdown of referrals by Outcome
Feb 2011 to 6th May 2011 - total 34**



** See Note 1. (at end of appendix for No Further Action by Social Work–NFA breakdown)

**Table 12 Breakdown of total quarterly referrals by Age Group and
Category of Harm
- Feb 2011 to 6th May 2011 Total 34**

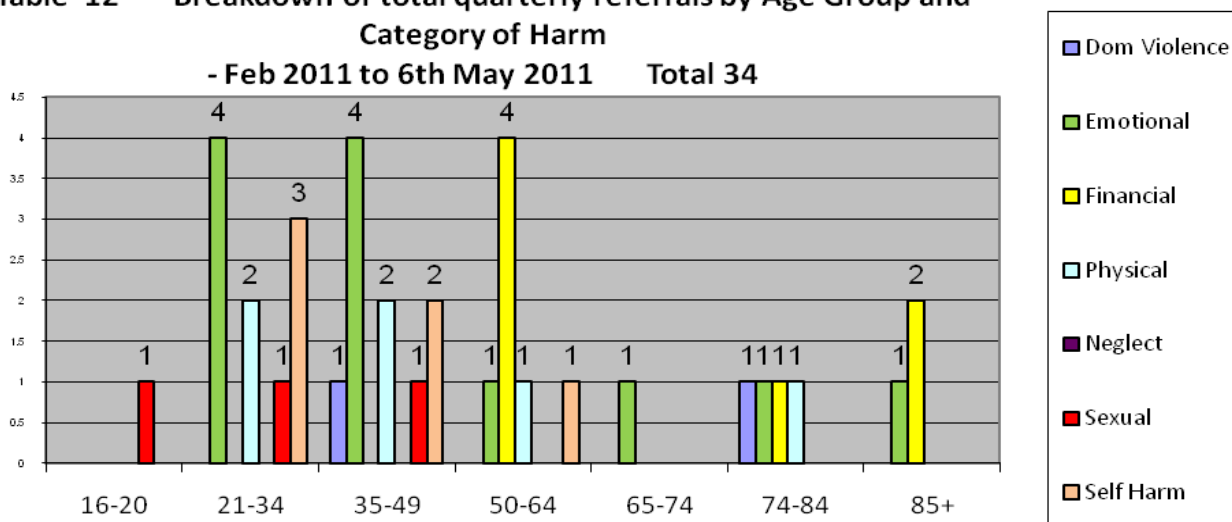
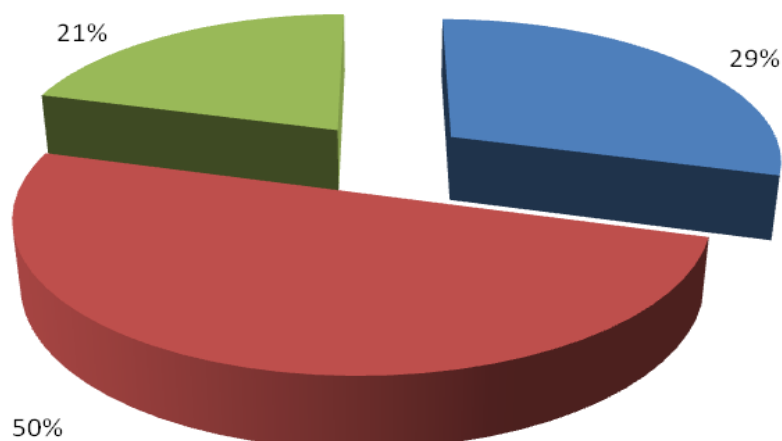


Table 13 Status of Referrals for Feb 2011 to 6th May 2011 Total - 34

■ Known (continuous input) ■ Known (sporadic input) ■ Not Known



** Note 1 Breakdown of reasons for NFA by SW Feb 2011 – 6th May 2011

- Referral A** Following extensive SW preliminary inquiries, NFA by Police, NFA by Social Work, referred to Advocacy .
- Referral B** Following SW preliminary inquiries it was agreed that any risk could be minimised by Care Management.
- Referral C** Following SW preliminary inquiries referred to CMHT
- Referral D** Following SW preliminary inquiries referred to North Ayrshire Council
- Referral E** Following SW preliminary inquiries referred to NHS PCT
- Referral F** Following SW preliminary inquiries no Adult Protection Concerns
- Referral G** Following SW preliminary inquiries no Adult Protection Concerns
- Referral H** Voluntary Hospital Admission. NFA by Social Work.
- Referral I** Following SW preliminary inquiries no Adult Protection Concerns
- Referral J** Following SW preliminary inquiries no Adult Protection Concerns
- Referral K** Following SW preliminary inquiries no Adult Protection Concerns
- Referral L** Following SW preliminary inquiries no Adult Protection Concerns

Referral M Following SW preliminary inquiries no Adult Protection Concerns

Referral N Following SW preliminary inquiries no Adult Protection Concerns

Referral O Following SW preliminary inquiries no Adult Protection Concerns

Referrer

Reason

A Police	Physical
B Police	Self harm
C Police	Financial
D Police	Emotional
E Police	Self Harm
F Social Work	Domestic Violence
G Police	Self harm
H Police	Emotional
I Police	Sexual
J Police	Self Harm
K Police	Emotional
L Police	Physical
M Police	Emotional
N Police	Emotional
O Police	Emotional